

Container Tomato

[TM920-20 - 42 Day Tomato Seeds](#)

42 days.
Solanum



lycopersicum. Open Pollinated. 42 Day Tomato. This early maturing plant produces high yields of 1 oz bright red cherry tomatoes. These cherry tomatoes are very sweet. One of the world's earliest tomatoes. Great in salads, vegetable platters, and on toothpicks as appetizers. The plant does well in both cool and warm climates. They have very few seeds. Suitable for containers. You can be the first in your neighborhood with ripe tomatoes! Suitable for home gardens. A variety from Mexico. Determinate. Disease Resistant: F, N, FCRR, TMV, V.

[TM604-10 - 506 Bush Tomato Seeds](#)

62 days. Solanum lycopersicum. Open Pollinated. 506 Bush Tomato. This early maturing plant produces good yields of 4 to 5 oz bright red tomatoes. They are mildly sweet but very flavorful. Perfect for salads, slicing, and sandwiches. They are also blemish free. Drought Tolerant. Suitable for containers, patios, or small gardens where space is very limited! An excellent choice for home gardens. Determinate.



TM477-10 - Amelia Tomato

75 days.
Solanum



TM951-10 - Atlas Tomato Seeds

85 days. Solanum lycopersicum. (F1) Atlas Tomato. The bush plant produces high yields of 1 lb beefsteak tomatoes. These beautiful orange tomatoes grow in clusters. The first ever beefsteak tomato plant for porches and decks. They are very sweet, juicy, flavorful, and balance of sweetness and acidity. Excellent for salads, sandwiches, and cooking. An excellent choice for home gardens. Semi-Determinate.



lycopersicum. (F1) The plant produces heavy yields of large 8 to 12 oz red tomatoes. They are very flavorful, firm, and uniform in shape. Perfect for sandwiches, salads, and slicing. It produces a lot of tomatoes, from 20 to 30 pounds per plant. Crack-Resistant. Does well in the Southeast region of the USA. Suitable for containers. An excellent choice for home gardens, market growers, and open field production. Disease Resistant: V, FFF, N, St, TSWV. Determinate.

TM283-20 - Better Bush Tomato Seeds

68 day.
Solanum



TM843-10 - Big League Tomato Seeds

47 days. Solanum lycopersicum. (F1) Big League Tomato. This early maturing plant produces good yields of 14 to 21 oz red beefsteak tomatoes. They are very flavorful. Perfect for sandwiches, salads, and slicing. The plants will need support because of the weight of the tomatoes. Suitable for large containers and patio gardening. Also great for greenhouse production. An excellent choice for home gardens. Determinate.



lycopersicum. (F1) Better Bush Tomato. This early maturing bush type plant produces good yields of 8 oz red tomatoes. They are very sweet and meaty. It has a rich old fashioned tomato flavor. Perfect for sandwiches, salads, and slicing. This variety has a strong central stem capable of supporting 48" height with very little need for staking. One of the finest bush varieties on the market. Suitable for large containers or small gardens. Also a favorite choice for growing on patios, decks, and balconies. An excellent choice for home gardens and market growers. Disease Resistant: V, F, N. Determinate.

[TM14-20 - Black Krim Tomato Seeds](#)

80 days.
Solanum



lycopersicum. Open Pollinated. Black Krim Tomato. The plant produces high yields of 10 to 16 oz dark mahogany, blackish-red beefsteak tomatoes. It has a rich old fashioned tomato flavor. They are very sweet, juicy, and flavorful. Perfect for sandwiches, salads, and slicing. Heat Tolerant. Suitable for containers and patio gardening. An excellent choice for home gardens. An heirloom from the Black Sea region of Russia. Indeterminate.

[TM399-20 - Black Sea Man Tomato](#)



75 days. Solanum lycopersicum. Open Pollinated. This short compact plant produces high yields of 8 to 12 oz tomatoes. It has brown-black skin with pink shoulders. They are is very delicious. Perfect for sandwiches, salads, and slicing. A potato leaf variety. Suitable for container gardening. An excellent choice for home gardens. An heirloom variety from Russia. Determinate.

[TM799-20 - Blanche du Quebec](#) [TM945-10 - Bobcat Tomato Seeds](#)

[Tomato](#)

75 days.
Solanum



68 days. *Solanum lycopersicum*. (F1) Bobcat Tomato. This early maturing plant produces high yields of 10 oz shiny red tomatoes. Great tomato flavor with the right balance of sugars and acids. They have smooth skin and are very sweet, meaty, and juicy. Perfect for sandwiches, salads, and slicing. It is a sister of the Better Bush Tomato. The plant has dense foliage that provides excellent protection to the fruit. Suitable for large patio containers. An excellent choice for home gardens, farmer's markets, market growers, open production, and commercial production. Disease Resistant: F, FF, V, St, TMV. Determinate.



lycopersicum. Open Pollinated. This short compact plant produces good yields of 1 to 4 oz pale yellow tomato. Perfect for salads and garnishes. Excellent choice for home gardens. Suitable for container gardening. Cold Tolerant. An heirloom variety from the province of Quebec, Canada. Determinate.

[TM309-10 - Bush Champion II](#) [TM582-10 - Bush Early Girl II Tomato Seeds](#)

[Tomato Seeds](#)

65 days.
Solanum



54 days. *Solanum lycopersicum*. (F1) Bush Early Girl II Tomato. This early maturing bush plant produces huge yields of 6 to 7 oz red tomatoes. They are firm, meaty, very flavorful, and larger than its sister Early Girl. Perfect for salsa, salads, and cooking. Perfect for container gardening, patios, or small gardens where space is very limited. They are amazingly compact and self supporting, Plant produce heavy yields averaging 100 tomatoes or more from each plant. An excellent choice for home gardens. Disease Resistant: VFFN, TMV. Determinate.



lycopersicum. (F1) Bush Champion II Tomato. This early maturing bush plant produces good yields of 8 to 12 oz red tomatoes. They are very meaty and flavorful. Perfect for sandwiches, salads, and slicing. Grows in almost any type of climate. One of the best varieties for small space gardens and containers. An excellent choice for home gardens. This variety was bred to honor the 100th Anniversary of the Ball Seed Company. Disease Resistant: VFFASt. Determinate.

[TM948-10 - BushSteak Tomato Seeds](#) [TM433-20 - Caribe Tomato Seeds](#)

65 days.
Solanum



85 days. Solanum lycopersicum. Open Pollinated. Caribe Tomato. The plant produces good yields of 8 oz red tomatoes. Perfect for sandwiches, salads, and slicing. Does well in humid regions. Good shipping variety. Suitable for container gardening. An excellent choice for home gardens and market growers. Disease Resistant: V, FF, A. Determinate.



lycopersicum. (F1) BushSteak Tomato. This early maturing compact plant produces high yields of 12 oz beefsteak tomatoes. They are very sweet and flavorful. Perfect fresh eating right off the vine or in salads. Suitable for containers, patios, and small gardens. An excellent choice for home gardens. Determinate.

[TM751-20 - Celebration Tomato Seeds](#)

72 days.
Solanum



[TM919-20 - Containers Choice Red Tomato](#)

70 days. Solanum lycopersicum. (F1) This early maturing plant produces excellent yields of 8 oz red beefsteak tomatoes. It ripens to a bright red when mature. This wonderful space-saving container variety has unique wrinkled leaves. Suitable for containers and small gardens. An excellent choice for home gardens. Determinate. Disease Resistant: V, FF.



lycopersicum. (F1) Celebration Tomato. This early maturing plant produces heavy yields of attractive 8 oz deep red tomatoes. It is very flavorful and performed better than the Celebrity Tomato in test trials, Perfect for sandwiches, salads, and slicing. This high quality tomato is used for commercial production and is sure to become the home garden favorite. Suitable for container gardening. Crack Resistant. Plants are well adaptable to most areas. Drought Tolerant. An excellent choice for home gardens and market growers. Determinate.

TM305-20 - Cream Sausage Tomato

76 days.
Solanum lycopersicum.
Open Pollinated.
This bush type plant produces high yields of 2 to 3 oz creamy white to light yellow sausage-shaped tomatoes. They are very sweet. Perfect for salads, garnishes, or for making salsa, or yellow tomato paste and sauce. Grows in clusters of 6. Suitable for container gardening. The plant produces up to 60 pounds of fruit per plant, so to maximize yield potential, either stake or use cages. An excellent choice for home gardens. A variety from the USA. Determinate



TM590-20 - Early Wonder Tomato

54 days. Solanum lycopersicum. Open Pollinated. This early maturing plant produces high yields of 6 oz dark pink tomatoes. It has a rich old-fashioned tomato flavor. Perfect for sandwiches, salads, and slicing. Suitable for container gardening. An excellent choice for home gardens. An heirloom was developed by Burgess Seed in 1950. United States Department of Agriculture, PI 303729. Determinate.



TM896-10 - Fantastico Tomato

2014 All-America



TM769-10 - Fresh Salsa Tomato Seeds

65 days. Solanum lycopersicum. (F1) Fresh Salsa Tomato. This early maturing plant produces high yields of 4 to 5 oz red tomatoes. You can chop this tomato into tiny cubes that remain firm and solid in salsa recipes. Also, it is great for making light Italian sauces. Suitable for container gardening. Excellent choice for home gardens. Disease Resistant: V, FF, N. Determinate.



Selections Winner!

60 days. Solanum lycopersicum. (F1)
This early maturing plant produces heavy yields of ½ to 1 oz bright red grape tomatoes. They are super sweet and very flavorful. Grows in clusters. Produces heavy yields up to 12 pounds per plant. The first grape tomato plant was bred specially for patios! Suitable for hanging baskets, patio tomato, containers, small gardens, and hydroponics gardening. Good shelf life. An excellent choice for home gardens. Disease Resistant: LB. Determinate.

TM348-20 - Glacier Tomato

55 days.
Solanum



TM806-20 - Gold Dust Tomato

62 days. Solanum lycopersicum. Open Pollinated. This early maturing plant produces good yields of 8 oz deep orange tomatoes. Perfect for sandwiches, salads, slicing, and gourmet dishes. Suitable for container gardening. Crack-Resistant. Excellent choice for home gardens, market growers, and open field production. A variety developed at the University of New Hampshire, USA. United States Department of Agriculture, PI 564170. Disease Resistant: V. Determinate.



lycopersicum. Open Pollinated. This early maturing plant produces heavy yields of 2 to 3 oz red tomatoes. They are very sweet, juicy, and flavorful. Perfect for salads and snacks. Great tomato for the short growing season, cool nights, or cooler areas as it will set tomatoes at cooler temperatures It continues to bear the entire season. Cold-Tolerant. A potato leaf variety. Suitable for container gardening. An excellent choice for home gardens. A variety from Sweden. Determinate.

**TM346-20 - Gold Nugget
Tomato**

56 days.
Solanum



lycopersicum. Open Pollinated. This early maturing bush-type plant produces heavy yields of 1 oz golden yellow cherry tomatoes. They are very flavorful. Perfect for salads and garnishes. The plant is usually the first to bear tomatoes and produces an abundant crop all season long. Winner of the prestigious British Horticultural Society (RHS) Award of Garden Merit. Suitable for container gardening. Grows in clusters. Crack-Resistant. An excellent choice for home gardens and market growers. A variety was developed by Dr. Jim Baggett at the Oregon State University, USA. United States Department of Agriculture, PI 645429. Diseases Resistant: V. Determinate.

TM54-20 - Goliath Bush Tomato Seeds

68 days. Solanum lycopersicum. (F1) Goliath Bush Tomato. This early maturing bush plant produces high yields of 6 to 8 oz red tomatoes. They are very sweet and flavorful. Perfect for sandwiches, salads, and slicing. One of the best patio tomatoes around. Also great for containers and small gardens. If grown in containers, it can be brought indoors over winter to enjoy tomatoes all year. The plant is very productive averaging more than 100 tomatoes from each plant. An excellent choice for home gardens. Disease Resistant: VFN. Determinate.



TM506-10 - Granddaddy Tomato Seeds

72 days.
Solanum



lycopersicum. (F1) Granddaddy Tomato. This early maturing plant produces good yields of 10 to 16 oz brilliant red tomatoes. They are very sweet, meaty, juicy, and flavorful. Perfect for sandwiches, hamburgers, salads, and slicing. These blue ribbon prize winning tomatoes will be the topic of conversation when guests sit down to eat. One of the best quality giant beefsteak tomatoes available anywhere! Suitable for container gardening. An excellent choice for home gardens. Disease Resistant: V, F. Determinate.

TM469-20 - Grushovka Tomato

65 days. Solanum lycopersicum. Open Pollinated. The plant produces high yields of 6 oz pinkish-red egg-shaped tomatoes. They are very delicious. Perfect for canning and gourmet dishes. Suitable for container gardening. Excellent choice for home gardens. A variety from Siberia, Russia. United States Department of Agriculture, G 33017. Determinate.



TM853-10 - Homeslice Tomato **TM65-20 - Husky Cherry Red Tomato**

63 days.
Solanum



lycopersicum. (F1) This early maturing plant produces high yields of 5 to 6 oz bright red tomatoes. It has a rich old-fashioned tomato flavor. Perfect for sandwiches, salads, and slicing. Suitable for patios, containers, and small gardens. An excellent choice for home gardens. Disease Resistant: V, F. Determinate.

65 days. Solanum lycopersicum. (F1) This early maturing plant produces heavy yields of 1/2 to 3/4 oz red cherry tomatoes. They are very sweet and flavorful. Perfect for salads and snacks. Grows in clusters. This variety requires no pruning. To maximize yield potential, either stake or use cages. Perfect for container gardening, patio, or small gardens where space is very limited but is not recommend for a hydroponic growing system. An excellent choice for home gardens. Disease Resistant: V, F, A. Indeterminate.



TM68-10 - Husky Red Tomato

67 days.
Solanum

TM526-10 - Incas Tomato Seeds

70 days. Solanum lycopersicum. (F1) Incas Tomato. This early maturing plant produces good yields of 3 oz bright red Roma tomatoes. It has firm, thick, and meaty flesh. Perfect for making pastes, purees, sauces, or canning. An early San Marzano-type variety ripening as early as late June. Excellent shelf life. Suitable for container gardening. Excellent choice for home gardens. A variety from the USA. Disease Resistant: V, FF. Determinate.



lycopersicum. (F1) This early maturing plant produces good yields of 5 to 7 oz red tomatoes. They are very sweet and flavorful. Perfect for sandwiches, salads, and slicing. This variety requires no pruning! Perfect for container gardening, patios, or small gardens where space is very limited! An excellent choice for home gardens. Disease Resistant: V, FF, A, St. Indeterminate.

TM616-10 - Kewalo Tomato Seeds

78 days.



Solanum lycopersicum. Open Pollinated. Kewalo Tomato. The plant produces high yields of 6 to 8 oz red tomatoes. Perfect for sandwiches, salads, and slicing. This variety is suitable for tropical and sub-tropical regions, like Hawaii, where the disease is a serious problem. While it is well suited for the tropics, it is also well adapted to areas with high humidity and high temperatures. It is the only open-pollinated variety that has these disease-resistance characteristics for tropic regions. Perfect for container gardening, patios, or small gardens where space is very limited! An excellent choice for home gardens and market growers. This variety was developed by Dr. Jim Gilbert at the University of Hawaii, USA. Disease Resistant: N, BW, ToMV. Determinate.

TM717-20 - Lime Green Salad Tomato Seeds

58 days. *Solanum lycopersicum*. Open Pollinated. Lime Green Salad Tomato. This early maturing plant produces good yields of 3 to 5 oz lime green tomatoes that ripen to an amber color. They have a spicy, juicy, and tangy flavor. Perfect for sandwiches, salads, salsas, and slicing. Also known as Green Elf Tomato. Suitable for container gardening. Excellent choice for home gardens. A variety was developed by Tom Wagner of Washington, USA. Determinate.



TM930-10 - Little Birdy Red Robin Tomato Seeds

55 days.
Solanum



TM838-20 - Little Napoli Tomato

63 days. Solanum lycopersicum. (F1) This early maturing plant produces high yields of 2 oz bright red pear-shaped tomatoes. It has a rich tomato flavor. They are very sweet, meaty, and juicy. Perfect for canning, and making rich tomato sauce, salsa, soup, or ketchup. Perfect for container gardening, patios, hanging baskets, or small gardens where space is very limited! Excellent choice for home gardens. Disease Resistant: V, F. Determinate.



lycopersicum. Open Pollinated. Little Birdy Red Robin Tomato. This early maturing plant produces good yields of 1 to 1 ¼ oz red cherry tomatoes. They are very sweet and flavorful. Perfect for salads and snacks. A potato leaf variety. This compact plant is suitable for containers, patios, window boxes, and hanging baskets. An excellent choice for home gardens. Determinate.

TM885-10 - Lizzano Tomato Seeds

2011 All-America



TM440-20 - Manitoba Tomato Seeds

58 days. Solanum lycopersicum. Open Pollinated. Manitoba Tomato. This early maturing plant produces high yields of 6 oz bright red tomatoes. They are meaty with a tangy flavor. Perfect for sandwiches, salads, slicing, and canning. Great for those with short growing seasons! Suitable for Southern Canadian regions and the Northern US regions of Montana, Dakotas, Minnesota, Wisconsin, Michigan, and New England states. Suitable for container gardening or small gardens where space is very limited! An excellent choice for home gardens. A variety was developed by the Experimental Farm in Morden, Manitoba, Canada. United States Department of Agriculture, PI 279815. Disease Resistant: V, F. Determinate.



Selections Winner!

65 days. Solanum lycopersicum. (F1) Lizzano Tomato. This early maturing plant produces high yields of ½ to 1 oz bright red cherry tomatoes. They are very sweet, juicy, and flavorful. Perfect for snacks, dips, and salads. Suitable for container gardening, patios, hanging baskets, or small gardens where space is very limited! Excellent choice for home gardens. Disease Resistant: LB. Semi-Determinate.

TM623-20 - New Big Dwarf Tomato Seeds

60 days.
Solanum



TM92-20 - Northern Delight Tomato

65 days. Solanum lycopersicum. Open Pollinated. This early maturing plant produces high yields of 1 to 2 oz red tomatoes. Perfect for salads and snacks. It was developed to perform in the short season and cooler regions in the Northern States. Cold Tolerant. Suitable for container gardening, patios, or small gardens where space is very limited! Excellent choice for home gardens. A variety was developed by Dr. Boe in 1991 by North Dakota State University, North Dakota, USA. Disease Resistant: V, F. Determinate.



lycopersicum. Open Pollinated. New Big Dwarf Tomato. This early maturing plant produces high yields of 8 to 16 oz deep pink beefsteak tomatoes. They are very sweet, juicy, and flavorful. Perfect for salads, slicing, and sandwiches. The plant stays small while producing large and delicious tomatoes. It is a cross of a Ponderosa and a Dwarf Champion. Suitable for containers, pots, small gardens, and square-foot gardens where space is very limited. An excellent choice for home gardens. An heirloom variety was developed by Isbell's Seed Company back in 1909. United States Department of Agriculture, PI 645154. Determinate.

TM836-10 - Patio Plum Tomato TM103-10 - Patio Tomato Seeds

60 days.
Solanum



70 days. Solanum lycopersicum. (F1) Patio Tomato. This early maturing plant produces excellent yields of 3 to 4 oz red tomatoes. They are very sweet and flavorful. A dwarf tomato that proves good things grows in small spaces. It is one of America's most popular varieties ever for growing on patios, decks, courtyards, or wherever garden space is limited. Great for school projects. Kids love them! Because of the weight of the abundance of tomatoes the plant produces, it requires 2 ft support, either staking or cages. Always a great seller at Farmer's Markets! An excellent choice for home gardens and market growers. Disease Resistant: F, A, St. Determinate.



lycopersicum. Open Pollinated. This early maturing plant produces high yields of red grape tomatoes. They have excellent flavor and are perfect for snacking or salads. Grows in clusters of 3 to 5. Suitable for container gardening and patios. An excellent choice for home gardens. Determinate.

TM572-10 - Red Alert Tomato

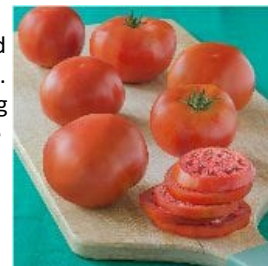
55 days.
Solanum



lycopersicum. Open Pollinated. Early maturing plant produces high yields of 2 to 3 oz red cherry tomatoes. They are very sweet, juicy, and flavorful. Perfect for salads and snacks. Plant is very productive, as you can expect 4 to 5 lbs of tomatoes per plant! Suitable for patio, containers, and greenhouse. Excellent choice for home gardens. Determinate.

TM892-20 - Red Pride Tomato

78 days. Solanum lycopersicum. (F1) Plant produces high yields of 10 to 14 oz red tomatoes. They are sweet and flavorful. It has a rich old-fashioned tomato flavor. Perfect for salads, slicing, and sandwiches. The plant has good foliage protecting tomatoes from sun-scald. Suitable for containers, patios, or small gardens where space is very limited! Does well in the Northeast parts of the country. Excellent choice for home gardens and market growers. Disease Resistant: V, FF, A, St. Determinate.



TM114-20 - Red Robin Tomato Seeds

55 days.
Solanum



lycopersicum. Open Pollinated. Red Robin Tomato. This early maturing plant produces good yields of 1 to 1 3/4 oz red cherry tomatoes. They are very sweet and flavorful. Perfect for salads and snacks. The plant has good foliage protecting tomatoes from sun-scald. A potato leaf variety. Suitable for containers, patios, and hanging baskets. An excellent choice for home gardens. Determinate.

TM946-10 - Ruby Crush Tomato Seeds

65 days. Solanum lycopersicum. (F1) Ruby Crush Tomato. This early maturing strong compact plant produces high yields of 1 1/4 wide by 1 1/2 long bright red grape tomatoes. They are very sweet and flavorful. Perfect fresh eating right off the vine or in salads. They hold well on the plant. The plant has good foliage protecting tomatoes from sunscald. They are very easy to pick. No pruning is required. The plant requires minimal support. Crack Resistant. Suitable for containers and small gardens. An excellent choice for home gardens. Disease Resistant: F, FF, FCRR, ToMV. Determinate.



TM840-10 - Rugged Boy Tomato

75 days.
Solanum



lycopersicum. (F1) The plant produces high yields of 6 to 8 oz red tomatoes. They are very sweet, meaty, juicy, with exceptional flavor. Perfect for salads, slicing, burgers, and sandwiches. Suitable for containers, patios, or small gardens where space is very limited! One of the most disease-resistant tomato varieties. An excellent choice for home gardens, farmer's markets, and market growers. Disease Resistant: V, FF, N, St, LB, TMV. Determinate.

TM522-10 - Shady Lady Tomato Seeds

80 days. Solanum lycopersicum. (F1) Shady Lady Tomato. The plant produces high yields of 6 to 10 oz deep red tomatoes. It is one of the sweetest and most delicious full-flavored tomatoes. Perfect for salads, slicing, and sandwiches. This is the number one producer and a favorite at the farmer's marketplace and is one of the most widely grown fresh market tomatoes in California. It has sturdy vines and heavy foliage that provide good protection against sunburn. Suitable for containers, patios, or small gardens where space is very limited! Good quality tomato used for commercial production with excellent transportation ability and extended keeping characteristics. An excellent choice for home gardens, farmer's markets, market growers, and open field production. Disease Resistant: V, F, A, St, TMV. Determinate.



TM221-10 - Sophie's Choice Tomato

54 days.
Solanum



lycopersicum. Open Pollinated. This early maturing plant produces good yields of 8 to 10 oz orange-red tomatoes. They are sweet and flavorful. Perfect for salads, slicing, and sandwiches. Suitable for container gardening, patios, hanging baskets, or small gardens where space is very limited! Does well in cold temperatures. Cold Tolerant. An excellent choice for home gardens. An heirloom variety from Edmonton, Canada. Determinate.

TM461-20 - Sprite Tomato

60 days. Solanum lycopersicum. Open Pollinated. This early maturing plant produces high yields of ½ to ¾ oz red grape tomatoes. They are sweet, juicy, and very flavorful with thin skin. Perfect for salads and snacks. Suitable for containers, patios, or small gardens where space is very limited! An excellent choice for home gardens. Determinate.



TM388-10 - Sugary Tomato Seeds

2005 All-America



TM849-20 - Summer Pick Tomato

75 days. Solanum lycopersicum. (F1) The plant produces high yields of 11 oz red beefsteak tomatoes. They are very flavorful. Perfect for salads, slicing, burgers, and sandwiches. Suitable for containers, patios, or small gardens where space is very limited! An excellent choice for home gardens. Disease Resistant: V, FFF, St, TSWV. Determinate.



Selections Winner!

60 days. Solanum lycopersicum. (F1) Sugary Tomato. This early maturing plant produces heavy yields of 1 to 2 oz glossy reddish pink Grape tomatoes. They are very sweet and flavorful. Perfect for salads and snacks. Grows in clusters of 15 to 20, like grapes. Crack Resistant. Suitable for containers, patios, or small gardens where space is very limited! An excellent choice for home gardens. A variety from the USA. Semi-Determinate.

TM253-10 - Super Bush Tomato

70 days.
Solanum



TM819-10 - Supremo Tomato Seeds

68 days. Solanum lycopersicum. (F1) Supremo Tomato. This early maturing plant produces high yields of 5 to 6 oz bright red Roma tomatoes. They have thick walls, are meaty, and are very flavorful. Perfect for salads, salsas, making sauce, puree, paste, and canning. It has a long shelf life. Heat Tolerant. Suitable for containers, patios, or small gardens where space is very limited. An excellent choice for home gardens and market growers. Disease Resistant: V, FFF, N, BS, TSWV. Determinate.



lycopersicum. (F1) This early maturing plant produces high yields of 5 to 6 oz red tomatoes. They are sweet and flavorful. Perfect for salads, slicing, and sandwiches. The plant has good foliage protecting tomatoes from sun-scald. Suitable for containers, patios, or small gardens where space is very limited! An excellent choice for home gardens. Disease Resistant: V, F, N. Determinate.

[TM664-20 - Sweet Pea Currant Tomato Seeds](#) [TM947-10 - Sweetheart of the Patio Tomato Seeds](#)

75 days.
Solanum

68 days. Solanum lycopersicum. (F1) Sweetheart of the Patio Tomato. This early maturing strong compact plant produces high yields of 1" wide by 1" long bright red Grape tomatoes. They are very sweet and flavorful. Perfect fresh eating right off the vine or in salads. They are very easy to pick. Suitable for containers and small gardens. An excellent choice for home gardens and patio. Disease Resistant: LB. Determinate.



pimpinellifolium. Open Pollinated. Sweet Pea Currant Tomato. The plant produces high yields of tiny ¼ oz red cherry tomatoes. They are very sweet and very flavorful. It has a rich full tomato flavor. Perfect for salads, garnishes, or culinary creations. Grows of clusters of 10 to 12. The plant produces thousands of tiny cherry tomatoes. The best red currant tomato. Suitable for container gardening, patios, hanging baskets, or small gardens where space is very limited! An excellent choice for home gardens. Indeterminate.

[TM452-20 - Taxi Tomato Seeds](#) [TM599-20 - Thai Pink Pear Tomato](#)

65 days.
Solanum



75 days. Solanum lycopersicum. Open Pollinated. The plant produces high yields of pink pear-shaped tomatoes. They are mildly sweet and flavorful. Perfect for salads, garnishes, or culinary creations. It is similar to the Thai Pink Egg tomato, but a shorter plant. It has an extended shelf life and stores well. Suitable for containers, patios, or small gardens where space is very limited! Excellent choice for home gardens. An heirloom variety from Thailand. Determinate.



lycopersicum. Open Pollinated. Taxi Tomato. This early maturing plant produces heavy yields of 4 to 6 oz bright yellow tomatoes. They are mild, meaty, juicy, and flavorful. Perfect for salads, slicing, sandwiches, salsas, garnishes, or culinary creations. One of the best yellow tomatoes for short-season regions. Low acidity variety. Does well in hot and humid regions. Heat Tolerant. High Humidity Tolerant. Suitable for containers, patios, or small gardens where space is very limited! Excellent choice for home gardens. Determinate.

[TM846-10 - Tidy Treats Tomato](#) **[TM266-10 - Tiny Tim Tomato Seeds](#)**
[Seeds](#)

55 days.
Solanum



45 days. Solanum lycopersicum. Open Pollinated. Tiny Tim Tomato. This early maturing plant produces heavy yields of bright red cherry tomatoes. They are very sweet and flavorful. Perfect fresh eating right off the vine or in salads. The dwarf plant is suitable for container gardening, patios, hanging baskets, window sill gardens, or small gardens where space is very limited. An excellent choice for home gardens. An heirloom variety was developed in 1945 by the University of New Hampshire, USA. United States Department of Agriculture, PI 303797. Determinate.



lycopersicum. (F1) Tidy Treats Tomato. This early producing plant produces high yields of ¾ to 1 oz bright red cherry tomatoes. Perfect fresh eating right off the vine or in salads. Grows in clusters. Suitable for containers, patios, or small gardens where space is very limited. Excellent choice for home gardens. Disease Resistant: V, F. Determinate.

[TM416-10 - Tomatoberry Tomato](#)

60 days.
Solanum



[TM955-10 - Topsy Tom Tomato Seeds](#)

55 days. Solanum lycopersicum. Open Pollinated. Topsy Tom Tomato. This early maturing compact plant produces high yields of large 1" round Cherry tomatoes. It was bred especially for upside down container growing. The tomatoes are very sweet and flavorful. Excellent for salads and fresh eating right off the plant. Also, great sautéed and served over pasta. The plant holds an abundant amount of tomatoes, and the branches are wind tolerant and won't break in wind. Cold Tolerant. An excellent choice for home gardens. A variety from the USA. Semi-Determinate.



lycopersicum. (F1) This early maturing plant produces high yields of 1 to 2 oz bright red strawberry-shaped tomatoes. They are firm, meaty, and very flavorful. These are perfect for salads, garnishes, or culinary creations. It won the third place innovation award at the Fruit Logistica Show in Berlin in 2008. Also won a major taste trial. Grows in clusters of 25 to 30. Crack Resistant. It has an extended shelf life and stores well. Suitable for container gardening, greenhouse, and open field production. Always a great seller at Farmer's Markets! An excellent choice for home gardens, greenhouses, market growers, and open field production. A variety developed in Japan. Disease Resistant: F, N, TMV. Indeterminate.

TM448-10 - Totem Tomato Seeds

70 days.
Solanum



TM563-10 - Tumbler Tomato

48 days. Solanum lycopersicum. (F1) This early maturing plant produces heavy yields of 1 oz bright red cherry tomatoes. They are very sweet, juicy, and flavorful. Perfect fresh eating right off the vine or in salads. The plant produces up to 6 lbs. Heat-Tolerant. It was specially bred for hanging baskets. Suitable for container gardening, patios, hanging baskets, and small gardens where space is very limited! An excellent choice for home gardens. Determinate.



lycopersicum. (F1) Totem Tomato. This early maturing plant produces heavy yields of bright red cherry tomatoes. They are very sweet and flavorful. Perfect fresh eating right off the vine or in salads. The dwarf plant is suitable for container gardening, patios, hanging baskets, window sill gardens, or small gardens where space is very limited! An excellent choice for home gardens. Determinate.

TM565-10 - Tumbling Tom Yellow Tomato Seeds

63 days.
Solanum



TM292-20 - Window Box Roma Tomato

70 days. Solanum lycopersicum. (F1) This early maturing plant produces high yields of 2 to 3 oz red pear-shaped tomatoes. They are sweet and flavorful. Perfect for salads and for making sauce and paste. It has an extended shelf life and stores well. Suitable for containers, patios, or small gardens where space is very limited! Excellent choice for home gardens. Disease Resistant: V, F, N. Determinate.



lycopersicum. Open Pollinated. Tumbling Tom Yellow Tomato. This early maturing plant produces high yields of 1 to 2 oz yellow cherry tomatoes. They are very sweet and flavorful. Perfect fresh eating right off the vine or in salads. Produces up to 4 lbs of tomatoes per plant. It is ideal for hanging baskets. Suitable for container gardening, patios, hanging baskets, window boxes, and small gardens where space is very limited. Disease Resistant: V, F, N. Determinate.

TM574-10 - Zebra Cherry
Tomato Seeds

60 days.
Solanum



lycopersicum. (F1) Zebra Cherry Tomato. This early maturing plant produces high yields of 1 oz bicolor dark red tomatoes with green stripes. They are very sweet and flavorful. Perfect fresh eating right off the vine or in salads. Suitable for container gardening, patios, hanging baskets, and small gardens where space is very limited. Excellent choice for home gardens. Disease Resistant: V, FF. Determinate.