

Best Tasting Tomato

[TM920-20 - 42 Day Tomato Seeds](#)

42 days. Solanum lycopersicum. Open Pollinated. 42 Day Tomato. This early maturing plant produces high yields of 1 oz bright red cherry tomatoes. These cherry tomatoes are very sweet. One of the world's earliest tomatoes. Great in salads, vegetable platters, and on toothpicks as appetizers. The plant does well in both cool and warm climates. They have very few seeds. Suitable for containers. You can be the first in your neighborhood with ripe tomatoes! Suitable for home gardens. A variety from Mexico. Determinate. Disease Resistant: F, N, FCRR, TMV, V.



[TM604-10 - 506 Bush Tomato Seeds](#)

62 days. Solanum lycopersicum. Open Pollinated. 506 Bush Tomato. This early maturing plant produces good yields of 4 to 5 oz bright red tomatoes. They are mildly sweet but very flavorful. Perfect for salads, slicing, and sandwiches. They are also blemish free. Drought Tolerant. Suitable for containers, patios, or small gardens where space is very limited! An excellent choice for home gardens. Determinate.



[TM921-20 - Abe Lincoln Tomato](#)

85 days. Solanum lycopersicum. The plant produces high yields of 12 oz bright red tomatoes. The tomatoes are very flavorful with the old-fashioned tomato flavor. It has very few seeds. Excellent slicing tomato. Suitable for home gardens. Developed by H. W. Buckbee in the 1920s. A variety from the USA. Indeterminate.



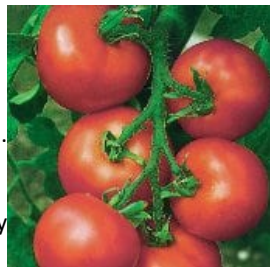
[TM544-20 - Alaskan Fancy Tomato](#)

55 days. Solanum lycopersicum. Open Pollinated. This early maturing plant produces good yields of 2 oz red plum-shaped tomatoes. They are very sweet, juicy, and flavorful. Perfect for salads. One of the earliest plum tomatoes on the market. An excellent variety for the short growing season. An excellent choice for home gardens. An heirloom variety. Determinate.



[TM793-10 - Alicante Tomato](#)

68 days. Solanum lycopersicum. Open Pollinated. This early maturing plant produces high yields of 4 to 6 oz red tomatoes. They are very sweet and flavorful. Perfect for sandwiches, salads, and slicing. Suitable for greenhouse production. Winner of the prestigious Royal Horticultural Society (RHS) Award of Garden Merit. An excellent choice for home gardens. An heirloom variety from the United Kingdom. Indeterminate.



[TM2-20 - Amana Orange Tomato Seeds](#)

90 days. Solanum lycopersicum. Open Pollinated. Amana Orange Tomato. The plant produces good yields of large 1 to 2 lb orange beefsteak tomatoes. They are sweet and flavorful. Perfect for salads, sandwiches, slicing, and culinary creations. Low acidity variety. Excellent choice for home gardens. An heirloom variety from Florida, USA. Indeterminate.



[TM826-20 - Amish Gold Slicer Tomato Seeds](#)

80 days. Solanum lycopersicum. Open Pollinated. Amish Gold Slicer Tomato. The plant produces high yields of 4 to 6 oz orange tomatoes. They are very sweet, firm, and flavorful. Perfect for sandwiches, salads, slicing, and canning. Excellent choice for home gardens. Indeterminate.



[TM794-10 - Apelsin Tomato](#)

80 days. Solanum lycopersicum. Open Pollinated. The plant produces good yields of 6 to 12 oz orange tomatoes. They are sweet and flavorful. Perfect for sandwiches, salads, slicing, and culinary creations. Excellent choice for home gardens. A variety from Russia. Indeterminate.



TM495-10 - Arbason Tomato

76 days. Solanum lycopersicum. (F1) The plant produces high yields of flavorful 7 to 9 oz red beefsteak tomatoes. It is very delicious and juicy. Perfect for sandwiches, salads, and slicing. Crack Resistant. Suitable for greenhouse production. An excellent choice for home gardens, farmer's markets, market growers, greenhouses, open production, and commercial production. Disease Resistant: V, FF, TMV. Indeterminate.



TM5-20 - Arkansas Traveler Tomato

85 days. Solanum lycopersicum. Open Pollinated. The plant produces good yields of 6 to 8 oz deep pink tomatoes. This plant grows well everywhere. It has the rich old-fashioned tomato flavor and is considered to be one of the best-tasting tomatoes around. Perfect for sandwiches, salads, and slicing. Heat Tolerant. High Humidity Tolerant. Crack Resistant. Also known as Arkansas Tomato. An excellent choice for home gardens. An heirloom variety dating back to the late 1800s from the Ozark Mountains of Arkansas, USA. United States Department of Agriculture, PI 645368. Indeterminate.



TM951-10 - Atlas Tomato Seeds

85 days. Solanum lycopersicum. (F1) Atlas Tomato. The bush plant produces high yields of 1 lb beefsteak tomatoes. These beautiful orange tomatoes grow in clusters. The first ever beefsteak tomato plant for porches and decks. They are very sweet, juicy, flavorful, and balance of sweetness and acidity. Excellent for salads, sandwiches, and cooking. An excellent choice for home gardens. Semi-Determinate.



TM723-20 - Aunt Gertie's Gold Tomato

75 days. Solanum lycopersicum. Open Pollinated. The plant produces good yields of 1 lb golden-yellow tomatoes. They are delicious with a wonderfully fruity and sweet flavor. This is not only one of the best-tasting yellow tomatoes, but it is one of the best-tasting tomatoes of any color. This is a potato leaf variety. Perfect for salads and sandwiches. Excellent choice for home gardens. An heirloom variety from Virginia, USA. Indeterminate.



TM323-20 - Aunt Ginny's Purple Tomato Seeds

85 days. Solanum lycopersicum. Open Pollinated. Aunt Ginny's Purple Tomato. The plant produces high yields of 12 to 16 oz deep pink beefsteak tomatoes. They are equal to or better than the Brandywine Tomato. It has a rich tomato flavor and is very juicy. Perfect for sandwiches, salads, and slicing. Mostly smooth in shape and very little cracking. This is a potato leaf plant variety. Excellent choice for home gardens. An heirloom variety from Germany. Indeterminate.



TM6-20 - Aunt Ruby's German Green Tomato

85 days. Solanum lycopersicum. Open Pollinated. The plant produces good yields of 12 to 16 oz neon green beefsteak tomatoes. They are very sweet and flavorful. It has a rich old-fashioned tomato flavor. Perfect for sandwiches, salads, slicing, tomato juice, culinary creations, and sauces. Try making green spaghetti sauce! This is the only green beefsteak tomato on the market. Grows in clusters of 2 to 3. A winner of the 2003 Heirloom Garden Show's taste test. An excellent choice for home gardens. It is originally from Germany, brought over by Ruby Arnold's immigrant grandfather. An heirloom variety from Germany. Indeterminate.



TM925-10 - Austin's Red Pear Tomato

80 days. Solanum lycopersicum. The plant produces high yields of large 2" long red pear-shaped tomatoes. These beautiful tomatoes turn red when mature and are very delicious. Great used fresh or in salads. Suitable for home gardens and market growers. An heirloom variety from the Dale Austin family of Washington, USA. Indeterminate. Disease Resistant.



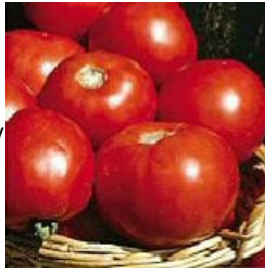
TM335-20 - Azoychka Tomato Seeds

68 days. Solanum lycopersicum. Open Pollinated. Azoychka Tomato. This early maturing plant produces high yields of 10 to 16 oz yellow-orange beefsteak tomatoes. These lemon yellow tomatoes are very sweet and flavorful with a hint of citrus. Perfect for making sauces, sandwiches, salads, slicing, canning, and gourmet dishes. Very productive produces 40 to 50 tomatoes per plant. Excellent choice for home gardens. An heirloom variety from Moscow, Russia. Indeterminate.



TM350-10 - Basket Vee Tomato

70 days. Solanum lycopersicum. Open Pollinated. This early maturing bush-type plant produces high yields of 8 to 9 oz red tomatoes. They have thick flesh and are very flavorful. Perfect for sandwiches, salads, and slicing. Crack-Resistant. An excellent choice for home gardens and market growers. A variety developed in Canada. Disease Resistant: V, F. Determinate.



TM468-20 - Beauty Tomato Seeds

75 days. Solanum lycopersicum. Open Pollinated. Beauty Tomato. The plant produces high yields of 12 to 16 oz red beefsteak tomatoes. It has the old-fashioned tomato flavor and it has a beautiful tomato appearance. Perfect for sandwiches, salads, and slicing. Excellent choice for home gardens. United States Department of Agriculture, PI 451993. Indeterminate.



TM478-10 - Bella Rosa Tomato

75 days. Solanum lycopersicum. (F1) The plant produces high yields of 9 to 12 oz bright red tomatoes. They are round, firm, and highly flavorful. It has a good balance of acid and sugar. Perfect for sandwiches, salads, and slicing. A heat-tolerant variety that does well in Florida. One of the most disease-resistant tomato varieties. An excellent choice for home gardens and market growers. Disease Resistant: V, FF, N, A, St, TSWV. Determinate.



TM10-20 - Better Boy Tomato Seeds

75 days. Solanum lycopersicum. (F1) Better Boy Tomato. The plant produces extremely heavy yields of 10 to 16 oz bright red tomatoes. It has a rich old fashioned tomato flavor. It is very meaty, juicy, and flavorful with just the right balance of acid and sugar. It is one of the most popular tomatoes grown in the United States and one of the all time best sellers. One of the most disease resistant tomato varieties. Home gardeners have voted Better Boy Tomato as one of the Best Tomatoes to Grow. It is a Guinness World Record holder for the highest-yielding tomato, producing 342 lbs of tomatoes from one plant. The plant continues to produce all season long. Perfect for slicing, freezing, canning, and sauces. Good foliage protection prevents sun scaling. The plant requires support, either staking or cages. An excellent choice for home gardens and market growers. Disease Resistant: V, F, N, A, St, LB. Indeterminate.



[TM283-20 - Better Bush Tomato Seeds](#)

68 day. Solanum lycopersicum. (F1) Better Bush Tomato. This early maturing bush type plant produces good yields of 8 oz red tomatoes. They are very sweet and meaty. It has a rich old fashioned tomato flavor. Perfect for sandwiches, salads, and slicing. This variety has a strong central stem capable of supporting 48" height with very little need for staking. One of the finest bush varieties on the market. Suitable for large containers or small gardens. Also a favorite choice for growing on patios, decks, and balconies. An excellent choice for home gardens and market growers. Disease Resistant: V, F, N. Determinate.



[TM602-10 - BHN 589 Tomato Seeds](#)

75 days. Solanum lycopersicum. (F1) BHN 589 Tomato. The plant produces high yields of 8 to 10 oz red tomatoes. This is the first BHN variety bred especially for great flavor with a real tomato taste. Perfect for sandwiches, salads, and slicing. Crack Resistant. Good shelf life. Suitable for hoop houses or greenhouses. An excellent choice for home gardens and market growers. Disease Resistant: V, FF, TMV. Determinate.



[TM592-10 - BHN 602 Tomato Seeds](#)

77 days. Solanum lycopersicum. (F1) BHN 602 Tomato. The plant produces high yields of 10 to 12 oz bright red tomatoes. It has outstanding flavor. Perfect for sandwiches, salads, and slicing. Growers in the Southern States will be able to grow healthy crops using this variety. Recommended for all areas, especially for Alabama, Arkansas, Georgia, Florida, Louisiana, Mississippi, North Carolina, and South Carolina. Produces 40 to 80 tomatoes per plant. An excellent choice for home gardens and market growers. Disease Resistant: V, FFF, TSWV. Determinate. **(Pelleted Seeds)**



[TM915-10 - Big Beef Plus Tomato Seeds](#)

72 days. Solanum lycopersicum. (F1) Big Beef Plus Tomato. The plant produces good yields of very flavorful 12 to 16 oz red beefsteak tomatoes. The best all around beefsteak tomato yet developed. Just like the Big Beef Tomato, it has improved its rich old fashioned tomato flavor. It is very juicy and sweeter than the original Big Beef. Perfect for sandwiches, salads, and slicing. One of the most disease resistant tomato varieties. Crack Resistant. Heat Tolerant. An excellent choice for home gardens. Disease Resistant: V, F, FF, N, A, ALS, St, LB, TMV, TSWV. Indeterminate.



[TM11-10 - Big Beef Tomato Seeds](#)

1994 All-America Selections Winner!

73 days. Solanum lycopersicum. (F1) Big Beef Tomato. This early maturing plant produces good yields of very flavorful 12 to 16 oz red beefsteak tomatoes. The best all around beefsteak tomato yet developed. It has a rich old fashioned tomato flavor and is very juicy. Perfect for sandwiches, salads, and slicing. One of the most disease-resistant tomato varieties. Crack Resistant. Heat Tolerant. An excellent choice for home gardens. Disease Resistant: V, FF, N, A, St, LB, TMV. Indeterminate.



[TM786-10 - Big Brandy Tomato Seeds](#)

78 days. Solanum lycopersicum. (F1) Big Brandy Tomato. The plant produces heavy yields of 12 to 16 oz pink beefsteak tomatoes. It is very sweet, juicy, and flavorful. It has a rich old-fashioned tomato flavor. Perfect for sandwiches, salads, and slicing. Big Brandy Tomato is part of the Heirloom Marriage series. It was created by crossing a Big Dwarf Tomato and a Brandywine Tomato. Suitable for greenhouse production. An excellent choice for home gardens. Indeterminate.



TM256-10 - Big Mama Tomato Seeds

80 days. Solanum lycopersicum. (F1) Big Mama Tomato. The plant produces heavy yields of enormous 5" long by 3" wide red plum-shaped tomatoes. They are very flavorful, very meaty, and have very few seeds. This variety is easy to peel and core. One of the best varieties for making Italian paste, puree, sauce, soups, and salsa. An excellent choice for home gardens. Indeterminate.



TM513-10 - Biltmore Tomato Seeds

80 days. Solanum lycopersicum. (F1) Biltmore Tomato. The plant produces high yields of 8 to 10 oz red tomatoes. This variety has a great tomato flavor. Perfect for sandwiches, salads, and slicing. Crack Resistant. Excellent choice for home gardens and market growers. Disease Resistant: V, FF, A, St. Determinate.



TM328-20 - Black Cherry Tomato

65 days. Solanum lycopersicum. Open Pollinated. This early maturing plant produces high yields of ½ to 1 oz deep purple, mahogany-brown cherry tomatoes. This is the first truly black cherry tomato that has the classic tomato flavor. Perfect for salads, gourmet dishes, vegetable platters, shish-kebabs, or just eating fresh right off the vine. The plant requires support, either staking or cages. An excellent choice for home gardens and specialty market growers. A variety was developed by Vince Sapp of Florida, USA. United States Department of Agriculture, PI 629218. Indeterminate.



TM13-20 - Black from Tula Tomato Seeds

85 days. Solanum lycopersicum. Open Pollinated. Black from Tula Tomato. The plant produces high yields of 10 to 14 oz brownish red beefsteak tomatoes. They have a rich tomato flavor. One of the best black tomato varieties on the market. It has the perfect acid sugar balance. It is the largest of the black tomatoes. Perfect for sandwiches, salads, slicing, and canning. Does well in dry conditions. An excellent choice for home gardens. An heirloom from Ukraine. United States Department of Agriculture, PI 639208. Indeterminate.



TM14-20 - Black Krim Tomato Seeds

80 days. Solanum lycopersicum. Open Pollinated. Black Krim Tomato. The plant produces high yields of 10 to 16 oz dark mahogany, blackish-red beefsteak tomatoes. It has a rich old fashioned tomato flavor. They are very sweet, juicy, and flavorful. Perfect for sandwiches, salads, and slicing. Heat Tolerant. Suitable for containers and patio gardening. An excellent choice for home gardens. An heirloom from the Black Sea region of Russia. Indeterminate.



TM847-20 - Black Opal Tomato Seeds

70 days. Solanum lycopersicum. Open Pollinated. Black Opal Tomato. This early maturing plant produces heavy yields of ½ to 1 oz black cherry tomatoes. Perfect for salads, garnishes, and eating fresh right off the vine. Also great for grilling on skewers or used for making a paste. One of the best black tomato varieties on the market. An improved version of the Black Cherry tomato offers better growth and a firmer texture. An excellent choice for home gardens. A variety from England. Indeterminate.



TM15-20 - Black Plum Tomato

82 days. *Solanum lycopersicum*. Open Pollinated. The plant produces good yields of 2 to 4 oz deep mahogany to black-brown plum-shaped tomatoes. They are very sweet and flavorful. One of the best-tasting black plum-shaped tomatoes on the market. Perfect for making dark red paste and spaghetti sauce. Also great in salads, for drying, and for making salsa. Crack Resistant. Cold Tolerant. An excellent choice for home gardens and market growers. An heirloom from Russia. United States Department of Agriculture, G 33011. Indeterminate.



TM16-20 - Black Prince Tomato Seeds

70 days. *Solanum lycopersicum*. Open Pollinated. Black Prince Tomato. This early plant produces high yields of 3 to 6 oz reddish black tomatoes. It has a rich old fashioned tomato flavor. They are very juicy and flavorful. Perfect for eating fresh right off the vine, for sandwiches, salads, slicing, canning, and making the sauce. This old Russian heirloom has become very popular in gourmet restaurants. Sets fruit in cool climates. It is very productive yielding from 25 to 40 pounds of tomatoes per plant. The plant requires support, either staking or cages. Cold Tolerant. An excellent choice for home gardens and specialty market growers. An heirloom variety from Irkutsk, Siberia, Russia. Indeterminate.



TM116-20 - Black Russian Tomato

80 days. *Solanum lycopersicum*. Open Pollinated. The plant produces good yields of 4 oz dark reddish-black tomatoes. It has a rich tomato flavor. One of the best black variety tomatoes on the market. Perfect for salads, slicing, and sandwiches. An excellent choice for home gardens. An heirloom variety from Russia. Indeterminate.



TM728-20 - Black Tomato

85 days. *Solanum lycopersicum*. Open Pollinated. This compact plant produces good yields of 4 oz dark mahogany brown tomatoes. They are very sweet and delicious. This is one of the best-tasting black tomatoes on the market. Perfect for sandwiches, salads, and slicing. An excellent choice for home gardens. An heirloom variety from Russia. Indeterminate.



TM406-20 - Blondkopfchen Tomato

75 days. *Solanum lycopersicum*. Open Pollinated. The plant produces heavy yields of ½ to 1 oz golden yellow cherry tomatoes. They are very sweet and delicious. One of the best tasting cherry tomatoes. Perfect fresh eating right off the vine or in salads. Grow in clusters of 20 to 30 tomatoes. Crack Resistant. Also known as Little Blonde Girl Tomato. The plant requires support, either staking or cages. An excellent choice for home gardens. United States Department of Agriculture, PI 639208. A variety from Hungary. Disease Resistant. Indeterminate.



TM939-20 - Blue Ribbon Tomato Seeds

71 days. *Solanum lycopersicum*. (F1) Blue Ribbon Tomato. This early maturing plant produces good yields of very flavorful 10 to 15 oz red round tomatoes. It has a rich old-fashioned tomato flavor and is very juicy. It was developed to rival the size and great taste of the original Goliath but it is rounder, more uniform, and has stronger disease resistance. Perfect for sandwiches, salads, and slicing. An excellent choice for home gardens. Disease Resistant: ALS, F, FF, N, St, TMV. Indeterminate. A variety from the USA.



TM945-10 - Bobcat Tomato Seeds

68 days. Solanum lycopersicum. (F1) Bobcat Tomato. This early maturing plant produces high yields of 10 oz shiny red tomatoes. Great tomato flavor with the right balance of sugars and acids. They have smooth skin and are very sweet, meaty, and juicy. Perfect for sandwiches, salads, and slicing. It is a sister of the Better Bush Tomato. The plant has dense foliage that provides excellent protection to the fruit. Suitable for large patio containers. An excellent choice for home gardens, farmer's markets, market growers, open production, and commercial production. Disease Resistant: F, FF, V, St, TMV. Determinate.



TM949-10 - Bodacious Tomato Seeds

85 days. Solanum lycopersicum. (F1) Bodacious Tomato. The plant produces high yields of 12 oz tomatoes. The tomatoes grow in large clusters. They are very sweet, juicy, and flavorful. Perfect fresh eating right off the vine. Excellent for salads, burgers, and sandwiches. Crack Resistant. Easy to harvest. An excellent choice for home gardens. Indeterminate. Disease Resistant.



TM17-20 - Bonny Best Tomato

72 days. Solanum lycopersicum. Open Pollinated. This early maturing plant produces heavy yields of 8 to 10 oz red tomatoes. It has the rich old-fashioned tomato flavor and is often judged as one of the 5 best tasting tomatoes! They are solid and meaty. It became one of the most respected canning varieties in America in the first half of the twentieth century. Also great for sandwiches, salads, slicing, salsas, and sauces. Suitable for Northern regions. Grows in clusters of 6 to 8 tomatoes. An excellent choice for home gardens, market growers, and open field production. An heirloom variety from the USA. United States Department of Agriculture, PI 639208. Disease Resistant: V, F, N. Indeterminate.



TM699-20 - Boondocks Tomato

80 days. Solanum lycopersicum. Open Pollinated. The plant produces high yields of 1 to 2 lb deep pink beefsteak tomatoes. It has a superb, rich flavor, high in both sugar and acid. They are similar to the Brandywine Tomato. Perfect for sandwiches, salads, and slicing. A potato leaf variety. Excellent choice for home gardens. An heirloom variety from New York, USA. Indeterminate.



TM201-20 - Box Car Willie Tomato Seeds

80 days. Solanum lycopersicum. Open Pollinated. Box Car Willie Tomato. The plant produces heavy yields of 10 to 16 oz red tomatoes. It has a rich old-fashioned tomato flavor. Perfect for canning, freezing, sauces, salads, sandwiches, slicing, tomato juice, or for making home-cooked meals. Thought to have been named after the legendary country singer Box Car Willie of the Grand Ole Opry. Crack Resistant. An excellent choice for home gardens. An heirloom variety from the USA. Indeterminate.



TM957-10 - Brandy Boy Tomato Seeds

78 days. Solanum lycopersicum. (F1) Brandy Boy Tomato. The plant produces good yields of 14 oz pink Beefsteak tomatoes. They are very flavorful and sweet. It has the same Brandywine heirloom flavor but with improved disease resistance and higher and earlier yields. Excellent for salads, sandwiches, and slicing. An excellent choice for home gardens. Indeterminate. Disease Resistant.



[TM569-20 - BrandyMaster Pink Tomato Seeds](#)

80 days. Solanum lycopersicum. (F1) BrandyMaster Pink Tomato. The plant produces good yields of 10 to 16 oz shiny pink beefsteak tomatoes. They are firm, juicy, and have a rich tomato flavor. This is a strain of the famous Brandywine varieties. The plant does well under a wide range of weather conditions. A potato leaf variety. An excellent choice for home gardens. Disease Resistant: V, F, N. Indeterminate.



[TM570-20 - BrandyMaster Red Tomato Seeds](#)

80 days. Solanum lycopersicum. (F1) BrandyMaster Red Tomato. The plant produces good yields of 10 to 16 oz shiny red beefsteak tomatoes. They are firm, juicy, and have a rich tomato flavor. This is a strain of the famous Brandywine varieties. The plant does well under a wide range of weather conditions. A potato leaf variety. Excellent choice for home gardens. Disease Resistant: V, F, N. Indeterminate.



[TM571-20 - BrandyMaster Yellow Tomato](#)

80 days. Solanum lycopersicum. (F1) The plant produces good yields of 10 to 16 oz shiny yellow beefsteak tomatoes. They are firm, juicy, and have a rich tomato flavor. This is a strain of the famous Brandywine varieties. The plant does well under a wide range of weather conditions. A potato leaf variety. Excellent choice for home gardens. Disease Resistant: V, F, N. Indeterminate.



[TM860-10 - BrandySweet Plum Tomato](#)

75 days. Solanum lycopersicum. Open Pollinated. The plant produces high yields of 1 oz pink cherry tomatoes. They are very sweet and flavorful. It has the rich complex flavors of Brandywine tomato. Perfect fresh eating right off the vine or in salads. A cross between a Brandywine tomato and a Sweet 100 Cherry Tomato. A potato leaf variety. An excellent choice for home gardens. A variety developed in the USA. Indeterminate.



[TM928-20 - Brandywine Black Tomato \(Weaver's Strain\)](#)

80 days. Solanum lycopersicum. Open Pollinated. The plant produces heavy yields of 16 oz dark mahogany beefsteak tomatoes. It has a rich old-fashioned tomato flavor. Perfect for sandwiches, salads, and slicing. A potato leaf variety from the collection of William Woys Weaver. An excellent choice for home gardens. A variety was developed by Dr. Harold Martin in the late 1920s. Indeterminate.



[TM19-20 - Brandywine Black Tomato Seeds](#)

90 days. Solanum lycopersicum. Open Pollinated. Brandywine Black Tomato. The plant produces good yields of 12 to 16 oz dark mahogany beefsteak tomatoes. It has a rich old fashioned tomato flavor. Perfect for sandwiches, salads, and slicing. A potato leaf variety. An excellent choice for home gardens. A 1920s Quaker heirloom variety from Pennsylvania, USA. Indeterminate.



[TM238-20 - Brandywine Landis Valley Tomato Seeds](#)

78 days. Solanum lycopersicum. Open Pollinated. Brandywine Landis Valley Tomato. The plant produces high yields of 8 to 12 oz red beefsteak tomatoes. It has a rich old fashioned tomato flavor. Perfect for sandwiches, salads, and slicing. It is much larger and smoother than the regular Brandywine Red Tomato. This strain has regular leaf foliage. Excellent choice for home gardens. An 1885 heirloom variety from Chester County, Pennsylvania, USA. Indeterminate.



[TM802-10 - Brandywine Liam's Tomato Seeds](#)

80 days. Solanum lycopersicum. Open Pollinated. Brandywine Liam's Tomato. The plant produces good yields of 1 to 2 lb pink beefsteak tomatoes. Very flavorful. Perfect for sandwiches, salads, and slicing. These tomatoes are a cross between a Brandywine Tomato and a Luck Cross Tomato. An excellent choice for home gardens. An heirloom variety from Pennsylvania, USA. Indeterminate.



TM175-10 - Brandywine OTV Tomato Seeds

85 days. Solanum lycopersicum. Open Pollinated. Brandywine OTV Tomato. The plant produces high yields of 12 to 16 oz red beefsteak tomatoes. It has a rich old fashioned tomato flavor. OTV stands for Off the Vine. It is a cross of a Yellow Brandywine Tomato and an unknown red variety. It has greater yields than other Brandywine varieties. This is the most productive and heat tolerant Brandywine. A potato leaf variety. Heat Tolerant. An excellent choice for home gardens. An heirloom variety from the USA. Indeterminate.



TM20-20 - Brandywine Pink Tomato

85 days. Solanum lycopersicum. Open Pollinated. The plant produces good yields of 1 to 1 ½ lb pinkish-red beefsteak tomatoes. It has a rich old-fashioned tomato flavor. This variety won several taste testing awards and is one of the best-tasting tomatoes in the world. Perfect for sandwiches, salads, and slicing. A potato leaf variety. An excellent choice for home gardens. An Amish heirloom variety from the USA dating back to 1885. United States Department of Agriculture, PI 639209. Indeterminate.



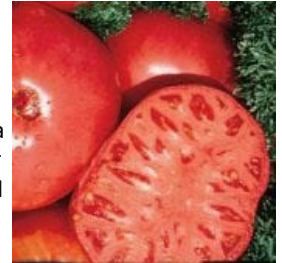
TM698-20 - Brandywine Potato Leaf Tomato

85 days. Solanum lycopersicum. Open Pollinated. The plant produces high yields of 10 to 16 oz red beefsteak tomatoes. It has a rich old-fashioned tomato flavor. Perfect for sandwiches, salads, and slicing. It is named after the Brandywine River in Chester County, Pennsylvania, USA. This is the potato leaf Brandywine Tomato variety. An excellent choice for home gardens. An Amish heirloom variety dating back to 1885. Indeterminate.



TM21-20 - Brandywine Regular Leaf Tomato Seeds

85 days. Solanum lycopersicum. Open Pollinated. Brandywine Regular Leaf Tomato. The plant produces high yields of 10 to 16 oz red beefsteak tomatoes. It has a rich old fashioned tomato flavor. Perfect for sandwiches, salads, and slicing. It is named after the Brandywine River in Chester County, Pennsylvania, USA. This is the regular leaf Brandywine Tomato variety. An excellent choice for home gardens. An 1800s heirloom variety from the USA. Indeterminate.



TM225-10 - Brandywine Sudduth's Strain Tomato Seeds

85 days. Solanum lycopersicum. Open Pollinated. Brandywine Sudduth's Strain Tomato. The plant produces good yields of 1 to 3 lb pink beefsteak tomatoes. It has a rich old fashioned tomato flavor. Perfect for sandwiches, salads, and slicing. This is believed to be of the original Brandywine variety. A potato leaf variety. Excellent choice for home gardens. A 1900 heirloom variety from Mrs. Doris Sudduth Hill. United States Department of Agriculture, G 33012. Indeterminate.



TM239-10 - Brandywine Yellow Platfoot Strain Tomato Seeds

85 days. Solanum lycopersicum. Open Pollinated. Brandywine Yellow Platfoot Strain Tomato. The plant produces high yields of 1 to 2 lb yellow beefsteak tomatoes. It has a rich old fashioned tomato flavor. Perfect for sandwiches, salads, and slicing. It has higher yields and a smoother shape than the Yellow Brandywine Tomato. One of the best tasting yellow tomatoes on the market. A potato leaf strain. An excellent choice for home gardens. A 1996 heirloom variety was developed by Gary Platfoot of Ohio, USA. Indeterminate.



TM22-20 - Brandywine Yellow Tomato Seeds

90 days. Solanum lycopersicum. Open Pollinated. Brandywine Yellow Tomato. The plant produces good yields of large 1 to 1 ½ lb yellow beefsteak tomatoes. It has a rich old fashioned tomato flavor. Perfect for sandwiches, salads, and slicing. Some say it's better tasting than Pink Brandywine Tomato. The plant has potato leaf foliage. An excellent choice for home gardens. An heirloom variety from Charles Knoy of Indiana, USA. Indeterminate.



TM882-10 - Brenda Tomato Seeds

80 days. Solanum lycopersicum. (F1) Brenda Tomato. The plant produces high yields of 4 to 4 ½ oz red Roma-type tomatoes. It is very flavorful and perfect for salads. The plant is very strong and vigorous and has good foliage protecting tomatoes from sun-scald. An excellent choice for home gardens, market growers, and open field production. Disease Resistance: V, FF, TMV, TSWV, TYLCV. Determinate.



[TM288-20 - Brown Berry Tomato Seeds](#)

75 days. Solanum lycopersicum. Open Pollinated. Brown Berry Tomato. The plant produces heavy yields of ½ to ¾ oz brown cherry tomatoes. Just when you thought you saw every possible shade of cherry tomatoes, here comes an earthly brown cherry tomato. They are very sweet, juicy, and flavorful. Perfect for salads, snacks, garnishes, or culinary creations. An excellent choice for home gardens and specialty market growers. A variety from the Netherlands. Indeterminate.



[TM157-20 - Burbank Red Slicing Tomato Seeds](#)

70 days. Solanum lycopersicum. Open Pollinated. Burbank Red Slicing Tomato. This early maturing bush plant produces heavy yields of 6 to 8 oz deep red tomatoes. They are very flavorful. Perfect for sandwiches, salads, slicing, and canning. Tested very high in amino acids. The plant does well in dry regions and doesn't require staking. Crack Resistant. Also known as Burbank Tomato. An excellent choice for home gardens and market growers. An heirloom variety was developed by master plant breeder Luther Burbank in 1915 in the USA. United States Department of Agriculture, PI 644885. Determinate.



[TM26-10 - Burpee Supersteak Tomato Seeds](#)

80 day. Solanum lycopersicum. (F1) Burpee Supersteak Tomato. The plant produces high yields of large 1 to 2 lb red beefsteak tomatoes. It has the rich old fashioned beefsteak tomato flavor. They are juicy, meaty, and very flavorful. Perfect for sandwiches, salads, and slicing. Crack Resistant. An excellent choice for home gardens. Disease Resistant: VFN. Indeterminate



[TM582-10 - Bush Early Girl II Tomato Seeds](#)

54 days. Solanum lycopersicum. (F1) Bush Early Girl II Tomato. This early maturing bush plant produces huge yields of 6 to 7 oz red tomatoes. They are firm, meaty, very flavorful, and larger than its sister Early Girl. Perfect for salsa, salads, and cooking. Perfect for container gardening, patios, or small gardens where space is very limited. They are amazingly compact and self supporting, Plant produce heavy yields averaging 100 tomatoes or more from each plant. An excellent choice for home gardens. Disease Resistant: VFFN, TMV. Determinate.



[TM948-10 - BushSteak Tomato Seeds](#)

65 days. Solanum lycopersicum. (F1) BushSteak Tomato. This early maturing compact plant produces high yields of 12 oz beefsteak tomatoes. They are very sweet and flavorful. Perfect fresh eating right off the vine or in salads. Suitable for containers, patios, and small gardens. An excellent choice for home gardens. Determinate.



[TM241-20 - Carbon Tomato Seeds](#)

80 days. Solanum lycopersicum. Open Pollinated. Carbon Tomato. The plant produces good yields of large 8 to 12 oz reddish-black beefsteak tomatoes. One of the best tasting black tomatoes on the market. This is the darkest of the black tomatoes. Winner of the 2005 Heirloom Garden Show best tasting tomato award. Perfect for sandwiches, salads, and slicing. An excellent choice for home gardens. An heirloom variety. Indeterminate.



[TM31-10 - Caspian Pink Tomato Seeds](#)

80 days. Solanum lycopersicum. Open Pollinated. Caspian Pink Tomato. The plant produces excellent yields of large 10 to 12 oz pink beefsteak tomatoes. One of the best tasting tomatoes on the market. The first tomato to beat Brandywine in taste tests. The Caspian Pink beat the Brandywine varieties in three straight taste tests. Perfect for sandwiches, salads, and slicing. The plant requires support, either staking or cages. An excellent choice for home gardens. An heirloom variety from the Caspian and Black Sea region of Russia. Indeterminate.



[TM751-20 - Celebration Tomato Seeds](#)

72 days. Solanum lycopersicum. (F1) Celebration Tomato. This early maturing plant produces heavy yields of attractive 8 oz deep red tomatoes. It is very flavorful and performed better than the Celebrity Tomato in test trials, Perfect for sandwiches, salads, and slicing. This high quality tomato is used for commercial production and is sure to become the home garden favorite. Suitable for container gardening. Crack Resistant. Plants are well adaptable to most areas. Drought Tolerant. An excellent choice for home gardens and market growers. Determinate.



[TM670-20 - Ceylon Tomato Seeds](#)

65 days. Solanum lycopersicum. Open Pollinated. Ceylon Tomato. This early maturing plant produces large yields of small 3 oz red beefsteak tomatoes. They are sweet with a bit of zing added in. Perfect for cutting into halves for a salad or using on plates as a garnish. It is a large cherry size tomato, only 2 1/2" wide, but has the look of heirloom tomato with the rich tomato flavor to match. Excellent choice for home gardens. An heirloom from Bryan Connolly of Mansfield Center, Connecticut, USA. Indeterminate.



[TM379-20 - Chadwick's Cherry Tomato Seeds](#)

80 days. Solanum lycopersicum. Open Pollinated. Chadwick's Cherry Tomato. The plant produces high yields of 1 oz red cherry tomatoes. One of the best tasting cherry tomatoes. Perfect for salads and snacks. Grows in clusters of six tomatoes. An excellent choice for home gardens and market growers. An heirloom variety developed by English horticulturalist Alan Chadwick. Indeterminate.



[TM274-20 - Chalk's Early Jewel Tomato](#)

75 days. Solanum lycopersicum. Open Pollinated. The plant produces heavy yields of 4 to 6 oz red tomatoes. They are very sweet and flavorful. It has a rich old-fashioned tomato flavor. Perfect for sandwiches, salads, and slicing. Very dependable as it is always ready by June 30th of each year. An excellent choice for home gardens. An 1889 heirloom variety developed by James Chalk of Norristown, Pennsylvania, USA. United States Department of Agriculture, PI 339940. Indeterminate.



[TM584-10 - Champion II Tomato](#)

65 days. Solanum lycopersicum. (F1) This early maturing plant produces high yields of 6 to 8 oz red tomatoes. Perfect for sandwiches, salads, and slicing. It has the same desirable qualities and flavor as the original Champion Tomato with even more disease resistance. Heat Tolerant. Excellent choice for home gardens and market growers. Disease Resistant: V, FF, N, A, TMV, TYLCV. Indeterminate.



TM910-20 - Chef's Choice Green Tomato

2016 All-America Selections Winner!

75 days. Solanum lycopersicum. (F1) The plant produces high yields of 9 to 10 oz bright green beefsteak tomatoes with yellow stripes. They have very good flavor and texture. Perfect for sandwiches, salads, and slicing. Low acidity variety. Crack Resistant. An excellent choice for home gardens and specialty market growers. Disease Resistance: A, TMV. Indeterminate.



TM917-10 - Cherokee Carbon Tomato Seeds

78 days. Solanum lycopersicum. Open Pollinated. Cherokee Carbon Tomato. The plant produces high yields of 10 to 12 oz purple beefsteak tomatoes. It has a rich old-fashioned tomato flavor and is very sweet. It has improved yield, earlier maturity, and fewer blemishes while maintaining old-time flavor. Perfect for sandwiches, salads, and slicing. It is a cross between Cherokee Purple and Carbon. Crack Resistant. Indeterminate.



TM748-10 - Cherokee Chocolate Tomato Seeds

80 days. Solanum lycopersicum. Open Pollinated. Cherokee Chocolate Tomato. The plant produces high yields of 10 to 16 oz brownish red mahogany beefsteak tomatoes. They grow in clusters of 2 to 4 tomatoes. It has a rich old fashioned tomato flavor. It is tastier, juicier, and more productive than its sister variety, the Cherokee Purple Tomato. A cross between using the Cherokee Purple tomato and an heirloom variety. Perfect for sandwiches, salads, and slicing. The plant requires support, either staking or cages. An excellent choice for home gardens. An heirloom was developed in 1995 by Craig LeHoullier of Tennessee, USA. Disease Resistant: V, F. Indeterminate.



TM34-20 - Cherokee Purple Tomato Seeds

85 days. Solanum lycopersicum. Open Pollinated. Cherokee Purple Tomato. The plant produces high yields of 8 to 12 oz purplish pink beefsteak tomatoes. It has a rich old fashioned tomato flavor. It consistently ranks very high in taste tests. Perfect for sandwiches, salads, and slicing. One of the best tasting heirloom tomatoes. To maximize yield potential, either stake or use cages. It has been grown over 100 years ago by the Cherokee Indians. An excellent choice for home gardens. An 1890 heirloom variety from Tennessee, USA. United States Department of Agriculture, PI 639211. Indeterminate.



TM549-20 - Cherry Roma Tomato

80 days. Solanum lycopersicum. Open Pollinated. The plant produces heavy yields of 1 oz red plum-shaped tomatoes. It is a miniature Roma tomato that is bursting with an intense sweet flavor. Winner of several tasting tests. Perfect for salads and snacks. Also known as Baby Roma. Excellent choice for home gardens. An heirloom variety from Meilie Moy-Hodnett of Maryland, USA. Indeterminate.



TM400-20 - Chocolate Cherry Tomato Seeds

70 days. Solanum lycopersicum. Open Pollinated. Chocolate Cherry Tomato. This early maturing plant produces high yields of ½ to ¾ oz chocolate cherry tomatoes. They grow in a cluster of 6 to 8 tomatoes. It is very flavorful. They hold very well on the plant. They can be picked several days before completely mature and allowed to ripen off the vine without sacrificing quality. Perfect for salads and for gourmet dishes and vegetable platters. Crack Resistant. Suitable for greenhouse growers that want tall plants to best use their space. An excellent choice for home gardens, greenhouses, and market growers. A variety from the USA. Indeterminate.



TM941-20 - Chocolate Pear Tomato

70 days. Solanum lycopersicum. Open Pollinated. This early maturing plant produces high yields of chocolate-brown pear-shaped tomatoes. They grow in clusters of 10 to 12 tomatoes. It has a rich old-fashioned tomato flavor. Perfect for salads, pasta, or eating fresh off the plant. The plant requires support, either staking or cages. An excellent choice for home gardens. Indeterminate.



TM952-10 - Chuck's Yellow Beefsteak Tomato Seeds

85 days. Solanum lycopersicum. Open Pollinated. Chuck's Yellow Beefsteak Tomato. The plant produces good yields of large 1 - 2 lb beefsteak tomatoes. These beautiful yellow orange tomatoes are very sweet, juicy, and flavorful. A low acid tomato. It is named after the seedsman Chuck Wyatt. Excellent for salads, sandwiches, and slicing tomato. An excellent choice for home gardens. A variety from the USA. Indeterminate.



TM394-10 - Cobra Tomato

70 days. Solanum lycopersicum. (F1) This early maturing plant produces heavy yields of large 6 to 8 oz ruby red tomatoes. Very flavorful. Perfect for sandwiches, salads, slicing, and canning. It is the best-tasting greenhouse variety on the market. This is a special high-quality greenhouse variety that grows in clusters of 6 to 8. It is suitable for both greenhouse and open field production. Crack Resistant. For best results, prune the plants to 1 or 2 leaders. An excellent choice for home gardens, greenhouses, market growers, and open field production. Disease Resistant: V, FF, St, TMV. Indeterminate.



TM36-20 - Cold Set Tomato Seeds

65 days. Solanum lycopersicum. Open Pollinated. Cold Set Tomato. The plant produces good yields of 4" size red tomatoes. They are very flavorful. Perfect for sandwiches, salads, and slicing. You can sow the seeds directly into the garden. The seeds will withstand temperatures as low as 18 degrees in Canadian trials. An excellent choice for home gardens. An heirloom variety from Canada. United States Department of Agriculture. PI 339914. Determinate.



TM255-10 - Comstock Sauce & Slice Tomato

90 days. Solanum lycopersicum. Open Pollinated, The plant produces good yields of 1 lb deep red Roma tomatoes. This is probably one of the best paste tomatoes on the market. It is meaty, has few seeds, and is very delicious. Excellent for salads, sandwiches, paste, and sauces. Our customers say that this is the best paste tomato they grew. An excellent choice for home gardens, farmer's markets, and market growers. An 1800s heirloom variety from Italy. Indeterminate.



TM472-20 - Country Taste Tomato

70 days. Solanum lycopersicum. (F1) This early maturing plant produces high yields of large 1 lb deep red beefsteak tomatoes. They are meaty, juicy, and very flavorful. It has a rich old-fashioned tomato flavor. Perfect for sandwiches, salads, slicing, and sauces. One of the best beefsteak varieties on the market. Crack Resistant. An excellent choice for home gardens and market growers. Disease Resistant: V, FF, TMV. Indeterminate.



TM695-20 - Coustralee Tomato

85 days. Solanum lycopersicum. Open Pollinated. The plant produces high yields of large 1 to 3 lb red beefsteak tomatoes. They are very flavorful. It has a rich old-fashioned tomato flavor. Perfect for sandwiches, salads, and slicing. Excellent choice for home gardens. An heirloom variety from Norbert Pairerra of Hellimer, France. Indeterminate.



TM869-10 - Coyote Tomato Seeds

65 days. Solanum lycopersicum. Open Pollinated. Coyote Tomato. This early maturing plant produces high yields of ¼ to ½ oz creamy ivory yellow cherry tomatoes. It is sweet and very flavorful. Perfect for eating fresh right off the vine, in salads, and for garnishes. They grow in clusters of 6 to 8. Crack Resistant. The plant produces hundreds to even a few thousand tomatoes on a single plant. Excellent choice for home gardens. An heirloom variety from Vera Cruz, Mexico. Indeterminate.



TM336-10 - Cuban Yellow Grape Tomato

90 day. Solanum lycopersicum. Open Pollinated. The plant produces high yields of yellow grape tomatoes. They are very sweet and flavorful. Perfect for salads, snacks, and garnishes. Grow in long clusters. Crack Resistant. An excellent choice for home gardens and specialty market growers. A variety from Cuba. Indeterminate.



TM944-20 - Culinary Blend Tomato Seeds

75-90 days. Solanum lycopersicum. Open Pollinated. The plants produce excellent yields of a mixture of full-flavored tomatoes of all colors and sizes. They are very sweet, meaty, juicy, and flavorful. Perfect for sandwiches, salads, slicing, and gourmet dishes. The tomatoes come in red, pink, orange, and yellow. Excellent choice for home gardeners and chefs. A variety from the USA. Indeterminate.



TM403-10 - Cupid Tomato Seeds

62 days. Solanum lycopersicum. (F1) Cupid Tomato. This early maturing plant produces heavy yields of ½ to ¾ oz red grape tomatoes. There are a lot of grape tomatoes on the market, but Cupid advances to the next level in the areas of quality, flavor, yields, and holding ability. Crack Resistant. The grapes grow in clusters of 18. They keep producing all season long up to the first frost. Great eating right off the vine, or in salads. The plant requires support, either staking or cages. Heat Tolerant. An excellent choice for home gardens. A variety from the USA. Disease Resistant: F, A, St. Indeterminate.



TM591-10 - Dagma's Perfection Tomato

72 days. Solanum lycopersicum. Open Pollinated. This early maturing plant produces high yields of 12 to 14 oz bi-color pale yellow beefsteak tomatoes with light red striping. They are very firm, juicy, and very flavorful with a hint of lime. Perfect for salads, slicing, and garnishes. An excellent choice for home gardens. Indeterminate.



TM851-10 - Defiant Tomato

70 days. Solanum lycopersicum. (F1) This early maturing plant produces high yields of 6 to 8 oz bright red round tomatoes. Perfect for sandwiches, salads, and slicing. This tomato surpasses all other tomatoes being the first tomato bred for Early Blight and Late Blight while maintaining the old-fashioned tomato flavor. An excellent choice for home gardens and market growers. Disease Resistant: V, FF, EB, LB. Determinate.



TM41-20 - Delicious Tomato Seeds

77 day. Solanum lycopersicum. Open Pollinated. Delicious Tomato. The plant produces good yields of 1 to 2 lb scarlet red beefsteak tomatoes. You might even get one that exceeds 3 lbs. They are meaty, juicy, and very delicious. It has a rich old-fashioned tomato flavor. Perfect for sandwiches, salads, slicing, tomato juice, and canning. This tomato held the Guinness World Record as the largest tomato ever grown at 7.75 pounds for over 28 years! One of our best-selling tomatoes. It has very few seeds. Impress your neighbors and try growing a World Record size tomato! Stores well for weeks. Crack Resistant. An excellent choice for home gardens. An heirloom variety from Pennsylvania, USA. United States Department of Agriculture, PI 639212. Indeterminate.



TM832-20 - Dester Tomato Seeds

80 days. Solanum lycopersicum. Open Pollinated. Dester Tomato. The plant produces heavy yields of 1 to 2 lb pink beefsteak tomatoes. They have a rich sweet flavor and have won numerous taste test competitions. Perfect for canning, salads, slicing, and sandwiches. Excellent choice for home gardens. An heirloom variety originating from Germany and brought to the USA by Dr. Herbert Edgar Dester. Indeterminate.



TM42-10 - Dona Tomato Seeds

75 days. Solanum lycopersicum. Open Pollinated. Dona Tomato. The plant produces good yields of 6 to 8 oz glossy red tomatoes. This variety has a perfect acid sugar ratio balance and is very flavorful. It is meaty and has very few seeds. Perfect for sandwiches, salads, and slicing. An excellent choice for home gardens. A variety from France. Disease Resistant: V, FF, N, TMV. Indeterminate.



TM727-10 - Dr Wyche's Yellow Tomato Seeds

78 days. Solanum lycopersicum. Open Pollinated. Dr Wyche's Yellow Tomato. The plant produces heavy yields of 10 to 16 oz yellow beefsteak tomatoes. They start out as a golden yellow color and turn a tangerine orange color when mature. It is meaty, sweet, and tangy and one of the best tasting orange beefsteak tomatoes. Perfect for sandwiches, salads, and slicing. Low acidity variety. The plant requires support, either staking or cages. Also known as Hot Yellow Tomato and was renamed after Dr. Wyche in his honor after his passing. An excellent choice for home gardens. An heirloom variety from Dr. John Wyche. Indeterminate.



TM172-20 - Druzba Tomato

85 days. Solanum lycopersicum. Open Pollinated. The plant produces heavy yields of 4 to 8 oz deep red mini beefsteak tomatoes. This variety has superb flavor. We've never seen such a beautiful heirloom tomato that is perfectly formed, pure red, and smooth-skinned! Perfect for sandwiches, burgers, salads, and slicing. Also known as Drushba and Druzha. Grows in clusters of 2 to 4. Crack Resistant. Always a great seller at Farmer's Markets! Excellent choice for home gardens and market growers. An heirloom variety from Bulgaria. United States Department of Agriculture, PI 407445. Disease Resistant. BER. Indeterminate.



TM692-10 - Earl's Faux Tomato Seeds

80 days. Solanum lycopersicum. Open Pollinated. Earl's Faux Tomato. The plant produces good yields of large 12 to 16 oz deep pink beefsteak tomatoes. They are smooth and have a deliciously rich flavor that is both sweet and complex. The flavor is so good that this variety has won several awards in tomato-tasting contests. Perfect for sandwiches, salads, and slicing. A potato leaf variety. Excellent choice for home gardens. An heirloom variety from Earl Cadenhead of Franklin, Ohio, USA. Indeterminate.



TM160-20 - Early Girl Tomato Seeds

52 days. Solanum lycopersicum. (F1) Early Girl Tomato. This early maturing plant produces heavy yields of flavorful 4 to 6 oz red tomatoes. They are meaty with incredible flavor and aroma. Perfect for sandwiches, salads, and slicing. High in Vitamin A and C. One of the earliest slicing tomatoes on the market. Produces very heavy yields averaging 300 tomatoes from each plant! To maximize yield potential, either stake or use cages. The plant keeps bearing heavily throughout the summer. Heat Tolerant. Excellent choice for home gardens and market growers. Disease Resistant: V, FF. Indeterminate.



[TM43-10 - Early Pick Tomato Seeds](#)

62 days. *Solanum lycopersicum*. (F1) Early Pick Tomato. This early maturing plant produces good yields of 8 to 16 oz scarlet red beefsteak tomatoes. It has a rich old-fashioned tomato flavor. Perfect for sandwiches, salads, and slicing. This variety can set fruit in a wide range of temperatures. The plant produces well with low night temperatures and West Coast weather. Plants produce bumper crops all summer. An excellent choice for home gardens and market growers. Disease Resistant: V, F. Indeterminate.



[TM590-20 - Early Wonder Tomato](#)

54 days. *Solanum lycopersicum*. Open Pollinated. This early maturing plant produces high yields of 6 oz dark pink tomatoes. It has a rich old-fashioned tomato flavor. Perfect for sandwiches, salads, and slicing. Suitable for container gardening. An excellent choice for home gardens. An heirloom was developed by Burgess Seed in 1950. United States Department of Agriculture, PI 303729. Determinate.



[ES2 - Emergency Survival Seeds Kit \(16 Vegetable Varieties\)](#)

This Emergency Survival Seeds Kit has 16 different vegetable varieties with a shelf life of up to 10 years. The seeds are specially dried and sealed for long-term emergency survival seed storage. All seeds are open-pollinated varieties. Emergency Survival Seed Kit should be a priority for any preparedness plan for war or national disasters. The seeds selected are adaptable to short-season climates and do well in all regions of the country and are easy to grow for first-time gardeners. The sealed can contain approximately 1.4 lbs of seeds which is enough to grow a ¼ of an acre.



Includes: Bush Beans, Beets, Cabbage, Carrots, Corn, Cucumbers, Lettuce, Onions, Peas, Sweet Peppers, Radishes, Spinach, Summer Zucchini Squash, Winter Squash, Swiss Chard, Tomatoes.

[ES4 - Emergency Survival Seeds Kit \(20 Vegetables Varieties\)](#)

This Emergency Survival Seeds Kit has 20 different vegetable varieties. The seeds are specially dried and sealed for long-term emergency survival seed storage. All seeds are open-pollinated heirloom varieties and 100% non-GMO. This kit should be a priority for any preparedness plan for national food shortages, war, or national disasters. The seeds selected are adaptable to short-season climates and do well in all regions of the country and are easy to grow for first-time gardeners. It includes planting instructions and a seed-saving guide. The kit includes Beets, Broccoli, Brussels Sprouts, Cabbage, Cauliflower, Celery, Cucumbers, Eggplants, Hot Peppers, Kohlrabi, Okra, Pumpkins, Radishes, Squash, Sweet Peppers, and Tomatoes. Buy and keep a supply of kits to provide for family security during times of uncertainty in the food supply chain. The kits are moisture-proof and come in a resealable bag.



[ES1 - Emergency Survival Seeds Kit \(21 Vegetable Varieties\)](#)

This Emergency Survival Seeds Kit has 21 different vegetable varieties with a shelf life of up to 10 years. The seeds are specially dried and sealed for long-term emergency survival seed storage. All seeds are open-pollinated varieties. Emergency Survival Seed Kit should be a priority for any preparedness plan for war or national disasters. The seeds selected are adaptable to short-season climates and do well in all regions of the country and are easy to grow for first-time gardeners. The sealed can contain approximately 1.4 lbs of seeds which is enough to grow a ¼ of an acre.



Includes: Bush Beans, Beets, Cabbage, Cantaloupes, Carrots, Corn, Cucumbers, Hot Peppers, Kale, Lettuce, Onions, Peas, Sweet Peppers, Radishes, Romaine, Spinach, Summer Squash, Winter Squash, Cherry Tomato, Slicing Tomato, Watermelons.

[ES3 - Emergency Survival Seeds Kit \(32 Vegetable Varieties\)](#)

This Emergency Survival Seeds Kit has 32 different vegetable varieties. The seeds are specially dried and sealed for long-term emergency survival seed storage. All seeds are open-pollinated heirloom varieties and 100% non-GMO. Emergency Survival Seed Kit should be a priority for any preparedness plan for national food shortages, war, or national disasters. The seeds selected are adaptable to short-season climates and do well in all regions of the country and are easy to grow for first-time gardeners. It includes planting instructions and a seed-saving guide. The kit includes Beans, Beets, Broccoli, Brussels Sprouts, Cabbage, Cantaloupes, Carrots, Cauliflower, Celery, Corn, Cucumbers, Eggplants, Kale, Lettuce, Okra, Onions, Peas, Parsnips, Pumpkins, Radishes, Spinach, Squash, Sunflowers, Sweet Peppers, Swiss Chard, Tomatoes, Turnips, and Watermelons. Buy and keep a supply of kits to provide for family security during times of uncertainty in the food supply chain. The kits are moisture-proof and come in a resealable bag.



[TM896-10 - Fantastico Tomato](#)

2014 All-America Selections Winner!

60 days. Solanum lycopersicum. (F1) This early maturing plant produces heavy yields of ½ to 1 oz bright red grape tomatoes. They are super sweet and very flavorful. Grows in clusters. Produces heavy yields up to 12 pounds per plant. The first grape tomato plant was bred specially for patios! Suitable for hanging baskets, patio tomato, containers, small gardens, and hydroponics gardening. Good shelf life. An excellent choice for home gardens. Disease Resistant: LB. Determinate.



[TM231-20 - Federle Tomato Seeds](#)

85 days. Solanum lycopersicum. Open Pollinated. Federle Tomato. The plant produces high yields of 7" long bright red banana shaped tomatoes. Tomato has a full rich tomato flavor and very few seeds. Excellent for making paste, puree, and heavy sauces. Also good for making salsa. An heirloom from West Virginia, USA. Indeterminate.



[TM609-20 - Fireworks Tomato](#)

60 days. Solanum lycopersicum. Open Pollinated. This early maturing plant produces high yields of 8 to 10 oz bright red tomatoes. They are very sweet, meaty, and flavorful. It is one of the largest and earliest red slicing tomatoes available on the market. Perfect for sandwiches, salads, and slicing. An excellent choice for home gardens. Indeterminate.



[TM373-20 - First Prize Tomato Seeds](#)

75 days. Solanum lycopersicum. (F1) First Prize Tomato. The plant produces high yields of large 10 to 12 oz red tomatoes. They are very flavorful. Perfect for sandwiches, salads, and slicing. The plant continues to bear tomatoes over a long season. Excellent choice for home gardens. Disease Resistant: V, FF, N, TMV. Indeterminate.



[TM741-10 - Fourth of July Tomato Seeds](#)

49 days. Solanum lycopersicum. (F1) Fourth of July Tomato. This extra early maturing plant produces high yields of 4 oz bright red tomatoes. Perfect for sandwiches, salads, and slicing. They are very flavorful. You can celebrate these tomatoes by the Fourth of July. Heat Tolerant. Excellent choice for home gardens. Indeterminate. A variety from the USA.



[TM358-20 - Fox Tomato](#)

75 days. Solanum lycopersicum. Open Pollinated. The plant produces good yields of large 1 oz red cherry tomatoes. They are very flavorful. One of the best-tasting large cherries. Perfect for salads and snacks. The plant requires support, either staking or cages. Excellent choice for home gardens. A heirloom variety. Indeterminate.



[TM936-10 - Galahad Tomato](#)

2020 All-America Selections Winner!

69 days. Solanum lycopersicum. (F1) This early maturing compact plant produces high yields of 7 to 12 oz shiny red tomatoes. An AAS Award Winning variety! Great tomato flavor. They are very sweet, meaty, and juicy. Perfect for sandwiches, salads, and slicing. One of the most disease-resistant tomato varieties. It has fantastic flavor and impressive disease resistance. It can be harvested with green shoulders and ripened in storage. Crack Resistant. Does well in the North, Midwest, and Southern parts of the country. An excellent choice for home gardens, farmer's markets, market growers, open production, and commercial production. Disease Resistant: F, FF, FFF, GLS, LB, N, V, TSWV. Determinate.



[TM404-10 - German Giant Tomato Seeds](#)

77 days. Solanum lycopersicum. Open Pollinated. German Giant Tomato. The plant produces good yields of 1 to 2 lb deep pink tomatoes. They are smooth in shape and are very flavorful, similar to the Brandywine varieties. Perfect for sandwiches, salads, and slicing. A potato leaf variety. An excellent choice for home gardens. A rare heirloom variety from Germany. Indeterminate.



[TM369-20 - German Johnson Potato Leaf Tomato](#)

80 days. Solanum lycopersicum. Open Pollinated. The plant produces good yields of 12 to 24 oz dark pinkish-red beefsteak tomatoes. They are very sweet, meaty, juicy, and flavorful. Low acidity variety. A potato leaf variety. Crack Resistant. An excellent choice for home gardens. An heirloom variety from North Carolina and Virginia, USA. Indeterminate.



[TM48-20 - German Johnson Regular Leaf Tomato Seeds](#)

75 days. Solanum lycopersicum. Open Pollinated. German Johnson Regular Leaf Tomato. The plant produces good yields of 8 to 16 oz pinkish red beefsteak tomatoes. They are very sweet, meaty, juicy, and its superior flavor. Perfect for sandwiches, salads, and slicing. This is the regular leaf variety. The regular leaf strain is earlier and more productive than the potato leaf strain. It is the parent variety of the Mortgage Lifter Tomato. An excellent choice for home gardens. An heirloom variety from North Carolina and Virginia, USA. Indeterminate.



[TM839-10 - Giallo de Summer Tomato](#)

75 days. Solanum lycopersicum. Open Pollinated. The plant produces good yields of 6 to 10 oz bright yellow beefsteak tomatoes. They are very sweet, juicy, and flavorful. Perfect for sandwiches, salads, and slicing. Does extremely well in hot and humid regions. Heat Tolerant. An excellent choice for home gardens. Indeterminate.



[TM933-20 - Giant of Siebenburgen Tomato Seeds](#)

85 days. Solanum lycopersicum. Open Pollinated. Giant of Siebenburgen Tomato. The plant produces high yields of huge 1 lb red Oxheart tomatoes. It is so big, it is too much for one person to eat all at once. They have a rich tomato taste and are very sweet. Perfect for fresh eating, sandwiches, and salads. Also great for making tomato soup, puree, and sauce. An excellent choice for home gardens. A variety from Siebenburgen, Romania. Indeterminate.



[TM51-20 - Giant Oxheart Tomato Seeds](#)

90 days. Solanum lycopersicum. Open Pollinated. Giant Oxheart Tomato. The plant produces high yields of 1 to 2 lb pinkish-red tomatoes. They are firm, meaty, and very flavorful. Perfect for stuffing or making puree and sauces. These heart-shaped tomatoes grow in clusters of 2 to 7. An excellent choice for home gardens. A 100-year-old heirloom variety from the USA. United States Department of Agriculture, PI 645197. Indeterminate.



[TM466-20 - Giant Tree Tomato Seeds](#)

90 days. Solanum lycopersicum. Open Pollinated. Giant Tree Tomato. The plant produces high yields of 1 to 2 lb pinkish red tomatoes. They are very sweet, meaty, juicy, and flavorful. Perfect for sandwiches, salads, and slicing. The plant requires support, either staking or cages. Excellent choice for home gardens. United States Department of Agriculture, PI 644750. Indeterminate.



[TM348-20 - Glacier Tomato](#)

55 days. Solanum lycopersicum. Open Pollinated. This early maturing plant produces heavy yields of 2 to 3 oz red tomatoes. They are very sweet, juicy, and flavorful. Perfect for salads and snacks. Great tomato for the short growing season, cool nights, or cooler areas as it will set tomatoes at cooler temperatures. It continues to bear the entire season. Cold-Tolerant. A potato leaf variety. Suitable for container gardening. An excellent choice for home gardens. A variety from Sweden. Determinate.



[TM956-10 - Gladiator Tomato Seeds](#)

72 days. Solanum lycopersicum. (F1) Gladiator Tomato. This early maturing plant produces good yields of 8 oz red Roma tomatoes. They are very flavorful with a rich tomato flavor. Excellent for making paste, sauces, soups, salsa, and tomato ketchup. An excellent choice for home gardens. Indeterminate.



[TM610-10 - Glamour Tomato Seeds](#)

74 days. Solanum lycopersicum. Open Pollinated. Glamour Tomato. This early maturing plant produces high yields of 6 to 10 oz red tomatoes. They are meaty, very flavorful, and have thick walls. Perfect for sandwiches, salads, slicing, and canning. Crack Resistant. Excellent choice for home gardens and market growers. A variety from the USA. United States Department of Agriculture, PI 644749. Disease Resistant: V, FF, BS. Indeterminate.



[TM345-20 - Gold Medal Tomato](#)

75 days. Solanum lycopersicum. Open Pollinated. The plant produces good yields of 1 to 2 lb bi-colored orange-yellow beefsteak tomatoes with some rosy-red coloring. It has a rich old-fashioned tomato flavor. They are very sweet, juicy, and flavorful. Very lovely and beautiful tomato! Also known as Ruby Gold Tomato. Perfect for sandwiches, salads, and slicing. An excellent choice for home gardens. An heirloom variety. Indeterminate.



TM346-20 - Gold Nugget Tomato

56 days. Solanum lycopersicum. Open Pollinated. This early maturing bush-type plant produces heavy yields of 1 oz golden yellow cherry tomatoes. They are very flavorful. Perfect for salads and garnishes. The plant is usually the first to bear tomatoes and produces an abundant crop all season long. Winner of the prestigious British Horticultural Society (RHS) Award of Garden Merit. Suitable for container gardening. Grows in clusters. Crack-Resistant. An excellent choice for home gardens and market growers. A variety was developed by Dr. Jim Baggett at the Oregon State University, USA. United States Department of Agriculture, PI 645429. Diseases Resistant: V. Determinate.



TM245-20 - Golden Queen Tomato

75 days. Solanum lycopersicum. Open Pollinated. The plant produces good yields of 8 to 12 oz yellow tomatoes with pink blush markings. It has a rich old-fashioned tomato flavor. They are very sweet, juicy, and flavorful. Perfect for sandwiches, salads, and slicing. An excellent choice for home gardens. An 1882 heirloom variety. United States Department of Agriculture, PI 647518. Indeterminate.



TM715-10 - Golden Sweet Tomato

60 days. Solanum lycopersicum. (F1) This early maturing plant produces good yields of deep yellow grape tomatoes. They are very flavorful and stay firm and crisp. The tomatoes are very sweet. Perfect fresh eating right off the vine or in salads. Grows in clusters. Crack Resistant. An excellent choice for home gardens. Disease Resistant: F. Indeterminate.



TM668-20 - Goldie Tomato Seeds

75 days. Solanum lycopersicum. Open Pollinated. Goldie Tomato. The plant produces good yields of huge 1 lb to 2 lb golden yellow beefsteak tomatoes. They are very sweet, juicy, and flavorful. One of the best orange tomatoes. Perfect for sandwiches, salads, and slicing. It is a yellow version of the Giant Belgium Tomato. An excellent choice for home gardens. An heirloom variety. Indeterminate.



TM54-20 - Goliath Bush Tomato Seeds

68 days. Solanum lycopersicum. (F1) Goliath Bush Tomato. This early maturing bush plant produces high yields of 6 to 8 oz red tomatoes. They are very sweet and flavorful. Perfect for sandwiches, salads, and slicing. One of the best patio tomatoes around. Also great for containers and small gardens. If grown in containers, it can be brought indoors over winter to enjoy tomatoes all year. The plant is very productive averaging more than 100 tomatoes from each plant. An excellent choice for home gardens. Disease Resistant: VFN. Determinate.



TM401-20 - Goliath Cluster Tomato Seeds

65 days. Solanum lycopersicum. (F1) Goliath Cluster Tomato. This early maturing plant produces good yields of 4 to 5 oz red tomatoes. They are very flavorful. Perfect for sandwiches, salads, and slicing. These superior tomatoes grow in clusters and are the On-the-Vine type found in your supermarkets. It holds up well after picking and keeps its flavor for up to 2 weeks. Why pay high prices at the supermarket when you can grow them in your home garden? Excellent choice for home gardens and market growers. Disease Resistant: V, FF, TMV. Indeterminate.



[TM287-20 - Goliath Italian Tomato Seeds](#)

76 days. Solanum lycopersicum. (F1) Goliath Italian Tomato. The plant produces good yields of 8 oz bright red beefsteak tomatoes. They are very sweet, meaty, juicy, and flavorful. Perfect for sandwiches, salads, slicing, and Italian dishes. An excellent choice for home gardens. Disease Resistant: V, FF, N, A, TMV. Indeterminate.



[TM566-10 - Goliath Prime Beef Tomato Seeds](#)

70 days. Solanum lycopersicum. (F1) Goliath Prime Beef Tomato. This early maturing plant produces good yields of 10 oz red beefsteak tomatoes. They are sweet and very flavorful. Perfect for salads, slicing, and sandwiches. Excellent choice for home gardens and market growers. A variety from the USA. Disease Resistant: V, FF, St, TMV. Indeterminate.



[TM506-10 - Granddaddy Tomato Seeds](#)

72 days. Solanum lycopersicum. (F1) Granddaddy Tomato. This early maturing plant produces good yields of 10 to 16 oz brilliant red tomatoes. They are very sweet, meaty, juicy, and flavorful. Perfect for sandwiches, hamburgers, salads, and slicing. These blue ribbon prize winning tomatoes will be the topic of conversation when guests sit down to eat. One of the best quality giant beefsteak tomatoes available anywhere! Suitable for container gardening. An excellent choice for home gardens. Disease Resistant: V, F. Determinate.



[TM246-10 - Grandma Mary's Paste Tomato](#)

68 days. Solanum lycopersicum. Open Pollinated. This early maturing plant produces high yields of 6 to 10 oz red Roma tomatoes. They are very sweet, meaty, juicy, and flavorful. Perfect for making sauce, paste, and used in cooking. An excellent choice for home gardens. An heirloom variety from Jeanne Griffin of Sangerville, Maine, USA. Indeterminate.



[TM648-10 - Grandma's Pick Tomato](#)

78 days. Solanum lycopersicum. (F1) Plant produces good yields of very 10 to 14 oz bright red beefsteak tomatoes. This hybrid tomato has an heirloom-like flavor! Perfect for sandwiches, salads, and slicing. It is supposed to be high in Lycopene, and as an antioxidant, its consumption can reduce the risk of some cancers. This variety is suitable for greenhouse and open-field production. Always a great seller at Farmer's Markets! Excellent choice for home gardens, greenhouses, market growers, and open field production. Disease Resistant: V, F, N, St. Indeterminate.



[TM943-20 - Grandpa's Minnesota Tomato](#)

75 days. Solanum lycopersicum. Open Pollinated. The plant produces high yields of 1 oz red cherry tomatoes. One of the best-tasting cherry tomatoes with a mild sweet flavor! Perfect for salads and snacks. Grows in clusters of 6 to 8 tomatoes. An excellent choice for home gardens and market growers. A 1959 heirloom variety from the USA. Indeterminate.



[TM756-20 - Granny Cantrell's German Tomato Seeds](#)

85 days. Solanum lycopersicum. Open Pollinated. Granny Cantrell's German Tomato. The plant produces heavy yields of large 1 to 2 lbs pinkish-red beefsteak tomatoes. It has a rich old-fashioned tomato flavor. Perfect for sandwiches, salads, and slicing. Also great for eating fresh right off the vine, cooking, or canning. A tomato was grown by Lettie Cantrell of West Liberty in the 1940s. Her tomato was voted best-tasting flavor at the 2010 Monticello Tomato Tasting Fall Festival. The plant requires support, either staking or cages. Excellent choice for home gardens. An heirloom variety from Kentucky, USA. Indeterminate.



[TM322-20 - Grape Tomato](#)

60 days. Solanum lycopersicum. (F1) This early maturing plant produces heavy yields of bright red grape tomatoes. They are very sweet and flavorful. Perfect fresh eating right off the vine or in salads. They grow in clusters like grapes, hence where it gets its name. These have become popular supermarket items. Crack Resistant. Heat Tolerant. An excellent choice for home gardens. A variety from the USA. United States Department of Agriculture, PI 644934. Indeterminate.



TM932-10 - Grappoli d'Inverno Tomato Seeds

75 days. *Solanum lycopersicum*. Open Pollinated. Grappoli d'Inverno Tomato. This compact bushy plant produces high yields of 1 to 2 oz plum shaped red tomatoes that resemble little Roma tomatoes. They are firm and very tasty. Perfect for salads, snacks, and drying. Also great roasted and perfect for homemade pizza topping. The name Grappoli d'Inverno means bunches of winter grapes in Italian. An excellent keeper that can be stored for 4 to 6 weeks after picking. Italian farmers are known for hanging the fruit-covered vines in a cool place and storing them for months. The tomatoes stay fresh and can be harvested well into the winter. Everyone needs to try this variety at least once to experience fresh-tasting tomatoes all season long. An excellent choice for home gardens. A 1900s heirloom variety from Italy. Semi Indeterminate.



TM55-20 - Great White Beefsteak Tomato Seeds

85 days. *Solanum lycopersicum*. Open Pollinated. Great White Beefsteak Tomato. The plant produces excellent yields of 1 to 2 lb creamy white beefsteak tomatoes. They are very sweet, meaty with few seeds, juicy, and flavorful. Perfect in salads and for making sauces. It is known for being the largest and tastiest of the white tomato varieties. Low acidity variety. Crack Resistant. The tomatoes are protected from the sun by heavy foliage. An excellent choice for home gardens. An heirloom variety dating back to the 1860s. Indeterminate.



TM863-20 - Green Berkeley Tie Dye Tomato Seeds

70 days. *Solanum lycopersicum*. Open Pollinated. Green Berkeley Tie Dye Tomato. This early maturing plant produces high yields of 8 to 16 oz bi-color dark green beefsteak tomatoes with red and yellow stripes. It has a rich old fashioned tomato flavor. Perfect for sandwiches, salads, and slicing. A gourmet favorite of many chefs. Always a great seller at Farmer's Markets! An excellent choice for home gardens and specialty market growers. A variety was developed by Brad Gates of Wild Boar Farms of California, USA. Indeterminate.



TM867-10 - Green Doctors Tomato

75 days. *Solanum lycopersicum*. Open Pollinated. The plant produces high yields of ¾" green cherry tomatoes. They have a delicious sweet tomato flavor. This variety is named after Dr. Amy Goldman and Dr. Carolyn Male who have both written great tomato books. Low acidity variety. Grow in clusters. An excellent choice for home gardens. Indeterminate.



TM713-20 - Green Giant Tomato

85 days. *Solanum lycopersicum*. Open Pollinated. The plant produces good yields of 12 to 18 oz green tomatoes. They are smooth, beautiful, and have a spicy flavor. They are very sweet, juicy, and flavorful. Perfect for sandwiches, salads, slicing, and salsa. It stays pure green even when mature. The most productive and best-tasting variety in test trials. A potato leaf variety. Crack Resistant. The plant requires support, either staking or cages. An excellent choice for home gardens. Indeterminate.



TM56-20 - Green Grape Tomato

78 days. *Solanum lycopersicum*. Open Pollinated. The plant produces high yields of 1 to 2 oz yellow-green cherry tomatoes with lime-green color on the inside. They are very sweet, juicy, and flavorful. Stays green when mature and is about the size of a large grape. Some grow in the shape of a grape, others grow in the shape of a cherry tomato. Grows in clusters of 6 to 12. Perfect for making green ketchup, green tomato soups, sauces, and garnishes. Also great for salads and snacks. They are fully ripe when they start to turn a golden yellow. It is a cross of a Yellow Pear Tomato and an Evergreen Tomato. A favorite of farm markets and restaurants. An excellent choice for home gardens and specialty market growers. A 1983 heirloom variety was developed by Tom Wager of Tater Mater Seeds in Bakersfield, California, USA. Indeterminate.



TM812-20 - Green Tiger Tomato

70 days. *Solanum lycopersicum*. Open Pollinated. This early maturing plant produces high yields of 2" long by 1 ½" wide elongated bi-colored pale green/yellow striped cherry tomatoes with lime-green flesh. They are very sweet, juicy, and flavorful. Perfect for salads and garnishes. Chefs love this beautiful tomato with its superb flavor. It can be picked prematurely and allowed to ripen off the vine without compromising the exceptionally sweet flavor. Crack Resistant. Also known as the Lucky Tiger Tomato. Suitable for greenhouse production. An excellent choice for home gardens, greenhouses, and specialty market growers. An Artisan Tomato variety was developed by the Baia Nicchia Farm located at Sunol, California, USA. Indeterminate.



TM57-20 - Green Zebra Tomato

75 days. *Solanum lycopersicum*. Open Pollinated. The plant produces high yields of 2 to 4 oz bi-colored lime green tomatoes with dark green stripes. The flesh is bright green. It has a rich old-fashioned tomato flavor. Perfect for sandwiches, salads, slicing, canning, fried green tomatoes, salsas, stews, and making a delicious green tomato sauce. A favorite tomato of many high-class chefs. When the yellow tint appears, it's time to harvest. Crack Resistant. Heat-Tolerant. An excellent choice for home gardens and specialty market growers. A variety was developed by Tom Wagner of Washington State, USA. Indeterminate.



TM611-20 - Gregori's Altai Tomato

78 days. *Solanum lycopersicum*. Open Pollinated. The plant produces heavy yields of 8 to 12 oz pinkish-red beefsteak tomatoes. They are very sweet, juicy, and flavorful. Perfect for sandwiches, salads, and slicing. Excellent choice for home gardens. A variety from Siberia, Russia. Indeterminate.



TM539-10 - Gulf State Market Tomato Seeds

78 days. *Solanum lycopersicum*. Open Pollinated. Gulf State Market Tomato. The plant produces excellent yields of 6 to 8 oz pinkish-red tomatoes. They are smooth and very flavorful. A good all-around tomato. Perfect for sandwiches, salads, slicing, and canning. An old market variety that has proven itself for generations. Suitable for the Gulf states as well as other parts of the country. It excels in the Southern states where high heat and humidity are common during the summer. Crack Resistant. An excellent choice for home gardens and market growers. An heirloom variety dating back to the 1930s. United States Department of Agriculture, PI 270190. Indeterminate.



TM333-20 - Hawaiian Pineapple Tomato Seeds

93 day. *Solanum lycopersicum*. Open Pollinated. Hawaiian Pineapple Tomato. The plant produces high yields of 1 to 2 lb bicolored yellow orange beefsteak tomatoes with pinkish streaks. It is fruity, sweet, and rich in pineapple like flavor. Perfect for sandwiches, salads, slicing, and gourmet dishes. An excellent choice for home gardens. An heirloom variety from the USA. Indeterminate.



TM374-10 - Henderson's Winsall Tomato

90 days. *Solanum lycopersicum*. Open Pollinated. The plant produces good yields of large 1 to 2 lb pink beefsteak tomatoes. They are very sweet and flavorful. Perfect for sandwiches, salads, and slicing. One of the most favored tomato varieties and won approval from 40,000 people. Also known as the Number 400 Tomato and the Winsall Tomato. This is the original stock seed from the USDA Seed Bank. Excellent choice for home gardens. An heirloom from the Henderson Seed Company dating back to 1924. United States Department of Agriculture, PI 644794. Indeterminate.



TM853-10 - Homeslice Tomato

63 days. Solanum lycopersicum. (F1) This early maturing plant produces high yields of 5 to 6 oz bright red tomatoes. It has a rich old-fashioned tomato flavor. Perfect for sandwiches, salads, and slicing. Suitable for patios, containers, and small gardens. An excellent choice for home gardens. Disease Resistant: V, F. Determinate.



TM223-20 - Homesweet Tomato

70 days. Solanum lycopersicum. (F1) This early maturing plant produces good yields of 6 oz red tomatoes. They are very sweet, juicy, and flavorful. This is one of the sweetest tomatoes on the market. Perfect for sandwiches, salads, and slicing. Excellent choice for home gardens. Disease Resistant: V, FF, A, St. Determinate.



TM615-10 - Honey Tomato

76 days. Solanum lycopersicum. (F1) The plant produces high yields of 8 oz dark pink tomatoes. They are very sweet and flavorful. Perfect for sandwiches, salads, and slicing. Produces continuously all season long. Crack Resistant. An excellent choice for home gardens. Indeterminate.



TM202-20 - Hungarian Italian Tomato

80 days. Solanum lycopersicum. Open Pollinated. The plant produces heavy yields of 2 to 3 oz red pear-shaped tomatoes. They have a superb flavor. This variety is definitely one of the best varieties for making salsas, paste, sauces, or for canning. Grows in clusters of 4 tomatoes. Excellent choice for home gardens. Determinate.



TM68-10 - Husky Red Tomato

67 days. Solanum lycopersicum. (F1) This early maturing plant produces good yields of 5 to 7 oz red tomatoes. They are very sweet and flavorful. Perfect for sandwiches, salads, and slicing. This variety requires no pruning! Perfect for container gardening, patios, or small gardens where space is very limited! An excellent choice for home gardens. Disease Resistant: V, FF, A, St. Indeterminate.

TM866-10 - Indian Stripe Tomato

85 days. Solanum lycopersicum. Open Pollinated. The plant produces high yields of 8 to 10 oz bi-colored burgundy-purple tomatoes with faint green stripes that fade as tomatoes ripen. It has the exquisite taste of richness and complexity of fine wine. Perfect for sandwiches, salads, slicing, and making sauce. Similar to the Cherokee Purple but produces bigger tomatoes. Excellent choice for home gardens. An heirloom variety from Arkansas, USA. Indeterminate.



TM780-20 - Indigo Blue Beauty Tomato

80 days. Solanum lycopersicum. Open Pollinated. The plant produces high yields of 4 to 8 oz red beefsteak tomatoes with blue-black coloration. They are very sweet, juicy, and flavorful. Perfect for sandwiches, salads, and slicing. It is a cross between Beauty King and a blue tomato. Crack-Resistant. The plant has good foliage protecting tomatoes from sun-scald. Hold well on the vine until you are ready to pick them. Always a great seller at Farmer's Markets! Excellent choice for home gardens and farmer's markets. Indeterminate.



TM781-20 - Indigo Blue Berries Tomato

75 days. Solanum lycopersicum. Open Pollinated. The plant produces high yields of ½ to ¾ oz bi-colored purple-crimson red cherry tomatoes. The green fruit quickly develops purple tops and crimson bottoms, ripening to a stunning, almost black, with a brick-red bottom. They are very sweet and flavorful. Perfect for salads and garnishes. Always a great seller at Farmer's Markets! Excellent choice for home gardens and market growers. Indeterminate.



TM782-10 - Indigo Cherry Drops Tomato Seeds

65 days. Solanum lycopersicum. Open Pollinated. Indigo Cherry Drops Tomato. This early maturing plant produces heavy yields of 1 to 2 oz bicolor red cherry tomatoes with purple black markings. It has the same dark blue anthocyanin coloration over red flesh. They are very sweet and flavorful. Perfect for salads and garnishes. Expect huge yields of 500 to 1,000 tomatoes per plant. Crack Resistant. The plant has good foliage protecting tomatoes from sunscald. An excellent choice for home gardens. A variety was developed by Dr. Jim Myers at Oregon State University, USA. Indeterminate.



TM784-20 - Indigo Rose Tomato

75 days. Solanum lycopersicum. Open Pollinated. The plant produces heavy yields of 1 to 2 oz bi-colored red cherry tomatoes with deep purple tops. They are very sweet and flavorful. Perfect for salads and garnishes. The purple skin has high levels of anthocyanins, a disease-fighting compound that helps fight cancer, reduce inflammation, and slow the aging process. Grows in clusters of 6 to 8. Crack Resistant. Excellent choice for home gardens. A variety was developed by Jim Myers at Oregon State University, USA. This variety is protected by the Plant Variety Protection Act, #201100302. United States Department of Agriculture, PI 661213 PVPO. Disease Resistant: EB, LB. Semi-Determinate.



TM181-20 - Isis Candy Tomato Seeds

75 days. Solanum lycopersicum. Open Pollinated. Isis Candy Tomato. The plant produces high yields of 1 to 2 oz bi-colored golden cherry tomatoes with red marbling inside and outside. They are very sweet with a fruity flavor. Perfect for salads and snacks. Grows in clusters of 6 to 8. Excellent choice for home gardens. Indeterminate.



TM216-20 - Italian Giant Beefsteak Tomato

85 days. Solanum lycopersicum. Open Pollinated. The plant produces high yields of 1 lb deep red beefsteak tomatoes. They are very sweet, meaty, juicy, and flavorful. Perfect for salads, sandwiches, salsas, sauces, and Italian dishes. The plant requires support, either staking or cages. An excellent choice for home gardens. An heirloom variety from Italy was brought to the USA over 80 years ago. Indeterminate.



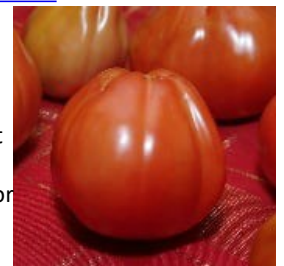
TM69-10 - Italian Gold Tomato

75 days. Solanum lycopersicum. Open Pollinated. The plant produces good yields of 3 to 6 oz golden-orange Roma tomatoes. They are very sweet, meaty, and flavorful. Perfect for paste, sauces, canning, and freezing. Grows in clusters of 6. An excellent choice for home gardens. Disease Resistant: V, FF. Determinate.



TM320-20 - Italian Red Pear Tomato Seeds

75 days. Solanum lycopersicum. Open Pollinated. Italian Red Pear Tomato. The plant produces high yields of 6 to 12 oz red pear-shaped tomatoes. They are very sweet and flavorful. Perfect for making Italian tomato sauce and paste. Excellent choice for home gardens. A variety from Italy. Indeterminate.



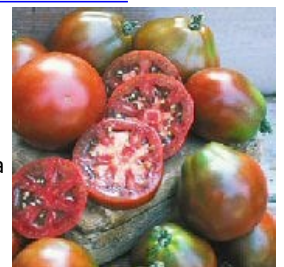
TM690-20 - Italian Sweet Tomato

85 days. Solanum lycopersicum. Open Pollinated. The plant produces good yields of 3 lb red beefsteak tomatoes. It has a rich old-fashioned tomato flavor. They are very sweet, juicy, and flavorful. Perfect for sandwiches, salads, and slicing. A potato leaf variety. An excellent choice for home gardens. Indeterminate.



TM455-20 - Japanese Black Trifele Tomato Seeds

75 days. Solanum lycopersicum. Open Pollinated. Japanese Black Trifele Tomato. The plant produces high yields of 4 to 6 oz mahogany tomatoes. It is one of the best tasting black tomatoes from Russia. It has a rich old fashioned tomato flavor. They are very sweet, meaty, juicy, and flavorful. Perfect for sandwiches, salads, slicing, and canning. The attractive tomatoes are the shape and size of a Bartlett pear. A potato leaf variety. Crack Resistant. A heirloom variety from Russia. Indeterminate.



TM887-10 - Jasper Tomato

2013 All-America Selections Winner!

60 days. Solanum lycopersicum. (F1) This early maturing plant produces high yields of ½ to ¾ oz red cherry tomatoes. It has a rich old-fashioned tomato flavor. Grows in clusters. Crack-Resistant. The plant requires support, either staking or cages. Excellent choice for home gardens and market growers. Disease Resistant: FF, EB, LB, SLS. Indeterminate.



TM396-20 - Jelly Bean Yellow Tomato

65 days. Solanum lycopersicum. (F1) This early maturing plant produces heavy yields of ½ to ¾ oz yellow grape tomatoes. They are very sweet and flavorful. Perfect for salads and snacks. The plant grows 15 to 30 tomatoes in clusters. The plant requires support, either staking or cages. They hold up well during shipment. An excellent choice for home gardens and market growers. Disease Resistant: V, FF, A, St. Indeterminate.



TM278-20 - Jetsetter Tomato Seeds

64 days. Solanum lycopersicum. (F1) Jetsetter Tomato. This early maturing plant produces high yields of 8 oz red tomatoes. They are very sweet, juicy, and flavorful with a rich old-fashioned tomato flavor. Perfect for sandwiches, salads, and slicing. This variety matures very early offering those in the South a great early harvest. It is one of the most disease resistant tomato varieties available. The type is seen in the fresh vegetable aisle of supermarkets! An excellent choice for home gardens, farmer's markets, market growers, open production, and commercial production. Disease Resistant: V, FF, N, A, St, TMV. Indeterminate.



TM508-10 - Julia Child Tomato

78 days. Solanum lycopersicum. Open Pollinated. The plant produces good yields of deep pink beefsteak tomatoes. They are very flavorful, sweet, and juicy. Perfect for sandwiches, salads, and slicing. An heirloom variety named after Julia Child, the "French Chef" and world-renowned cook. The tomato that was selected was the best-tasting tomato heirloom variety in the collection of tomatoes that was handed down for generations by different families from around the country. A potato leaf variety. Excellent choice for home gardens. An heirloom variety dating back to 1997. Indeterminate.

TM71-10 - Juliet Tomato Seeds

1999 All-America Selections Winner!

60 days. Solanum lycopersicum. (F1) Juliet Tomato. This early maturing plant produces high yields of 1 to 2 oz glossy red grape tomatoes. They are very sweet, juicy, and delicious with a rich tomato flavor. Perfect for salads, snacks, and gourmet dishes. They also make good stewing, sauce, and drying tomatoes. Grows in clusters from 12 to 18 like grapes. Heavy producers, about 350 tomatoes per plant. It holds on the vine longer than any other grape tomato. It has a good shelf life too, so you can keep them on hand without picking them every day. They are easy to pick and suitable for storage and shipping. Crack Resistant. The plant requires support, either staking or cages. Good quality tomatoes are used for greenhouse and commercial production. An excellent choice for home gardens, greenhouses, market growers, and open field production. Disease Resistant: St, EB, LB. Indeterminate.



TM145-20 - Kalman's Hungarian Pink Tomato

85 days. Solanum lycopersicum. Open Pollinated. The plant produces good yields of 6 to 8 oz pink tomatoes. They are very meaty and have a very outstanding rich tomato flavor. Perfect for making a wonderfully rich tomato paste, but can also be used as a slicer or in salads. Excellent choice for home gardens. An heirloom variety from Hungary. Indeterminate.



TM186-20 - Kellogg's Breakfast Tomato Seeds

85 days. Solanum lycopersicum. Open Pollinated. Kellogg's Breakfast Tomato. The plant produces excellent yields of 1 to 2 lb bright orange beefsteak tomatoes. They are very sweet, meaty, juicy, and flavorful. Perfect for sandwiches, salads, and slicing. An excellent choice for home gardens. An heirloom variety from Darrell Kellogg and originating from West Virginia, USA. Indeterminate.



TM214-20 - Kentucky Beefsteak Tomato

85 days. Solanum lycopersicum. Open Pollinated. The plant produces good yields of 1 to 2 lb orange beefsteak tomatoes. These giant tomatoes are meaty, juicy, and flavorful. Perfect for sandwiches, salads, and slicing. An excellent choice for home gardens. An heirloom variety from Kentucky, USA. Indeterminate.



TM74-20 - Koralik Tomato

55 days. Solanum lycopersicum. Open Pollinated. This early maturing plant produces heavy yields of ½ to ¾ oz bright red cherry tomatoes. They are sweet and flavorful. Perfect for salads and snacks. Grows in clusters of 6 to 8. Perfect for small gardens where space is very limited. They all ripen at the same time! Excellent choice for home gardens and market growers. An heirloom from Russia. Determinate.

TM372-20 - Large Red Cherry Tomato Seeds

75 days. Solanum lycopersicum. Open Pollinated. Large Red Cherry Tomato. The plant produces high yields of 1 to 1 ¼ oz red cherry tomatoes. They are sweet and flavorful. Perfect for salads and snacks. Grows in clusters. The plant requires support, either staking or cages. An excellent choice for home gardens. United States Department of Agriculture, PI 644828. Indeterminate.



TM689-10 - Large Pink Bulgarian Tomato

85 days. Solanum lycopersicum. Open Pollinated. The plant produces good yields of 8 to 16 oz dark pink beefsteak tomatoes. What sets this variety apart from other varieties is that it has the typical sweet flavor found in pink varieties, and also has a high acidity flavor, which makes an intense and excellent taste. Perfect for sandwiches, salads, and slicing. Excellent choice for home gardens. An heirloom variety from Bulgaria. Indeterminate.



TM249-20 - Legend Tomato Seeds

68 days. Solanum lycopersicum. Open Pollinated. Legend Tomato. This early maturing plant produces good yields of 6 to 9 oz glossy red tomatoes. They are very sweet and flavorful with few seeds. Perfect for sandwiches, salads, slicing, and canning. Plants do well in cool weather and hotter than normal weather. Perfect for container gardening or small gardens where space is very limited! An excellent choice for home gardens. A variety was developed by Dr. Jim Baggett at Oregon State University, USA. Disease Resistant: LB. Determinate.



TM931-10 - Lemon Boy Plus Tomato Seeds

75 days. Solanum lycopersicum. (F1) Lemon Boy Plus Tomato. The plant produces high yields of 8 oz bright lemon yellow beefsteak tomatoes. It is an eye-catching tomato with wonderful color and flavor. They are sweet and mild, meaty, juicy, and flavorful. Excellent for salads, slicing, salsas, and gourmet dishes. This variety has added disease resistance. The plant requires support, either staking or cages. An excellent choice for home gardens. Disease Resistant: V, F, FF, FFF, N, A, FCRR, LM, St, TMV. Indeterminate.



TM76-10 - Lemon Boy Tomato Seeds

72 days. Solanum lycopersicum. (F1) Lemon Boy Tomato. This early maturing plant produces high yields of 8 oz bright lemon yellow tomatoes. It is an eye-catching tomato with wonderful color and flavor. They are sweet and mild, meaty, juicy, and flavorful. Excellent for salads, slicing, salsas, and gourmet dishes. The plant requires support, either staking or cages. An excellent choice for home gardens. Disease Resistant: V, F, N, A, St. Indeterminate.



TM77-20 - Lillian's Yellow Tomato Seeds

85 days. Solanum lycopersicum. Open Pollinated. Lillian's Yellow Tomato. The plant produces good yields of 16 to 20 oz bright yellow beefsteak tomatoes. They are very sweet, meaty, juicy, and full of tomato flavor with very few seeds. It is considered one of the finest tasting yellow heirloom tomatoes. Perfect for sandwiches, salads, and slicing. A potato leaf variety. Always a great seller at Farmer's Markets! An excellent choice for home gardens and market growers. An heirloom variety from Lillian Bruce of Manchester, Tennessee, USA. Indeterminate.

TM838-20 - Little Napoli Tomato

63 days. Solanum lycopersicum. (F1) This early maturing plant produces high yields of 2 oz bright red pear-shaped tomatoes. It has a rich tomato flavor. They are very sweet, meaty, and juicy. Perfect for canning, and making rich tomato sauce, salsa, soup, or ketchup. Perfect for container gardening, patios, hanging baskets, or small gardens where space is very limited! Excellent choice for home gardens. Disease Resistant: V, F. Determinate.



TM911-10 - Louisiana Gulf State Tomato

78 days. Solanum lycopersicum. Open Pollinated. The plant produces excellent yields of 6 to 8 oz pink tomatoes. They are smooth and very flavorful. A good all-around tomato. Perfect for sandwiches, salads, slicing, and canning. An old market variety that has proven itself for generations. Suitable for the Gulf states as well as other parts of the country. It excels in the Southern states where high heat and humidity are common during the summer. Low acid tomato. Crack-Resistant. Heat-Resistant. Humidity Tolerant. An excellent choice for home gardens and market growers. Louisiana Gulf State is an improved Gulf State Market Tomato. An heirloom variety from Louisiana, USA. Indeterminate.



TM414-10 - Little Mama Tomato Seeds

70 days. Solanum lycopersicum. Open Pollinated. Little Mama Tomato. This early maturing plant produces heavy yields of 3 to 4 oz red Roma tomatoes. They are meaty, juicy, and flavorful. Perfect for making salsa, sauce, puree, and paste. Grows in clusters. Excellent choice for home gardens. Indeterminate.



TM885-10 - Lizzano Tomato Seeds

2011 All-America Selections Winner!

65 days. Solanum lycopersicum. (F1) Lizzano Tomato. This early maturing plant produces high yields of ½ to 1 oz bright red cherry tomatoes. They are very sweet, juicy, and flavorful. Perfect for snacks, dips, and salads. Suitable for container gardening, patios, hanging baskets, or small gardens where space is very limited! Excellent choice for home gardens. Disease Resistant: LB. Semi-Determinate.



TM922-10 - Lucky Tiger Tomato

70 days. Solanum lycopersicum. This early maturing plant produces high yields of 2" long elongated bi-color cherry tomatoes. These beautiful tomatoes are yellow and green striped with a red blush and a golden-green interior and a very flavorful. Great in salads, vegetable platters, and gourmet dishes. Crack Resistant. Suitable for home gardens. A variety from the USA. Indeterminate.



TM903-10 - Madame Marmande Tomato Seeds

72 days. Solanum lycopersicum. (F1) Madame Marmande Tomato. This early maturing plant produces high yields of 10 to 14 oz red beefsteak tomatoes. They are very sweet, juicy, and flavorful. Perfect for salads, sandwiches, and gourmet dishes. Crack Resistant. An excellent choice for home gardens. Disease Resistant: V, F, A. Indeterminate.



TM923-10 - Maglia Rosa Tomato

55 days. Solanum lycopersicum. This early maturing plant produces high yields of 3" long egg-shaped light pink bi-color cherry tomatoes. These beautiful tomatoes turn mottled pink when mature and are very flavorful. For the peak flavor, harvest the tomatoes just when they turn to a light pink color. It is named after the mottled pink jersey worn by the lead racer in the Tour of Italy. Great in salads, vegetable platters, and gourmet dishes. Excellent for pots, patio, containers, and hanging baskets. Suitable for home gardens, market growers, and open field production. A variety from the USA. Semi-Determinate.



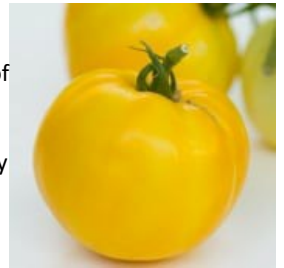
TM619-10 - Magnus Tomato Seeds

79 days. Solanum lycopersicum. Open Pollinated. Magnus Tomato. The plant produces good yields of 6 to 8 oz dark pink tomatoes. They are very sweet, juicy, and flavorful. Perfect for sandwiches, salads, and slicing. A potato leaf variety. Crack Resistant. Also known as Livingston's Magnus Tomato. Excellent choice for home gardens. An heirloom variety from the Historic Livingston Collection dating back to the 1900s. Disease Resistant: BER. Indeterminate.



TM535-20 - Manyel Tomato

75 days. Solanum lycopersicum. Open Pollinated. The plant produces high yields of 5 to 10 oz golden-yellow tomatoes. One of the best tasting yellow tomatoes on the market. They are mild and juicy with a tangy citrus-like flavor. Perfect for adding flavor and color to salads, garnishes, or culinary creations. Grows in clusters of 3 to 5. Also known as Manyel Moons Tomato. The name of this variety means "many moons". Low acidity variety. Excellent choice for home gardens. A Native American heirloom variety. Indeterminate.



TM520-20 - Margo Tomato

70 days. Solanum lycopersicum. (F1) This early maturing plant produces good yields of 6 oz shiny red tomatoes. The tomatoes hold their flavor off the vine well. This plant is perfect for smaller size gardens. Determinate. Disease Resistant: VFF.



TM934-20 - Maria Nagy Giant Tomato

85 days. Solanum lycopersicum. Open Pollinated. The plant produces high yields of huge 16 oz globe-shaped tomatoes. The flavor is just incredible. They have a rich tomato taste and are very sweet. Perfect for fresh eating, sandwiches, and salads. The plant is so productive you can harvest 17.6 lbs of tomatoes from one plant! An excellent choice for home gardens and Farmer's Markets. A variety from Maria Nagy of Turda, Romania. Indeterminate.



TM402-20 - Marianna's Peace Tomato

80 days. Solanum lycopersicum. Open Pollinated. The plant produces good yields of 1 to 2 lb pinkish-red beefsteak tomatoes. One of the best-tasting tomatoes on the market. The tomato is very delicious with a rich old tomato flavor. Perfect for salads, slices, and sandwiches. A potato leaf variety. Suitable for hydroponics gardening. Excellent choice for home gardens. An heirloom variety from the Marianne Worschsch Tibbetts family who were farmers from Bohemia, now the Czech Republic. Indeterminate.



TM222-20 - Marizol Purple Tomato

80 days. Solanum lycopersicum. Open Pollinated. The plant produces good yields of 8 to 16 oz purplish-pink beefsteak tomatoes. They are very smooth, sweet, and flavorful. Perfect for salads, slicing, and sandwiches. An excellent choice for home gardens. An 1800s heirloom variety from Germany's Black Forest. Indeterminate.



TM268-20 - Marmande Tomato

67 days. Solanum lycopersicum. Open Pollinated. This early maturing plant produces high yields of 6 to 10 oz red tomatoes. An old-time favorite that has the full rich tomato flavor. They are very sweet, meaty, and juicy. Perfect for salads, sandwiches, and gourmet dishes. Widely grown in the field and greenhouses. Excellent choice for home gardens and market growers. An heirloom variety was developed by Vilmorin Seed Company, France in 1897. United States Department of Agriculture, PI 157850. Disease Resistant: V, F, A. Semi-Determinate.



TM568-10 - Marmara Tomato

75 days. Solanum lycopersicum. (F1) The plant produces good yields of 5 to 7 oz bright red tomatoes. They are sweet and flavorful. Perfect for salads, slicing, and sandwiches. This is a modern version of the Marmande tomato. An excellent choice for home gardens and market growers. Disease Resistant: V, F, TMV. Indeterminate.



TM340-20 - Matina Tomato Seeds

58 days. Solanum lycopersicum. Open Pollinated. Matina Tomato. This early maturing plant produces good yields of 2 to 4 oz red tomatoes. The taste is so good and it normally wouldn't be found in huge beefsteak varieties. Perfect for canning, salads, salsa, slicing, sandwiches, and sauce. The fact is that it ripens up to a full month earlier than many beefsteak varieties. It is a very early-producing variety that bears continuously throughout the season. It does well in cool summer night regions like the Pacific Northwest. The plant has good foliage protecting tomatoes from sun-scald. Grows in clusters. A potato leaf variety. Suitable for hydroponics gardening. An excellent choice for home gardens. An heirloom variety from Germany. Indeterminate.



TM80-20 - Matt's Wild Cherry Tomato

60 days. Solanum lycopersicum. Open Pollinated. This early maturing plant produces high yields of small ¼ to ½ oz red cherry tomatoes. They are very sweet and the flavor is superior. Perfect for salads and snacks. Tomatoes grow in clusters. Suitable for hydroponics gardening. An excellent choice for home gardens. A variety from Hidalgo, Mexico. Disease Resistant: EB, LB. Indeterminate.



TM235-10 - Mega Tom Tomato Seeds

79 days. Solanum lycopersicum. Open Pollinated. Mega Tom Tomato. The plant produces heavy yields of huge 2 lb red tomatoes. They are very sweet, juicy, and flavorful. Perfect for sandwiches, burgers, salads, and slicing. Impress your neighbors by growing a huge tomato. An excellent choice for home gardens. Indeterminate.



TM551-20 - Mexico Midget Tomato Seeds

65 days. Solanum lycopersicum. Open Pollinated. Mexico Midget Tomato. This early maturing plant produces heavy yields of tiny ¼ to ½ oz red cherry tomatoes. It is very sweet and very flavorful. Perfect for salads or snacks. An excellent choice for home gardens. An heirloom variety from Mexico. Indeterminate.



TM250-20 - Mexico Tomato

80 days. Solanum lycopersicum. Open Pollinated. The plant produces large yields of 1 to 2 lb dark pink beefsteak tomatoes. They are very sweet, meaty, juicy, and flavorful. Perfect for salads, slicing, and sandwiches. The plant keeps producing continuously throughout the season. Always a great seller at Farmer's Markets! An excellent choice for home gardens and market growers. An heirloom variety brought into the USA by a Mexican family. Indeterminate.



TM868-20 - Mint Julep Tomato Seeds

75 days. Solanum lycopersicum. Open Pollinated. Mint Julep Tomato. The plant produces high yields of 1 ½ to 4 oz bicolored chartreuse green pear shaped tomatoes with bright yellow stripes. They have a pleasant tomato taste with a nice sweet overall flavor. Perfect for salads, garnishes, or culinary creations. A variation of the Green Zebra Tomato. Also known as the Michael Pollan Tomato. A Wild Boar Series tomato. The plant produces huge yields, up to 5 gallons from one plant! Excellent choice for home gardens. Indeterminate.



TM621-10 - Momotaro Tomato Seeds

70 days. Solanum lycopersicum. (F1) Momotaro Tomato. This early maturing plant produces high yields of 6 to 8 oz pinkish-red tomatoes. They are very flavorful, rich, and sweet, with just the right amount of acid. This very high-quality tomato is perfectly smooth with no blemishes or imperfections! Perfect for salads, slicing, and sandwiches. Grows in clusters 6 to 7. This is the most popular tomato in Japan. It is named after a hero in Japanese folklore. Crack Resistant. Heat Tolerant. It has a long shelf life and is a good choice for shipping. Good quality tomatoes are used for commercial production. An excellent choice for home gardens, market growers, and open field production. This variety is one of the best tomatoes ever developed by the Takii Seed Company in Japan. Disease Resistant: V, N, FF, St, ToMV. Indeterminate.



TM260-20 - Moneymaker Tomato Seeds

75 days. Solanum lycopersicum. Open Pollinated. Moneymaker Tomato. The plant produces heavy yields of 4 to 6 oz bright red tomatoes. They are very sweet, juicy, and flavorful. Perfect for salads, slicing, and sandwiches. This variety does well in hot and humid climates. Suitable for greenhouse production. An excellent choice for home gardens. An heirloom variety from Bristol, England, UK, dating back to the early 1900s. United States Department of Agriculture, PI 286255. Indeterminate.



[TM894-20 - Monticello Tomato](#)

73 days. Solanum lycopersicum. (F1) This early maturing plant produces high yields of 4 to 5 oz red Roma tomatoes. Tomatoes are firm and very flavorful. Perfect for canning and sauce. This variety has been shown to grow exceptionally in the southeast and in mountain regions. An excellent choice for home gardens, market growers, and open field production. Disease Resistance: V, F, N, St, BS, TSWV. Determinate. (Pelleted Seeds)



[TM547-20 - Moonglow Tomato Seeds](#)

85 days. Solanum lycopersicum. Open Pollinated. Moonglow Tomato. The plant produces high yields of 6 to 8 oz bright orange tomatoes. They are very sweet, meaty, and very flavorful. It is considered by many tomato lovers, as the best texture and flavor of an orange tomato. Great for adding color and taste to salads and gourmet dishes. It has a good shelf life. An excellent choice for home gardens. An heirloom variety. Indeterminate.



[TM83-20 - Moskvich Tomato Seeds](#)

60 days. Solanum lycopersicum. Open Pollinated. Moskvich Tomato. This early maturing plant produces good yields of 4 to 6 oz deep red tomatoes. They are very flavorful with a rich tomato taste. Perfect for salads, slicing, sandwiches, canning, and cooking. Crack Resistant. Does well in cold conditions. Cold Tolerant. Moskvich translates to - a person living in Moscow. Also known as Moskovich Tomato. An excellent choice for home gardens, greenhouses, market growers, and open field production. An heirloom variety developed in the early 1970s at the N. I. Vavilov Institute of Plant Industry, Moscow, U.S.S.R. Disease Resistant: LB. Indeterminate.



[TM84-10 - Mountain Fresh Plus Tomato Seeds](#)

79 days. Solanum lycopersicum. (F1) Mountain Fresh Plus Tomato. The plant produces good yields of 8 to 12 oz red tomatoes. They are very sweet, very firm, smooth, and flavorful. Perfect for salads, slicing, and sandwiches. Crack Resistant. The plant has good foliage protecting tomatoes from sunscald. Does well in cool or wet climates. It is the most widely grown market tomato in the East and Midwest. Good-quality tomatoes are used for commercial production. Great fresh market or chain store type. An excellent choice for home gardens, market growers, and open field production. A variety was developed by Dr. Randy Gardner at North Carolina State University, NC, USA. Disease Resistant: V, FF, N, ALS, GW, BER. Determinate.



[TM749-10 - Mountain Magic Tomato Seeds](#)

70 days. Solanum lycopersicum. (F1) Mountain Magic Tomato. This early maturing plant produces high yields of large 2 oz bright red cherry tomatoes. They are very sweet and flavorful. Perfect fresh eating right off the vine or in salads. They are known as Campari tomatoes and command high prices at specialty markets and supermarkets. The tomatoes hold well on the plant and hold up very well after harvest. Grows in clusters of 7 to 8. Crack Resistant. An excellent choice for home gardens, farmer's markets, market growers, open production, and commercial production. Disease Resistant: V, FFF, A, EB, LB. Indeterminate. (Pelleted Seeds)



[TM830-10 - Mountain Merit Tomato](#)

2014 All-America Selections Winner!
75 days. Solanum lycopersicum. (F1) The plant produces high yields of 8 to 10 oz deep red tomatoes. They are very flavorful. Perfect for sandwiches, salads, slicing, and canning. Crack Resistant. Excellent choice for home gardens and market growers. Disease Resistant: V, FFF, N, LB, TSWV. Determinate.



[TM85-20 - Mountain Pride Tomato Seeds](#)

77 days. Solanum lycopersicum. (F1) Mountain Pride Tomato. The plant produces good yields of 6 to 8 oz red tomatoes. They are firm and flavorful. It was bred especially for mountain regions and higher elevation areas. Does well in the Southwest region of the country. Crack Resistant. Excellent choice for home gardens and market growers. A variety was developed by North Carolina State University, NC, USA. United States Department of Agriculture, PI 647558. Disease Resistant: V, FF, A, St, BS. Determinate.



[TM909-10 - Mountain Rouge Tomato](#)

2019 All-America Selections Winner!

72 days. Solanum lycopersicum. (F1) This early maturing plant produces heavy yields of 12 to 14 oz beefsteak pink tomatoes. Some tomatoes grow up to 2 lbs size! One of the best-tasting tomatoes on the market. It has a delicious flavor with just the right balance of acid and sugar. Perfect for sandwiches, salads, slicing, and canning. Performs especially well in cooler climates. An excellent choice for home gardens and market growers. Disease Resistant: F, V, N, LB. Indeterminate. **(Pelleted Seeds)**



[TM86-20 - Mountain Spring Tomato Seeds](#)

69 days. Solanum lycopersicum. (F1) Mountain Spring Tomato. This early maturing plant produces high yields of 10 to 12 oz bright red tomatoes. They are firm and flavorful. Perfect for salads, slicing, and sandwiches. The plant has good foliage protecting tomatoes from sunscald. Suitable for the Southeastern part of the country. Crack Resistant. Excellent choice for home gardens and market growers. A variety was developed by Dr. Randy Gardner in 1991 at the North Carolina State University, NC, USA. Disease Resistant: V, FF, ALS, BER. Determinate.



[TM87-20 - Mr Stripey Tomato Seeds](#)

80 days. Solanum lycopersicum. Open Pollinated. Mr Stripey Tomato. The plant produces good yields of large 1 to 2 lb bicolored orange yellow beefsteak tomatoes with red stripes. No two tomatoes are ever the same. They are very sweet, juicy, and flavorful. Perfect for salads, slicing, and sandwiches. Low acidity variety. The plant requires support, either staking or cages. An excellent choice for home gardens. An heirloom from Virginia, USA, dating back to the 1800s. Indeterminate.



[TM686-20 - Mr Underwood's Pink German Giant Tomato Seeds](#)

85 days. Solanum lycopersicum. Open Pollinated. Mr Underwood's Pink German Giant Tomato. The plant produces excellent yields of 1 ½ to 2 lb pink beefsteak tomatoes. They are sweet and have a rich tomato flavor. Perfect for salads, slicing, and sandwiches. Excellent choice for home gardens. An heirloom variety from Bulgaria. Indeterminate.



[TM295-20 - Napoli Tomato Seeds](#)

79 days. Solanum lycopersicum. Open Pollinated. Napoli Tomato. The plant produces heavy yields of 3 to 6 oz red Italian Roma paste tomatoes. They are very sweet, meaty, juicy, and flavorful. Perfect for making sauce, ketchup, and paste. Also great for salads, slicing, sandwiches, soups, stir-fries, canning, and freezing. An excellent choice for home gardens. United States Department of Agriculture, PI 355110. Determinate.



[TM90-20 - Nebraska Wedding Tomatos Seeds](#)

85 days. Solanum lycopersicum. Open Pollinated. Nebraska Wedding Tomato. The plant produces heavy yields of 10 to 16 oz apricot orange tomatoes. They are very juicy and flavorful. Perfect for salads, garnishes, or culinary creations. Serve sliced on a platter for a delicious gourmet dish. Crack Resistant. To maximize yield potential, either stake or use cages. Mrs. Englert said "Nebraskan brides were given seeds of this tomato as a wedding gift. It was said to have been brought from MN by pioneers in the late 1800s via covered wagons. And it thrived in cold, windy Nebraska." An excellent choice for home gardens. A 1980 heirloom variety from Mrs. Englert of Sandpoint, Idaho, USA. Determinate.



[TM623-20 - New Big Dwarf Tomato Seeds](#)

60 days. Solanum lycopersicum. Open Pollinated. New Big Dwarf Tomato. This early maturing plant produces high yields of 8 to 16 oz deep pink beefsteak tomatoes. They are very sweet, juicy, and flavorful. Perfect for salads, slicing, and sandwiches. The plant stays small while producing large and delicious tomatoes. It is a cross of a Ponderosa and a Dwarf Champion. Suitable for containers, pots, small gardens, and square-foot gardens where space is very limited. An excellent choice for home gardens. An heirloom variety was developed by Isbell's Seed Company back in 1909. United States Department of Agriculture, PI 645154. Determinate.



[TM91-20 - New Zealand Pink Paste Tomato](#)

90 days. Solanum lycopersicum. Open Pollinated. The plant produces good yields of pink tomatoes. It is unlike any other paste tomato as it has a fabulous flavor. Perfect for making thick sauce and paste. Also great for slicing. Does well in adverse weather. Heat Tolerant. Drought Tolerant. Also known as New Zealand Pink Pear Tomato. An excellent choice for home gardens. An heirloom variety from New Zealand. United States Department of Agriculture, PI 433016. Indeterminate.



[TM408-20 - Nyagous Tomato Seeds](#)

85 days. Solanum lycopersicum. Open Pollinated. Nyagous Tomato. The plant produces good yields of 6 to 8 oz dark brownish-red tomatoes. They are flavorful and blemish-free! Perfect for salads, garnishes, or culinary creations. They are special black tomatoes. Grows in clusters of 3 to 6. Crack Resistant. An excellent choice for home gardens and market growers. An heirloom variety from Reinhard Kraft of Germany. Indeterminate.



[TM731-20 - Oaxacan Jewel Tomato Seeds](#)

85 days. Solanum lycopersicum. Open Pollinated. Oaxacan Jewel Tomato. The plant produces good yields of 6 to 16 oz bicolor yellow beefsteak tomatoes with red streaks. It is one of the most strikingly beautiful bicolor tomatoes. It is gorgeous when sliced open to reveal the brilliant red marbling within. The tomato has a fruity flavor. Perfect for salads, slicing, salsa, and sandwiches. Also known as Joya de Oaxaca Tomato. An excellent choice for home gardens and market growers. An heirloom from Oaxacan, Mexico. Indeterminate.



[TM96-20 - Old German Tomato Seeds](#)

85 days. Solanum lycopersicum. Open Pollinated. Old German Tomato. The plant produces good yields of 1 ½ to 2 lb bicolor yellow beefsteak tomatoes with red and pink stripes. It is one of the best slicing tomatoes on the market. They are delicious, beautiful, very sweet, meaty, juicy, and flavorful. Perfect for salads, garnishes, or culinary creations. The plant requires support, either staking or cages. A potato leaf variety. An excellent choice for home gardens. A Mennonite heirloom from Virginia's Shenandoah Valley, USA. United States Department of Agriculture, PI 647528. Indeterminate.



TM233-20 - Omar's Lebanese Tomato

80 days. Solanum lycopersicum. Open Pollinated. The plant produces excellent yields of 1 to 2 lb pink beefsteak tomatoes. They are very sweet, meaty, juicy, and flavorful. Perfect for sandwiches, burgers, salads, and slicing. Excellent choice for home gardens. An heirloom variety from Omar Saab of Lebanon. Indeterminate.



TM301-20 - Orange Banana Tomato

85 days. Solanum lycopersicum. Open Pollinated. The plant produces good yields of 4" long by 2" wide orange banana-shaped tomatoes. They are sweet and very flavorful. Perfect for salads, salsas, paste, and gourmet dishes. Also great for making a nice orange sauce. Great drying variety. An excellent choice for home gardens. A variety from Marina Danilenko of Moscow, Russia. Indeterminate.



TM596-20 - Orange Cherry Tomato Seeds

75 days. Solanum lycopersicum. Open Pollinated. Orange Cherry Tomato Seeds. The plant produces high yields of ½ to ¾ oz orange cherry tomatoes. They are very sweet and flavorful. Perfect for salads, garnishes, or culinary creations. Adds color to your salads. Kids Love Them. Also known as Sweet Orange Cherry Tomato. An excellent choice for home gardens. Indeterminate.



TM841-20 - Orange Jazz Tomato Seeds

85 days. Solanum lycopersicum. Open Pollinated. Orange Jazz Tomato. The plant produces high yields of 12 to 16 oz bi-colored orange beefsteak tomatoes with yellow stripes. They are very sweet, juicy, and flavorful. The tomato has an outstanding flavor with just a hint of peach sweetness. Perfect for salads, garnishes, or culinary creations. An Artisan Series variety. Suitable for specialty markets and roadside stands. An excellent choice for home gardens and specialty market growers. Indeterminate.



TM97-20 - Orange Oxheart Tomato Seeds

85 days. Solanum lycopersicum. Open Pollinated. Orange Oxheart Tomato. The plant produces good yields of 1 to 3 lb orange tomatoes. They are very sweet, meaty, juicy, and flavorful with few seeds. Perfect for salads, slicing, sandwiches, and sauces. An excellent choice for home gardens. An heirloom variety from Virginia, USA. Indeterminate.



TM327-10 - Orange Russian 117 Tomato

85 days. Solanum lycopersicum. Open Pollinated. The plant produces good yields of 1 to 2 lb bi-colored yellow-orange tomatoes with streaks of red. These heart-shaped tomatoes are very delicious, meaty, and have few seeds. Perfect for salads, garnishes, or culinary creations. It is a cross between Russian 117 and Georgia Streak. An excellent choice for home gardens. A variety from Russia. Indeterminate.



TM552-10 - Orange Sunshine Tomato

58 days. Solanum lycopersicum. (F1) Early maturing plant produces heavy yields of ½ to ¾ oz bright orange cherry tomatoes. They are firm, sweet, and very flavorful. Perfect fresh eating right off the vine or in salads. Excellent choice for home gardens and market growers. Disease Resistant: V, F. Indeterminate.



TM347-20 - Oroma Tomato

70 days. Solanum lycopersicum. Open Pollinated. This early maturing plant produces heavy yields of 5" long red tomatoes. They are meaty and very flavorful. Perfect for making thick tomato paste and sauce. Also great for making ketchup and canning. Excellent choice for home gardens. Disease Resistant: V. Determinate.



TM881-10 - Pamella Tomato Seeds

80 days. Solanum lycopersicum. (F1) Pamella Tomato. The plant produces high yields of 6 to 8 oz red tomatoes. They are very sweet, juicy, and flavorful. Perfect for salads, slicing, and sandwiches. One of the most disease resistant tomato varieties. It is one of the best for greenhouses and open-field production. An excellent choice for home gardens, greenhouses, market growers, and open field production. Indeterminate.

Disease Resistance: V, FF, N, TMV, TSWV, TYLCV.



TM710-20 - Pantano Romanesco Tomato

85 days. Solanum lycopersicum. Open Pollinated. The plant produces high yields of 8 to 12 oz deep red tomatoes. It has a rich tomato flavor. Perfect for salads, slicing, sandwiches, and sauce. An excellent choice for home gardens. An heirloom variety from Italy. Indeterminate.



TM102-10 - Park's Whopper Improved Tomato Seeds

65 days. Solanum lycopersicum. (F1) Park's Whopper Improved Tomato. This early maturing plant produces good yields of 14 oz red tomatoes. They are very sweet, meaty, juicy, and flavorful. These are beautiful big tasty red tomatoes that are excellent for salads, burgers, and sandwiches. Crack Resistant. The plant requires support, either staking or cages. An excellent choice for home gardens and market growers. Disease Resistant: V, FF, N, TMV. Indeterminate.



TM912-20 - Patio Choice Yellow Tomato

2017 All-America Selections Winner!

60 days. Solanum lycopersicum. (F1) This early maturing plant produces high yields of 1/2 oz bright yellow cherry tomatoes. They have a sweet flavor. Perfect for salads, snacks, and vegetable platters. Great for making dried tomatoes too. Very productive producing over 100 tomatoes on the compact plant! suitable for containers, patios, and small gardens. An excellent choice for home gardens. Determinate.



TM836-10 - Patio Plum Tomato

60 days. Solanum lycopersicum. Open Pollinated. This early maturing plant produces high yields of red grape tomatoes. They have excellent flavor and are perfect for snacking or salads. Grows in clusters of 3 to 5. Suitable for container gardening and patios. An excellent choice for home gardens. Determinate.



TM103-10 - Patio Tomato Seeds

70 days. Solanum lycopersicum. (F1) Patio Tomato. This early maturing plant produces excellent yields of 3 to 4 oz red tomatoes. They are very sweet and flavorful. A dwarf tomato that proves good things grows in small spaces. It is one of America's most popular varieties ever for growing on patios, decks, courtyards, or wherever garden space is limited. Great for school projects. Kids love them! Because of the weight of the abundance of tomatoes the plant produces, it requires 2 ft support, either staking or cages. Always a great seller at Farmer's Markets! An excellent choice for home gardens and market growers. Disease Resistant: F, A, St. Determinate.



TM914-10 - Patty's Striped Beefsteak Tomato Seeds

85 days. Solanum lycopersicum. Open Pollinated. Patty's Striped Beefsteak Tomato. The plant produces good yields of 10 to 16 oz orange yellow beefsteak tomatoes streaked with red. They are very sweet, juicy, meaty, and very flavorful. An Award winning for best tasting tomato. Perfect for salads, sandwiches, sauces, and garnishes. Very beautiful when sliced. Similar to the Big Rainbow Tomato but has much higher yields and better flavor. An excellent choice for home gardens. An heirloom variety from the USA. Indeterminate.



TM330-20 - Paul Robeson Tomato

75 days. Solanum lycopersicum. Open Pollinated. The plant produces good yields of 8 to 12 oz brick-red tomatoes. This is one of the highly regarded black tomatoes that have a rich tomato flavor. Free from cracking and blemishes. Crack Resistant. Perfect for sandwiches, salads, and slicing. Named in honor of the famous opera singer and equal rights advocate. An excellent choice for home gardens. An heirloom variety from Russia. Indeterminate.



TM354-20 - Pearson Improved Tomato

80 days. Solanum lycopersicum. Open Pollinated. The plant produces good yields of 7 oz deep red tomatoes. They are very flavorful, uniform, and attractive. It has a rich old-fashioned tomato flavor. Perfect for salads, slicing, sandwiches, and canning. Crack-Resistant. A popular variety used by the California tomato industry as a shipping and canning variety. Excellent choice for home gardens, market growers, and open field production. A 1942 variety was developed by Dr. Oscar Pearson back in 1942. United States Department of Agriculture, PI 644839. Determinate.



TM176-20 - Peron Tomato

68 days. Solanum lycopersicum. Open Pollinated. This early maturing plant produces high yields of 6 to 8 oz deep red tomatoes. They are very sweet, meaty, solid, and very delicious. Perfect for sandwiches, salads, slicing, and canning. A great canning variety as the skin comes off easily without emersion in boiling water. A tomato is said to be so insect resistant, or Sprayless, that it never needs spraying! High in Vitamin C. It is the World's only sprayless Tomato. Also known as Peron Sprayless Tomato. Crack Resistant. Drought Tolerant. The plant requires support, either staking or cages. Suitable for greenhouse production. An excellent choice for home gardens, greenhouses, market growers, and open field production. A 1951 variety was developed by Professor Abelardo Piovano of the National University of Argentina. United States Department of Agriculture, PI 209974. Semi-Determinate.



TM165-20 - Persimmon Tomato Seeds

75 days. Solanum lycopersicum. Open Pollinated. Persimmon Tomato. The plant produces high yields of 14 to 18 oz golden-orange beefsteak tomatoes. They have a mild sweet flavor, are meaty, and have few seeds. One of the best-tasting orange tomatoes. Perfect for salads, garnishes, or culinary creations. They also make gorgeous soups and sauces. Low acidity variety. Excellent choice for home gardens. An heirloom variety from Russia dating back to the 1800s. Indeterminate.



TM935-20 - Petrillo Tomato

70 days. Solanum lycopersicum. Open Pollinated. This early maturing plant produces high yields of 4 oz red ruffled beefsteak tomatoes. It is similar to the Costoluto Genovese but matures earlier. The flavor is excellent. Perfect diced and thrown fresh into pasta or salad. The ripe tomatoes keep well on the plant, and in the kitchen. Very few seeds. A 1950s excellent choice for home gardens and Farmer's Markets. An heirloom variety from Puerto Rico. Indeterminate.



TM902-10 - Phoenix Tomato Seeds

72 days. Solanum lycopersicum. (F1) Phoenix Tomato. This early maturing plant produces heavy yields of 8 to 12 oz red tomatoes. They are very flavorful. Perfect for sandwiches, salads, slicing, and canning. It was developed for South Texas and places with similar growing conditions. Heat Tolerant. Crack Resistant. An excellent choice for home gardens and market growers. Disease Resistant: V, A, St. Determinate.



TM487-20 - Pilgrim Tomato Seeds

68 days. Solanum lycopersicum. (F1) Pilgrim Tomato. This early maturing plant produces good yields of 7 oz red tomatoes. They are very flavorful. Perfect for salads, slicing, and sandwiches. Crack Resistant. It grows well in the mid-Atlantic region, Northeast region, and southern Canada. Excellent choice for home gardens and market growers. Determinate.



TM343-20 - Pineapple Tomato Seeds

85 days. Solanum lycopersicum. Open Pollinated. Pineapple Tomato. The plant produces high yields of 2 lb bicolored yellow beefsteak tomatoes with red streaks both on the outside and inside. They are very sweet, meaty, juicy, and flavorful. It has a rich old-fashioned tomato flavor. Perfect for salads, slicing, and sandwiches. The plant has good foliage protecting tomatoes from sun-scald. An excellent choice for home gardens. An heirloom variety from the USA. Indeterminate.



TM763-20 - Pink Berkeley Tie Dye Tomato Seeds

70 days. Solanum lycopersicum. Open Pollinated. Pink Berkeley Tie Dye Tomato Seeds. This early maturing plant produces high yields of 8 to 12 oz bi-colored dark pink wine color beefsteak tomatoes with green stripes and deep brick-red interior flesh. It has a rich tomato flavor. The sweet rich flavor repeatedly beats Cherokee Purple in taste tests. Perfect for salads, slicing, sandwiches, garnishes, or culinary creations. A Wild Boar Series variety. An excellent choice for home gardens. Indeterminate.



TM279-20 - Pink Girl Tomato

76 days. Solanum lycopersicum. (F1) The plant produces heavy yields of 6 to 8 oz pink tomatoes. They are very sweet, juicy, and flavorful. Perfect for salads, slicing, and sandwiches. Crack Resistant. Excellent choice for home gardens. Disease Resistant: V, F, A, St. Indeterminate.



TM924-20 - Pink Jazz Tomato

85 days. Solanum lycopersicum. Open Pollinated. The plant produces good yields of large 1 lb beefsteak bi-color pink tomatoes with yellow stripes. These beautiful tomatoes turn pink when mature and are very sweet. Great in salads, sandwiches, and slicing. Suitable for home gardens, market growers, and open field production. A variety from the USA. Indeterminate. Disease Resistant.



TM100-20 - Pink Oxheart Tomato Seeds

85 days. Solanum lycopersicum. Open Pollinated. Pink Oxheart Tomato. The plant produces good yields of 1 to 2 lb pink heart-shaped tomatoes. They are firm, meaty, solid, and very flavorful. Perfect for salads, slicing, and sandwiches. An excellent choice for home gardens. An heirloom dating back to 1925. United States Department of Agriculture, PI 270202. Indeterminate.



TM628-20 - Pink Ping Pong Tomato

75 days. Solanum lycopersicum. Open Pollinated. The plant produces high yields of 1 to 3 oz extra-large pink cherry tomatoes. They are about the size and shape of a ping pong ball and are very delicious and juicy. Perfect for salads, garnishes, culinary creations, and canning. The plant requires support, either staking or cages. Excellent choice for home gardens. An heirloom variety from New York, USA. Indeterminate.



TM501-10 - Plum Dandy Tomato Seeds

68 days. *Solanum lycopersicum*. (F1) Plum Dandy Tomato. This early maturing plant produces high yields of red plum-shaped tomatoes. They are firm, very sweet, and very flavorful. A quality paste and saladette tomato. Grows in clusters. Excellent choice for home gardens and market growers. Disease Resistant: EB. Indeterminate.



TM804-10 - Plum Regal Tomato Seeds

76 days. *Solanum lycopersicum*. (F1) Plum Regal Tomato. The plant produces high yields of 3 to 4 oz deep red plum tomatoes. It has a bright red interior and a superior flavor. Perfect for making tomato sauce, paste, salsa, and canning. The plant has good foliage protecting tomatoes from sun-scald. Crack Resistant. An excellent choice for home gardens, farmer's markets, and market growers. Disease Resistant: V, FF, EB, LB, TSWV. Determinate.



TM625-20 - Polar Star Tomato

65 days. *Solanum lycopersicum*. Open Pollinated. This early maturing plant produces high yields of 3 to 4 oz red tomatoes. It has a sweet and tangy flavor. Perfect for salads, slicing, and sandwiches. A variety developed in Alaska for cold-weather regions. Cold Tolerant. Excellent choice for home gardens. Determinate.



TM158-10 - Pompeii Tomato Seeds

76 days. *Solanum lycopersicum*. Open Pollinated. Pompeii Tomato. The plant produces heavy yields of red Roma tomatoes. They are very flavorful. Perfect for making tomato sauce, puree, paste, and canning. Excellent choice for home gardens. A variety from Italy. Indeterminate.



TM383-20 - Ponderosa Red Tomato

85 days. *Solanum lycopersicum*. Open Pollinated. The plant produces high yields of 1 lb red beefsteak tomatoes. They are very sweet, meaty, juicy, and flavorful with few seeds. It has a rich old-fashioned tomato flavor. Perfect for salads, slicing, sandwiches, and canning. Low acidity variety. An excellent choice for home gardens. An heirloom variety. United States Department of Agriculture, PI 634828. Indeterminate.



TM824-20 - Pork Chop Tomato

75 days. *Solanum lycopersicum*. Open Pollinated. The plant produces heavy yields of 10 to 12 oz bi-colored yellow beefsteak tomatoes with green stripes. It has a rich tomato flavor with hints of citrus. Perfect for salads, sandwiches, garnishes, culinary creations, or a sunny sauce. It has delicate skin, which is sure to please tomato lovers with sensitive stomachs. A Wild Boar Series variety. An excellent choice for home gardens. Indeterminate.



TM110-20 - Porter Improved Tomato

75 days. *Solanum lycopersicum*. Open Pollinated. The plant produces heavy yields of 3 to 4 oz red tomatoes. They are very flavorful. Perfect for making tomato juice, sauce, salads, and canning. A variety was developed by Porter & Son Seed Company for Southern regions like Texas. It is larger than Porter Tomato but with the same setting ability. Does extremely well in high heat and low humidity. Grows in clusters of 6. Also known as Porter's Pride Tomato. An excellent choice for home gardens and market growers. United States Department of Agriculture, NSL 34407. Disease Resistant: V, F. Indeterminate.



TM390-20 - Porter Tomato

78 days. *Solanum lycopersicum*. Open Pollinated. The plant produces heavy yields of 2 to 4 oz deep red plum tomatoes. They are very flavorful. Perfect for making tomato juice, sauce, salads, and canning. Crack-Resistant. The plant has good foliage protecting tomatoes from sun-scald. It was developed by Porter & Son Seed Company for Southern regions like Texas. Porter is an old-time drought-tolerant favorite in the Southwest. An excellent choice for home gardens and market growers. United States Department of Agriculture, PI 270281. Disease Resistant: V, F. Indeterminate.



TM627-10 - Prairie Fire Tomato

70 days. Solanum lycopersicum. (F1) This early maturing plant produces high yields of 3" long by 1" wide elongated grape shaped deep red tomatoes. It is very sweet and tied for First Place in taster test with a Brix of 10. Perfect for snacks, salads, sandwiches, and slicing, Excellent choice for home gardens. Indeterminate.



TM111-20 - Principe Borghese Tomato Seeds

75 days. Solanum lycopersicum. Open Pollinated. Principe Borghese Tomato. The plant produces heavy yields of 1 to 2 oz bright red plum tomatoes. It has a rich tomato flavor. They are meaty, very flavorful, and have little juice and very few seeds. Perfect for making sauce, puree, and paste. Great for thickening tomato sauce. Also one of the best sun drying tomatoes on the market. Suitable for fresh use, canning, and freezing too. Grows in clusters. Crack Resistant. Drought Tolerant. The plant requires support, either staking or cages. Also known as Prince Borghese Tomato. Always a great seller at Farmer's Markets! An excellent choice for home gardens and specialty market growers. An heirloom variety from Tuscany, Italy dating back to 1910. United States Department of Agriculture, PI 639215. Determinate.



TM512-10 - Prize of the Trials Tomato Seeds

80 days. Solanum lycopersicum. Open Pollinated. Prize of the Trials Tomato. The plant produces high yields of 2 oz orange cherry tomatoes. They are very flavorful. Perfect for salads, garnishes, or culinary creations. Crack Resistant. Does well in dry hot regions. Drought Tolerant. Heat Tolerant. An excellent choice for home gardens. Indeterminate.



TM112-20 - Pruden's Purple Tomato Seeds

72 days. Solanum lycopersicum. Open Pollinated. Pruden's Purple Tomato. This early maturing plant produces good yields of 12 to 16 oz dark pink beefsteak tomatoes. They are very sweet, meaty, juicy, and flavorful with few seeds. One of the best tasting varieties compares with the Brandywine tomato. It has even ranked higher at times in taste trials. Perfect for salads, slicing, and sandwiches. A potato leaf variety. Crack Resistant. Heat Tolerant. Cold Tolerant. An excellent choice for home gardens. An heirloom variety. Indeterminate.



TM684-20 - Purple Brandy Tomato Seeds

75 days. Solanum lycopersicum. Open Pollinated. Purple Brandy Tomato. The plant produces good yields of 8 to 16 oz deep pink purple beefsteak tomatoes. It has a rich tomato flavor as fine as the Brandywine tomato. Perfect for salads, slicing, and sandwiches. This is a cross between the Brandywine and the Marizol Purple. A potato leaf variety. Also known as Purple Brandywine Tomato, Marizol Brandywine Tomato, and Marizol Bratka Tomato. Excellent choice for home gardens. An heirloom variety. Indeterminate.



TM875-20 - Purple Bumble Bee Tomato Seeds

70 days. Solanum lycopersicum. Open Pollinated. Purple Bumble Bee Tomato. This early maturing plant produces high yields of 1 to 2 oz purplish-red cherry tomatoes with green stripes. They are very sweet and flavorful. Perfect for salads, garnishes, or culinary creations. An Artisan Series variety. Suitable for hydroponics gardening. Crack Resistant. Excellent choice for home gardens. Indeterminate.



TM926-10 - Purple Cherry Tomato

85 days. Solanum lycopersicum. Open Pollinated. The plant produces high yields of dark purple cherry tomatoes. They are very sweet and are perfect for gourmet dishes, salads, snacks, and vegetable platters. Very productive producing over 100 tomatoes. An excellent choice for home gardens. An heirloom variety from the USA. Indeterminate.



TM304-20 - Purple Russian Tomato

80 days. Solanum lycopersicum. Open Pollinated. The plant produces high yields of 5 to 7 oz oblong purplish-red plum tomatoes. They are meaty and very flavorful. One of the best-tasting purplish-red tomatoes! Perfect for salads, sandwiches, slicing, salsa, sauce, puree, paste, and canning. Also known as Ukrainian Purple Tomato. Crack Resistant. Always a great seller at Farmer's Markets! An excellent choice for home gardens and specialty market growers. An heirloom variety from Ukraine. Indeterminate.



TM113-20 - Quarter Century Tomato Seeds

85 days. Solanum lycopersicum. Open Pollinated. Quarter Century Tomato. The plant produces good yields of 10 to 12 oz red beefsteak tomatoes. They are very flavorful. Perfect for salads, slicing, sandwiches, or canning. Heat Tolerant. An heirloom variety from the USA dating back to 1901. Indeterminate.



TM240-10 - Queen of Hearts Tomato

80 days. Solanum lycopersicum. (F1) The plant produces good yields of 6 oz bright red tomatoes. Tomatoes grow in clusters of 4 on the vining plant. The tomatoes are very tasty and are perfect for sandwiches and slicing. Excellent variety for the home garden. A variety from the USA. Indeterminate.



TM814-10 - Rapunzel Tomato Seeds

70 days. Solanum lycopersicum. (F1) Rapunzel Tomato. This early maturing plant produces good yields of 1 oz bright red cherry tomatoes. They are sweet, juicy, and very flavorful. Perfect fresh eating right off the vine, in salads, or vegetable trays. Grows in clusters up to 40. An excellent choice for home gardens. A variety from the USA, Indeterminate.



TM361-20 - Red Calabash Tomato

85 days. Solanum lycopersicum. Open Pollinated. The plant produces good yields of 2 to 4 oz red tomatoes. It looks like miniature beefsteak tomato. They are very sweet and flavorful. Perfect for salads, garnishes, or culinary creations. Excellent choice for home gardens. An heirloom variety from Chiapas, Mexico. Indeterminate.



TM658-10 - Red Grape Tomato Seeds

59 days. Solanum lycopersicum. (F1) Red Grape Tomato. This early maturing plant produces good yields of ½ to ¾ oz bright red grape tomatoes. They are very flavorful. Perfect fresh eating right off the vine or in salads. Grows in clusters of 12 to 16. This variety is becoming the top choice for grape production. This variety can be grown in the greenhouse or open field for commercial production. An excellent choice for home gardens, greenhouses, market growers, and open field production. Disease Resistant: F, N, TMV. Indeterminate.



TM598-20 - Red Oxheart Tomato

85 days. Solanum lycopersicum. Open Pollinated. The plant produces good yields of 1 to 2 lb red tomatoes. These heart-shaped tomatoes are sweet, juicy, and very flavorful. Perfect for salads and making tomato sauce. An excellent choice for home gardens. An heirloom variety dating back to the 1920s. Indeterminate.



[TM444-10 - Red Plum Tomato Seeds](#)

78 days. *Solanum lycopersicum*. Open Pollinated. Red Plum Tomato. The plant produces high yields of deep red plum tomatoes. It has a rich tomato flavor. Perfect for making tomato sauce, paste, and canning. Grows in clusters. An excellent choice for home gardens. United States Department of Agriculture, PI 645003. Indeterminate.



[TM892-20 - Red Pride Tomato](#)

78 days. *Solanum lycopersicum*. (F1) Plant produces high yields of 10 to 14 oz red tomatoes. They are sweet and flavorful. It has a rich old-fashioned tomato flavor. Perfect for salads, slicing, and sandwiches. The plant has good foliage protecting tomatoes from sun-scald. Suitable for containers, patios, or small gardens where space is very limited! Does well in the Northeast parts of the country. Excellent choice for home gardens and market growers. Disease Resistant: V, FF, A, St. Determinate.



[TM631-10 - Red Rocket Tomato Seeds](#)

60 days. *Solanum lycopersicum*. Open Pollinated. Red Rocket Tomato. This early maturing plant produces heavy yields of 8 to 10 oz bright red tomatoes. They are very flavorful. Perfect for sandwiches, salads, slicing, and canning. These plants take off like a rocket producing loads of tomatoes early in the season. Excellent choice for home gardens. Determinate.



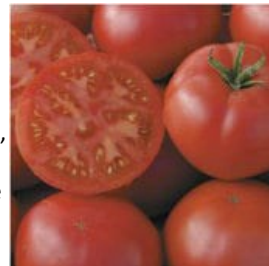
[TM117-20 - Red Russian Tomato Seeds](#)

78 days. *Solanum lycopersicum*. Open Pollinated. Red Russian Tomato. The plant produces high yields of 2 to 5 oz red tomatoes. They are sweet, juicy, and flavorful. Perfect for salads and slicing. It has become the most popular New Zealand home garden variety. Tolerates low night temperatures. Cold Tolerant. Excellent choice for home gardens. An heirloom variety was developed by the Levin Agricultural Research Centre, New Zealand, in 1943. Indeterminate.



[TM577-20 - Redfield Beauty Tomato Seeds](#)

80 days. *Solanum lycopersicum*. Open Pollinated. Redfield Beauty Tomato. The plant produces high yields of 6 to 12 oz red tomatoes. They are very sweet, meaty, juicy, and flavorful. Perfect for salads, slicing, and sandwiches. Grows in clusters of 3 to 5. The plant has good foliage protecting tomatoes from sun-scald. Low acidity variety. Also known as Hastings Redfield Beauty Tomato. An excellent choice for home gardens. An heirloom variety was introduced in 1889 by H.G. Hastings & Co. of Interlachen, Florida, USA. United States Department of Agriculture, PI 645105. Indeterminate.



[TM683-10 - Richardson Tomato Seeds](#)

85 days. *Solanum lycopersicum*. Open Pollinated. Richardson Tomato. The plant produces good yields of 1 to 3 lb pink beefsteak tomatoes. It has a rich old fashioned tomato flavor. Perfect for sandwiches, burgers, salads, and slicing. Excellent choice for home gardens. An heirloom variety from the Richardson family of Tennessee, USA. Indeterminate.



TM300-20 - Riesentraube Tomato Seeds

75 days. Solanum lycopersicum. Open Pollinated. Riesentraube Tomato. The plant produces heavy yields of ¾ to 1 oz red cherry pear-shaped tomatoes. They are sweet, meaty, and very flavorful. The flavor is similar to larger beefsteak varieties. It has the rich old-fashioned tomato flavor that is missing in today's cherry tomatoes. Perfect for salads and snacks. Grows in a cluster of 20 to 40. The name translates to "Giant Bunch of Grapes". The plant produces 200 to 300 tomatoes. Grown by Pennsylvania Dutch as early as 1856. An excellent choice for home gardens. An heirloom from Germany dating back to 1855. United States Department of Agriculture, PI 647531. Indeterminate.



TM672-10 - Rocky Tomato

90 days. Solanum lycopersicum. Open Pollinated. The plant produces heavy yields of 8 to 12 oz red plum-shaped tomatoes. They have thick walls, are meaty, and are very flavorful. One of the largest and best-flavored sauce tomatoes. Perfect for salads and making sauce, puree, and paste. Excellent choice for home gardens and market growers. An heirloom variety. Indeterminate.



TM392-20 - Roma VF Tomato

78 days. Solanum lycopersicum. Open Pollinated. The plant produces heavy yields of 2 to 4 oz bright red plum-shaped tomatoes. They have a thick wall, are meaty, and very flavorful with very few seeds. Perfect for salads and making, sauce, puree, paste, soup, ketchup, tomato juice, and canning. A good quality tomato is used for commercial production. An excellent choice for home gardens, greenhouses, market growers, and open field production. United States Department of Agriculture, PI 644859. Disease Resistant: V, F. Determinate.



TM299-20 - Roman Candle Tomato Seeds

85 days. Solanum lycopersicum. Open Pollinated. Roman Candle Tomato. The plant produces good yields of 5 oz yellow banana-shaped tomatoes. They are very flavorful and have very few seeds. Perfect for making salsa, sauce, and culinary creations. Always a great seller at Farmer's Markets! An excellent choice for home gardens and market growers. United States Department of Agriculture, PI 639216. Indeterminate.

TM362-20 - Ropreco Tomato

65 days. Solanum lycopersicum. Open Pollinated. This early maturing plant produces high yields of red Roma tomatoes. They have thick walls, are meaty, and very flavorful. Perfect for making sauce, puree, paste, and canning. An excellent choice for home gardens. An heirloom variety from Italy. Disease Resistant: F, BER. Determinate.



TM667-20 - Rosalita Tomato

60 days. Solanum lycopersicum. Open Pollinated. This early maturing plant produces high yields of ½ to ¾ oz rosy pink grape tomatoes. They are sweet and flavorful. Perfect for salads and snacks. It is the only pink grape tomato and it is the size and shape of a red grape. Grows in clusters. Excellent choice for home gardens. Indeterminate.



TM115-10 - Rose de Berne Tomato Seeds

75 days. *Solanum lycopersicum*. Open Pollinated. Rose de Berne Tomato. The plant produces heavy yields of 7 to 8 oz dark rose-pink tomatoes. They are very sweet, meaty, juicy, and flavorful. In France, Germany, and Switzerland, it is considered to be the best-flavored tomato. Perfect for salads, slicing, and sandwiches. Crack Resistant. Excellent choice for home gardens. An heirloom variety from Switzerland. Disease Resistant: LB. Indeterminate.



TM164-20 - Rose Tomato Seeds

78 days. *Solanum lycopersicum*. Open Pollinated. Rose Tomato. The plant produces good yields of 10 oz rose-pink beefsteak tomatoes. They are very sweet, meaty, juicy, and very flavorful. It has a rich tomato flavor. The flavor is excellent and is considered to rival the Brandywine tomato. Perfect for salads, slicing, and sandwiches. It is a cross between a Brandywine and Rutgers tomato. Crack Resistant. An excellent choice for home gardens. An Amish heirloom variety from New Holland, Pennsylvania, USA. Indeterminate.



TM428-20 - Royal Chico Tomato Seeds

72 days. *Solanum lycopersicum*. Open Pollinated. Royal Chico Tomato. This early maturing plant produces high yields of 3 ½ oz bright red pear-shaped tomatoes. They have thick walls, are meaty, and are very flavorful with few seeds. Perfect for salads and making sauce, puree, paste, and canning. An excellent processing variety. Does extremely well in humid regions. Excellent choice for home gardens, market growers, and open field production. Disease Resistant: V, F, N. Determinate.



TM682-20 - Royal Hillbilly Tomato

85 days. *Solanum lycopersicum*. Open Pollinated. The plant produces high yields of 1 lb dark pink beefsteak tomatoes. They are very sweet, meaty, juicy, and flavorful. Perfect for salads, slicing, and sandwiches. Excellent choice for home gardens. An heirloom variety developed by Darrell Merrell who bred it from several variations of the Hillbilly tomato. Indeterminate.



TM633-20 - Royesta Tomato

70 days. *Solanum lycopersicum*. (F1) This early maturing plant produces high yields of 6 to 8 oz red tomatoes. They are sweet and flavorful. Perfect for salads, slicing, sandwiches, and canning. Excellent choice for home gardens and market growers. Disease Resistant: FF, N, TMV. Indeterminate.



TM946-10 - Ruby Crush Tomato Seeds

65 days. *Solanum lycopersicum*. (F1) Ruby Crush Tomato. This early maturing strong compact plant produces high yields of 1 ¼ wide by 1 ½ long bright red grape tomatoes. They are very sweet and flavorful. Perfect fresh eating right off the vine or in salads. They hold well on the plant. The plant has good foliage protecting tomatoes from sunscald. They are very easy to pick. No pruning is required. The plant requires minimal support. Crack Resistant. Suitable for containers and small gardens. An excellent choice for home gardens. Disease Resistant: F, FF, FCRR, ToMV. Determinate.



[TM840-10 - Rugged Boy Tomato](#)

75 days. *Solanum lycopersicum*. (F1) The plant produces high yields of 6 to 8 oz red tomatoes. They are very sweet, meaty, juicy, with exceptional flavor. Perfect for salads, slicing, burgers, and sandwiches. Suitable for containers, patios, or small gardens where space is very limited! One of the most disease-resistant tomato varieties. An excellent choice for home gardens, farmer's markets, and market growers. Disease Resistant: V, FF, N, St, LB, TMV. Determinate.



[TM702-10 - Russian 117 Tomato Seeds](#)

90 days. *Solanum lycopersicum*. Open Pollinated. Russian 117 Tomato. The plant produces good yields of 1 lb red heart-shaped tomatoes. They are very sweet, meaty, juicy, and excellent flavor with few seeds. Perfect for sandwiches, burgers, salads, and slicing. Excellent choice for home gardens. A heirloom variety from Russia. Indeterminate.



[TM310-20 - Russian Rose Tomato Seeds](#)

78 days. *Solanum lycopersicum*. Open Pollinated. Russian Rose Tomato. The plant produces excellent yields of 12 to 16 oz rose pink beefsteak tomatoes. They are sweet, very meaty, juicy, and flavorful. Perfect for salads, slicing, and sandwiches. It is a very pretty tomato, as pretty as a rose. Always a great seller at Farmer's Markets. An excellent choice for home gardens and market growers. An heirloom variety from Novorossiyyk, Russia. Indeterminate.



[TM954-10 - Rutgers 250 Tomato Seeds](#)

75 days. *Solanum lycopersicum*. Open Pollinated. Rutgers 250 Tomato. The plant produces high yields of large 7 oz red globe shaped tomatoes. The tomatoes are very sweet, juicy, and flavorful. Excellent for salads, sandwiches, and slicing. It is better tasting version of the classic New Jersey Rutgers Tomato. It was developed at Rutgers New Jersey Agricultural Experiment Station from the original Rutgers tomato to celebrate the 250th anniversary of Rutgers University. An excellent choice for home gardens. A variety from the USA. Indeterminate.



[TM297-20 - Rutgers Select Tomato Seeds](#)

78 days. *Solanum lycopersicum*. Open Pollinated. Rutgers Select Tomato. The plant produces heavy yields of 5 to 8 oz red tomatoes. They are sweet and very flavorful. Perfect for salads, slicing, sandwiches, sauce, paste, and canning. An excellent choice for home gardens, market growers, and open field production. An heirloom variety developed at Rutgers University, New Jersey, USA, in the 1920s. United States Department of Agriculture, PI 645198. Disease Resistant. V, F, A, St. Indeterminate.



[TM660-20 - San Marzano 2 Tomato Seeds](#)

85 days. *Solanum lycopersicum*. Open Pollinated. San Marzano 2 Tomato. The plant produces high yields of 5 to 6 oz bright red plum tomatoes. They have thick walls, are meaty, and are very flavorful. Perfect for making sauce, puree, paste, and canning. This is the standard tomato used to make tomato sauce in Italy. The plant has good foliage protecting tomatoes from sun-scald. Good quality tomato used for commercial production. An excellent choice for home gardens, market growers, and open field production. A variety from Italy. Disease Resistant: V, F. Indeterminate.



[TM445-20 - San Marzano Determinate Tomato Seeds](#)

80 days. Solanum lycopersicum. Open Pollinated. San Marzano Determinate Tomato. The plant produces heavy yields of 4 to 5 oz bright red tomatoes. They have thick walls, are meaty, and are very flavorful. Perfect for making salsa, sauce, puree, paste, drying, and canning. It is known as the greatest sauce tomato in the world. Crack Resistant. Low acidity variety. The plant requires support, either staking or cages because of the heavy yields. An excellent choice for home gardens. An heirloom variety from Italy. Determinate.



[TM152-20 - San Marzano Indeterminate Tomato Seeds](#)

80 days. Solanum lycopersicum. Open Pollinated. San Marzano Indeterminate Tomato. The plant produces heavy yields of 4 to 5 oz bright red tomatoes. They have thick walls, are meaty, and are very flavorful. Perfect for making salsa, sauce, puree, paste, drying, and canning. It is known as the greatest sauce tomato in the world. Crack Resistant. Low acidity variety. The plant requires support, either staking or cages. An excellent choice for home gardens. An heirloom variety from Italy. United States Department of Agriculture, PI 237137. Indeterminate.



[TM661-20 - San Marzano Nano Tomato Seeds](#)

85 days. Solanum lycopersicum. Open Pollinated. San Marzano Nano Tomato. The plant produces good yields of 2 to 3 oz red tomatoes. They have thick walls, are meaty, and are very flavorful. Perfect for salsas, salads, and for making sauce, puree, paste, and canning. The plant has good foliage protecting tomatoes from sunscald. Always a great seller at Farmer's Markets. An excellent choice for home gardens and market growers. A variety from Italy. Determinate.



[TM321-10 - San Marzano Redorta Tomato Seeds](#)

78 days. Solanum lycopersicum. Open Pollinated. San Marzano Redorta Tomato. The plant produces good yields of large 8 oz red plum tomatoes. They have thick walls, are meaty, and are very flavorful. It is much larger than the San Marzano. Perfect for making salsa, sauce, puree, paste, and canning. It is named after a mountain, Pizzo Redorta in Bergamo. An excellent choice for home gardens. An heirloom variety from Tuscany, Italy. Indeterminate.



[TM680-10 - Sandul Moldovan Tomato Seeds](#)

85 days. Solanum lycopersicum. Open Pollinated. Sandul Moldovan Tomato. The plant produces high yields of 1 lb red beefsteak tomatoes. What makes this tomato so special is its exceptional flavor. It has a high sugar and high acid balance. Perfect for salads, slicing, and sandwiches. Excellent choice for home gardens. An heirloom variety from the Sandul family of Moldova. Indeterminate.



[TM446-20 - Santiam Tomato](#)

65 days. Solanum lycopersicum. Open Pollinated. This early maturing plant produces heavy yields of 5 oz red tomatoes. They are very sweet, juicy, and flavorful with very few seeds. Perfect for salads, slicing, and sandwiches. It is a cross between a Severianin and a Starshot. Suitable for cooler climates and locations with shorter growing seasons. Excellent choice for home gardens. A variety was developed by Dr. James R. Baggett in 1984 at Oregon State University, Oregon, USA. Disease Resistant: V, F. Determinate.



TM275-20 - Sasha Altai Tomato

57 days. Solanum lycopersicum. Open Pollinated. This early maturing plant produces good yields of 4 to 6 oz bright red tomatoes. They are very sweet, meaty, juicy, and flavorful with an award-winning complex flavor. Perfect for salads, slicing, sandwiches, canning, and making tomato juice. Sets well even during cold evenings. One of the best tomatoes in all of Siberia. Cold Tolerant. Suitable for cooler coastal climates and high altitudes. Excellent choice for home gardens. An heirloom variety from Irkutsk, Siberia, Russia. Determinate.



TM541-20 - Saucy Tomato Seeds

85 days. Solanum lycopersicum. Open Pollinated. Saucy Tomato. The plant produces heavy yields of 3 oz red plum-shaped tomatoes. It has a rich tomato flavor. They are sweet, meaty, and very flavorful with very few seeds. Perfect for making sauces, puree, paste, and salsas. They are easy to pick and peel. The tomatoes can be easily shaken from the plants when they mature. Grows in clusters. Excellent choice for home gardens. An heirloom variety was developed by Dr. James R. Baggett in 1993 at Oregon State University, Oregon, USA. Disease Resistant: BER. Determinate.



TM120-20 - Sausage Tomato Seeds

78 days. Solanum lycopersicum. Open Pollinated. Sausage Tomato. The plant produces good yields of large 6" long red tomatoes. They are meaty and very flavorful. Perfect for making ketchup, sauce, puree, paste, and canning. An excellent choice for home gardens. An heirloom variety from the USA. United States Department of Agriculture, PI 647533. Indeterminate.



TM284-20 - Scotia Tomato Seeds

60 days. Solanum lycopersicum. Open Pollinated. Scotia Tomato. This early maturing plant produces high yields of 4 oz bright red tomatoes. They are sweet and flavorful. Perfect for sandwiches, salads, slicing, salsas, sauces, tomato juice, and canning. Cold Tolerant. Excellent choice for home gardens. A variety was developed by the Dominion Experiment Farm, Kentville, Nova Scotia, Canada. United States Department of Agriculture, PI 279817. Determinate.



TM522-10 - Shady Lady Tomato Seeds

80 days. Solanum lycopersicum. (F1) Shady Lady Tomato. The plant produces high yields of 6 to 10 oz deep red tomatoes. It is one of the sweetest and most delicious full-flavored tomatoes. Perfect for salads, slicing, and sandwiches. This is the number one producer and a favorite at the farmer's marketplace and is one of the most widely grown fresh market tomatoes in California. It has sturdy vines and heavy foliage that provide good protection against sunburn. Suitable for containers, patios, or small gardens where space is very limited! Good quality tomato used for commercial production with excellent transportation ability and extended keeping characteristics. An excellent choice for home gardens, farmer's markets, market growers, and open field production. Disease Resistant: V, F, A, St, TMV. Determinate.



TM575-20 - Sheboygan Tomato

80 days. Solanum lycopersicum. Open Pollinated. The plant produces heavy yields of 4 to 6 oz pink plum-shaped tomatoes. They are very sweet, meaty, juicy, and flavorful. Perfect for making sauce, puree, and paste. It is one of the best varieties for canning! Excellent choice for home gardens. An heirloom variety dating back to the 1900s. Indeterminate.



TM700-10 - Shilling Giant Tomato

80 days. Solanum lycopersicum. Open Pollinated. The plant produces good yields of 12 to 16 oz red heart-shaped tomatoes. They are solid, juicy, and delicious. Perfect for salads, slicing, sandwiches, and making rich tomato sauce. Excellent choice for home gardens. An heirloom variety. Indeterminate.



TM481-20 - Sicilian Saucer Tomato Seeds

75 days. Solanum lycopersicum. Open Pollinated. Sicilian Saucer Tomato. The plant produces good yields of 2 to 3 lb red giant beefsteak tomatoes. They are very sweet, meaty, juicy, and flavorful. Perfect for salads, slicing, sandwiches, and making sauces. Try growing the biggest tomato you will ever see! The plant requires support, either staking or cages. An excellent choice for home gardens. An heirloom variety from Sicily, Italy. Indeterminate.



TM630-10 - Siletz Tomato Seeds

52 days. Solanum lycopersicum. Open Pollinated. Siletz Tomato. This early maturing plant produces high yields of 10 to 12 oz deep red tomatoes. They are sweet and flavorful. Perfect for salads, sandwiches, and canning. Plants will yield well even in cool weather. Cold Tolerant. It is parthenocarpic, meaning it can set tomatoes without pollination. An excellent choice for home gardens and greenhouses. A variety was developed in 1994 by Dr. James Baggett of Oregon State University, Oregon, USA. Disease Resistant: V, F. Determinate.



TM634-20 - Sioux Tomato

70 days. Solanum lycopersicum. Open Pollinated. This early maturing plant produces high yields of 4 to 6 oz red tomatoes. They are incredibly sweet, tangy, and full of those rich complex flavors that make a delicious tomato. Excellent for salads, slicing, sandwiches, and canning. Continues to produce large harvests even in hot weather and dry regions. Heat Tolerant. The plant requires support, either staking or cages. Excellent choice for home gardens. An heirloom variety was developed in 1944 by the University of Nebraska, USA. United States Department of Agriculture, PI 270210. Indeterminate.



TM835-20 - Skyreacher Tomato

75 days. Solanum lycopersicum. Open Pollinated. The plant produces heavy yields of 4 to 6 oz bi-colored red tomatoes with orange stripes. They are sweet and flavorful. Perfect for salads, slicing, garnishes, or culinary creations. Crack-Resistant. Excellent choice for home gardens. Determinate.



TM64-10 - Slava Tomato Seeds

65 days. Solanum lycopersicum. Open Pollinated. Slava Tomato. This early maturing plant produces heavy yields of 1 to 2 oz red tomatoes. They are very flavorful. Perfect for salads and slicing. A potato leaf variety. Excellent choice for home gardens. An heirloom variety from the Republic of Czech. United States Department of Agriculture, PI 466917. Indeterminate.



TM380-20 - Small Red Cherry Tomato Seeds

75 days. Solanum lycopersicum. Open Pollinated. Small Red Cherry Tomato. The plant produces high yields of ½ to ¾ oz red cherry tomatoes. They are sweet and flavorful. Perfect for salads and snacks. These are smaller and sweeter than the Large Red Cherry Tomato. Grows in clusters. The plant requires support, either staking or cages. An excellent choice for home gardens. An heirloom variety from the United States of America dating back more than 100 years. Indeterminate.



TM188-10 - Snow White Tomato Seeds

75 days. Solanum lycopersicum. Open Pollinated. Snow White Tomato. The plant produces high yields of 1 oz white cherry tomatoes. They are very sweet and flavorful. Perfect for salads, garnishes, or culinary creations. Try growing red, yellow, and white cherry tomatoes for a colorful salad. An excellent choice for home gardens. A variety from the USA. Indeterminate.



TM156-20 - Soldacki Tomato Seeds

75 days. Solanum lycopersicum. Open Pollinated. Soldacki Tomato. The plant produces high yields of 1 lb pink beefsteak tomatoes. They are very sweet and flavorful. Perfect for salads, slicing, and sandwiches. A potato leaf variety. An excellent choice for home gardens. An heirloom variety from Krakow, Poland dating back to the early 1900s. Indeterminate.



TM221-10 - Sophie's Choice Tomato

54 days. Solanum lycopersicum. Open Pollinated. This early maturing plant produces good yields of 8 to 10 oz orange-red tomatoes. They are sweet and flavorful. Perfect for salads, slicing, and sandwiches. Suitable for container gardening, patios, hanging baskets, or small gardens where space is very limited! Does well in cold temperatures. Cold Tolerant. An excellent choice for home gardens. An heirloom variety from Edmonton, Canada. Determinate.



TM937-10 - Spark's Yellow Tomato

90 days. Solanum lycopersicum. Open Pollinated. The plant produces high yields of 1 lb yellow beefsteak tomatoes. They are sweet and mild, meaty, juicy, and flavorful. Excellent for salads, slicing, salsas, paste, sauces, canning, and gourmet dishes. The plant requires support, either staking or cages. A potato leaf variety. An excellent choice for home gardens. Indeterminate.



TM393-20 - Speckled Roman Tomato

85 days. Solanum lycopersicum. Open Pollinated. The plant produces heavy yields of 6 to 8 oz bi-colored red tomatoes with golden stripes. They have the real tomato taste with very few seeds. Perfect for salads, and for making sauce, puree, paste, ketchup, and canning. A cross of an Antique Roman and a Banana Legs tomato. Also known as Striped Roman Tomato. Crack-Resistant. Excellent choice for home gardens. Indeterminate.



TM168-10 - Spitze Tomato

78 days. Solanum lycopersicum. Open Pollinated. The plant produces good yields of 4 to 6 oz red pear-shaped tomatoes. They are sweet and flavorful. Perfect for salads and making sauce, puree, or paste. Excellent choice for home gardens. An heirloom variety from Romania. Indeterminate.



TM461-20 - Sprite Tomato

60 days. Solanum lycopersicum. Open Pollinated. This early maturing plant produces high yields of 1/2 to 3/4 oz red grape tomatoes. They are sweet, juicy, and very flavorful with thin skin. Perfect for salads and snacks. Suitable for containers, patios, or small gardens where space is very limited! An excellent choice for home gardens. Determinate.



TM768-10 - Steak Sandwich Tomato Seeds

70 days. Solanum lycopersicum. (F1) Steak Sandwich Tomato. This early maturing plant produces high yields of 10 oz red beefsteak tomatoes. It has a rich old-fashioned tomato flavor. Perfect for sandwiches, burgers, salads, and slicing. This bush-type plant is produced continuously throughout mid-summer to early fall. Excellent choice for home gardens. Indeterminate.



TM898-10 - SteakHouse Tomato Seeds

75 days. Solanum lycopersicum. (F1) SteakHouse Tomato. The plant produces high yields of 3 to 4 lb red beefsteak tomatoes. It has a rich old-fashioned tomato flavor. Perfect for salads, slicing, and sandwiches. This is the World's Largest Beefsteak Tomato! Impress your neighbors by growing a humongous-sized tomato in your backyard garden. The plant requires support, either staking or cages. An excellent choice for home gardens. Disease Resistant: V, F. Indeterminate.



TM884-20 - Striped German Tomato

78 days. Solanum lycopersicum. Open Pollinated. The plant produces high yields of 1 to 2 ½ lb bi-colored yellow beefsteak tomatoes with red marbling. They are sweet, fruity, and very flavorful. One of the best-tasting tomatoes. Perfect for salads, slicing, garnishes, or culinary creations. A potato leaf variety. An excellent choice for home gardens. An heirloom variety from Hampshire County, West Virginia, USA. Indeterminate.



TM679-10 - Stump of the World Tomato Seeds

80 days. Solanum lycopersicum. Open Pollinated. Stump of the World Tomato. The plant produces good yields of 1 lb dark pink beefsteak tomatoes. They are very sweet, meaty, juicy, and flavorful. It has a rich old fashioned tomato flavor. They are as flavorful as a Brandywine but more productive. One of the very best tasting tomatoes. Perfect for salads, slicing, and sandwiches. A potato leaf variety. An excellent choice for home gardens. An heirloom variety from the USA. Indeterminate.



TM471-20 - Stupice Tomato

55 days. Solanum lycopersicum. Open Pollinated. This early maturing plant produces high yields of 2 to 4 oz red tomatoes. One of the best-tasting early tomatoes. Perfect for salads and slicing. Suitable for Northern regions. Cold Tolerant. A potato leaf variety. An excellent choice for home gardens. An heirloom variety from the Czech Republic. United States Department of Agriculture, PI 250436. Indeterminate.



TM556-10 - Sugar Lump Tomato Seeds

75 days. Solanum lycopersicum. Open Pollinated. Sugar Lump Tomato. The plant produces heavy yields of 1 oz red cherry tomatoes. They are sweet and flavorful. Perfect for salads and snacks. Grows in clusters of 6 to 12. Excellent choice for home gardens. An heirloom variety from Germany. United States Department of Agriculture, PI 355123. Indeterminate.



TM662-10 - Sugar Plum Tomato Seeds

102 days. Solanum lycopersicum. (F1) Sugar Plum Tomato. The plant produces heavy yields of ½ to ¾ oz bright red grape tomatoes. They are very sweet and flavorful. It has been rated the best tasting grape tomato in taste tests! Perfect for salads and snacks. An excellent choice for home gardens. Indeterminate.



TM388-10 - Sugary Tomato Seeds

2005 All-America Selections Winner!

60 days. Solanum lycopersicum. (F1) Sugary Tomato. This early maturing plant produces heavy yields of 1 to 2 oz glossy reddish pink Grape tomatoes. They are very sweet and flavorful. Perfect for salads and snacks. Grows in clusters of 15 to 20, like grapes. Crack Resistant. Suitable for containers, patios, or small gardens where space is very limited! An excellent choice for home gardens. A variety from the USA. Semi-Determinate.



TM560-10 - Suncherry Extra Sweet Tomato Seeds

55 days. Solanum lycopersicum. (F1) Suncherry Extra Sweet Tomato. This early maturing plant produces heavy yields of ¼ to ¾ oz bright red tomatoes. They are very sweet and flavorful with a 9-10 Brix degree in sugar content. Perfect for salads and snacks. Crack Resistant. An excellent choice for home gardens. Disease Resistant: F, TMV. Indeterminate.



TM290-10 - Suncherry Tomato

58 days. Solanum lycopersicum. (F1) This early maturing plant produces heavy yields of ½ to ¾ oz bright red cherry tomatoes. They are very sweet and flavorful with thin skin. Perfect for salads and snacks. Grows in clusters of 20. An excellent choice for home gardens and market growers. Disease Resistant: V, F, St, TMV. Indeterminate.



[TM558-20 - Sungella Tomato Seeds](#)

70 days. Solanum lycopersicum. Open Pollinated. Sungella Tomato. This early maturing plant produces high yields of 2 oz orange tomatoes. They are very sweet, juicy, and flavorful. Perfect for salads, salsas, sauces, drying, garnishes, or culinary creations. Cold Tolerant. Low acidity variety. This is the dehybridized version. Suitable for greenhouse production. Always a great seller at Farmer's Markets! An excellent choice for home gardens, greenhouses, and market growers. Indeterminate.



[TM844-10 - Sungold Select Tomato Seeds](#)

70 days. Solanum lycopersicum. Open Pollinated. Sungold Select Tomato. This early maturing plant produces heavy yields of ¾ to 1 oz orange cherry tomatoes. They are very sweet, juicy, and flavorful. Perfect for salads, garnishes, or culinary creations. This is the dehybridized version of the Sungold Tomato. An excellent choice for home gardens, greenhouses, and market growers. Indeterminate.



[TM127-10 - Sungold Tomato Seeds](#)

57 days. Solanum lycopersicum. (F1) Sungold Tomato. This early maturing plant produces heavy yields of ¾ to 1 oz tangerine orange cherry tomatoes. They are very sweet, juicy, fruity, and extremely flavorful with thin skin. One of the sweetest cherry tomatoes on the market with a high Brix count of 9-10. Winner of the prestigious British Horticultural Society Award of Garden Merit. Perfect for salads, garnishes, or culinary creations. It has a good shelf life too. Kids love them! Grows in clusters of 10 to 15 on grape trusses. The plant can grow as tall as 10 feet and requires support, either staking or cages. Suitable for greenhouse production. An excellent choice for home gardens, market growers, and greenhouse production. Disease Resistant: V, FF, N, TMV. Indeterminate.



[TM754-20 - Sunkeeper Tomato](#)

72 days. Solanum lycopersicum. (F1) This early maturing plant produces high yields of 12 oz red tomatoes. They are sweet and flavorful. Perfect for salads, slicing, and sandwiches. The plant produces up to 20% more tomatoes than comparable varieties. Not only does it do well in Florida and other Southeastern states, but it also does well in Mountainous regions. A good quality tomato is used for commercial production. Excellent choice for home gardens, market growers, and open field production. Disease Resistant: V, FFF, St, CR. Determinate.



[TM663-10 - Sunny Boy Tomato Seeds](#)

70 days. Solanum lycopersicum. (F1) Sunny Boy Tomato. This early maturing plant produces high yields of 7 to 16 oz bright yellow beefsteak tomatoes. They are very flavorful. Perfect for salads, slicing, sandwiches, garnishes, or culinary creations. These attractive tomatoes will add a lovely addition to your home garden! It is a good shipper variety and holds up well. Excellent for East Coast stake production. Always a great seller at Farmer's Markets! Excellent choice for home gardens, market growers, and open field production. Indeterminate.



[TM291-20 - Sunny Goliath Tomato](#)

70 days. Solanum lycopersicum. (F1) This early maturing plant produces good yields of 7 to 8 oz yellow tomatoes. They are very sweet, juicy, and flavorful. It turns from bright yellow to gold when mature, but can be harvested when yellow. This is a great tomato variety for those who don't like the highly acidic taste of most red tomatoes. Perfect for salads, garnishes, or culinary creations. Always a great seller at Farmer's Markets! An excellent choice for home gardens and market growers. Disease Resistant: V, F, N. Indeterminate.



TM447-20 - Sunray Tomato Seeds

75 days. *Solanum lycopersicum*. Open Pollinated. Sunray Tomato. The plant produces heavy yields of 8 to 10 oz golden orange tomatoes. They are very sweet, meaty, and very flavorful. It has a rich full tomato flavor. Perfect for salads, slicing, sandwiches, and for making sauces. Also known as Golden Sunray Tomato. It is a cross between a Pan American and a Jubilee tomato. The plant has good foliage protecting tomatoes from sunscald. Produces well even in hot, dryer growing regions. Heat Tolerant. Drought Tolerant. An excellent choice for home gardens and market growers. An heirloom variety was developed in 1950 by Dr. W. S. Porte at the USDA Station at Beltsville, Maryland, USA. United States Department of Agriculture, PI 270249. Disease Resistant: V, FF. Indeterminate.



TM280-20 - SunSugar Tomato Seeds

62 days. *Solanum lycopersicum*. (F1) SunSugar Tomato. This early maturing plant produces heavy yields of ½ to ¾ oz orange cherry tomatoes. They are very sweet, juicy, and flavorful with thin skin. It has a rich full tomato flavor. High in Vitamin A. Rated the best-tasting tomato in trials. Perfect for salads and snacks. Grows in clusters. Crack Resistant. The plant requires support, either staking or cages. An excellent choice for home gardens. Disease Resistant: F, TMV. Indeterminate.



TM129-20 - Super Beefsteak Tomato Seeds

80 days. *Solanum lycopersicum*. Open Pollinated. Super Beefsteak Tomato. The plant produces high yields of 17 oz red beefsteak tomatoes. It has a rich full tomato flavor. Perfect for sandwiches, burgers, salads, and slicing. Crack Resistant. An excellent choice for home gardens and market growers. Disease Resistant: V, F, N. Indeterminate.



TM938-20 - Super Choice Tomato

85 days. *Solanum lycopersicum*. Open Pollinated. The plant produces heavy yields of 1 to 2 lb red beefsteak tomatoes. It has a rich old-fashioned tomato flavor. Perfect for sandwiches, salads, and slicing. An excellent choice for home gardens. An old Amish heirloom variety from Hobart Pearson of Berea, Kentucky. Indeterminate.



TM262-20 - Super Marmande Tomato Seeds

68 days. *Solanum lycopersicum*. Open Pollinated. Super Marmande Tomato. This early maturing plant produces high yields of 10 to 16 oz red beefsteak tomatoes. They are very sweet, meaty, juicy, and flavorful. Perfect for sandwiches, burgers, salads, slicing, and canning. An excellent choice for home gardens. An heirloom from France. Disease Resistant: V, F, A. Semi-Determinate.



TM543-20 - Super Sioux Tomato

70 days. *Solanum lycopersicum*. Open Pollinated. This early maturing plant produces high yields of 4 to 6 oz red tomatoes. They are sweet and very flavorful. Perfect for salads, slicing, sandwiches, sauce, and canning. It sets well in high temperatures and dry conditions. Heat and Drought Tolerant. Crack Resistant. Also known as Super Lakota Tomato. Excellent choice for home gardens. An heirloom variety was developed in 1944 by the Nebraska Experimental Station, Nebraska, USA. Semi-Determinate.



TM767-10 - SuperSauce Tomato Seeds

70 days. Solanum Lycopersicum. (F1) SuperSauce Tomato. This early maturing plant produces high yields of 1 to 2 ½ lb red tomatoes. They are very sweet, meaty, juicy, and flavorful. Perfect for making sauce, puree, paste, and canning. It is also great for sandwiches, burgers, salads, and slicing. It is so large, 5 ½" long by 5" wide, one tomato fills an entire sauce jar. The World's Largest Paste Tomato! It is super-easy to peel, making homemade sauce quick and easy. Excellent choice for home gardens. Diseases Resistant. Indeterminate.



TM637-20 - Supersonic Tomato

75 days. Solanum lycopersicum. (F1) The plant produces heavy yields of 8 to 12 oz red tomatoes. They are sweet and flavorful. Perfect for salads, slicing, sandwiches, and canning. Suitable for the Northeast region of the United States. Crack Resistant. An excellent choice for home gardens, farmer's markets, and market growers. Disease Resistant: V, F. Indeterminate.



TM132-20 - SuperSweet 100 Tomato Seeds

65 days. Solanum lycopersicum. (F1) SuperSweet 100 Tomato. This early maturing plant produces high yields of 1 oz red cherry tomatoes. They are super sweet, very flavorful, and extra high in Vitamin C. Perfect for fresh eating right off the vine or in salads. One of the best-tasting bite-sized cherry tomatoes! The plant produces hundreds of cherry tomatoes in clusters. The plant requires support, either staking or cages. An excellent choice for home gardens, farmer's markets, and market growers. Disease Resistant: V, F, N. Indeterminate.



TM819-10 - Supremo Tomato Seeds

68 days. Solanum lycopersicum. (F1) Supremo Tomato. This early maturing plant produces high yields of 5 to 6 oz bright red Roma tomatoes. They have thick walls, are meaty, and are very flavorful. Perfect for salads, salsas, making sauce, puree, paste, and canning. It has a long shelf life. Heat Tolerant. Suitable for containers, patios, or small gardens where space is very limited. An excellent choice for home gardens and market growers. Disease Resistant: V, FFF, N, BS, TSWV. Determinate.



TM133-20 - Sweet Chelsea Tomato Seeds

65 days. Solanum lycopersicum. (F1) Sweet Chelsea Tomato. This early maturing plant produces high yields of ¾ to 1 oz red cherry tomatoes. They are very sweet and flavorful. Perfect for salads, and snacks. Grows in clusters of 15 to 20. The plant requires support, either staking or cages. Drought Tolerant. Crack Resistant. An excellent choice for home gardens and market growers. Disease Resistant: V, FF, N, TMV. Indeterminate.



TM872-20 - Sweet Gold Tomato

60 days. Solanum lycopersicum. (F1) Early maturing plant produces heavy yields of ½ to ¾ oz bright golden yellow cherry tomatoes. They are sweet, fruity, and delicious. Perfect for salads, garnishes, or culinary creations. This is a golden yellow version of the Sweet Million tomato. Grows in clusters. Crack-Resistant. Excellent choice for home gardens and market growers. Disease Resistant: F, TMV. Indeterminate.



TM561-10 - Sweet Hearts Tomato

60 days. Solanum lycopersicum. (F1) This early maturing plant produces high yields of ¼ to ½ oz bright red grape tomatoes. They are super sugary sweet and delicious. One of the best grape tomatoes on the market! Perfect for salads, snacks, and vegetable platters. Grows in clusters. It has a long shelf life. Crack Resistant. Always a great seller at Farmer's Markets! An excellent choice for home gardens and market growers. Disease Resistant: F, TMV. Indeterminate.



TM135-20 - Sweet Million Tomato Seeds

65 days. Solanum lycopersicum. (F1) Sweet Million Tomato. This early maturing plant produces heavy yields of ½ to ¾ oz red cherry tomatoes. They are very sweet and flavorful. Perfect fresh eating right off the vine or in salads. Winner of the Royal Horticultural Society Award of Garden Merit. It has impressive disease resistance. The plant produces over 500 cherry tomatoes! Crack Resistant. The plant requires support, either staking or cages. An excellent choice for home gardens and market growers. Disease Resistant: V, FF, N, St, TMV, ToMV. Indeterminate.



TM664-20 - Sweet Pea Currant Tomato Seeds

75 days. Solanum pimpinellifolium. Open Pollinated. Sweet Pea Currant Tomato. The plant produces high yields of tiny ¼ oz red cherry tomatoes. They are very sweet and very flavorful. It has a rich full tomato flavor. Perfect for salads, garnishes, or culinary creations. Grows in clusters of 10 to 12. The plant produces thousands of tiny cherry tomatoes. The best red currant tomato. Suitable for container gardening, patios, hanging baskets, or small gardens where space is very limited! An excellent choice for home gardens. Indeterminate.

TM579-10 - Sweet Treats Tomato

70 days. Solanum lycopersicum. (F1) This early maturing plant produces heavy yields of ¾ to 1 oz pink cherry tomatoes. They are very sweet and flavorful. Perfect for salads, garnishes, or culinary creations. Grows in clusters of 12 to 25. Crack Resistant. An excellent choice for home gardens. Disease Resistant: FF, St, TMV. Indeterminate.



TM947-10 - Sweetheart of the Patio Tomato Seeds

68 days. Solanum lycopersicum. (F1) Sweetheart of the Patio Tomato. This early maturing strong compact plant produces high yields of 1" wide by 1" long bright red Grape tomatoes. They are very sweet and flavorful. Perfect fresh eating right off the vine or in salads. They are very easy to pick. An excellent choice for home gardens and patio. Disease Resistant: LB. Determinate.



TM562-10 - Tami G Tomato

62 days. Solanum lycopersicum. (F1) This early maturing plant produces high yields of ½ to ¾ oz dark red grape tomatoes. They are very sweet and flavorful. One of the best-tasting grape tomatoes! Perfect for salads, snacks, and vegetable platters. Grows in clusters of 10 to 18. The plant requires support, either staking or cages. Excellent choice for home gardens and market growers. Disease Resistant: F, A, St, BS. Indeterminate.



TM678-20 - Tappy's Finest Tomato Seeds

78 days. Solanum lycopersicum. Open Pollinated. Tappy's Finest Tomato. The plant produces excellent yields of 1 lb dark pink beefsteak tomatoes. They are very sweet, meaty, and flavorful. Perfect for salads, slicing, and sandwiches. Excellent choice for home gardens. An heirloom variety from West Virginia, USA. Indeterminate.



TM760-20 - Tasti Lee Tomato

75 days. Solanum lycopersicum. (F1) The plants produce high yields of 6 to 9 oz red tomatoes. They are very sweet and flavorful. It has a rich full tomato flavor. Perfect for salads, slicing, sandwiches, salsa, and sauce. It also has higher lycopene - up to 40% more than other varieties! It has an extended shelf life. It was developed in Florida to withstand high temperatures. Heat Tolerant. Always a great seller at Farmer's Markets! Good-quality tomatoes are used for commercial production. Excellent choice for home gardens, market growers, and open field production. Dr. Jay Scott developed a variety at the University of Florida. Disease Resistant: V, FFF, St. Determinate.



TM452-20 - Taxi Tomato Seeds

65 days. Solanum lycopersicum. Open Pollinated. Taxi Tomato. This early maturing plant produces heavy yields of 4 to 6 oz bright yellow tomatoes. They are mild, meaty, juicy, and flavorful. Perfect for salads, slicing, sandwiches, salsas, garnishes, or culinary creations. One of the best yellow tomatoes for short-season regions. Low acidity variety. Does well in hot and humid regions. Heat Tolerant. High Humidity Tolerant. Suitable for containers, patios, or small gardens where space is very limited! Excellent choice for home gardens. Determinate.



TM848-20 - Ten Fingers of Naples Tomato Seeds

75 days. Solanum lycopersicum. Open Pollinated. Ten Fingers of Naples Tomato. The plant produces heavy yields of giant 3 oz red Roma tomatoes. Tomatoes are giant and grow 5 to 6" in length! They have thick walls, are meaty, and are very flavorful. Perfect for making sauce, puree, paste, salsa, cooking, and canning. One of the best tasting paste tomatoes. Also known as Dix Doughts de Naples Tomato. Grows in clusters. Excellent choice for home gardens. An heirloom variety from Naples, Italy. Determinate.



TM599-20 - Thai Pink Pear Tomato

75 days. Solanum lycopersicum. Open Pollinated. The plant produces high yields of pink pear-shaped tomatoes. They are mildly sweet and flavorful. Perfect for salads, garnishes, or culinary creations. It is similar to the Thai Pink Egg tomato, but a shorter plant. It has an extended shelf life and stores well. Suitable for containers, patios, or small gardens where space is very limited! Excellent choice for home gardens. An heirloom variety from Thailand. Determinate.



TM376-20 - Thessaloniki Tomato

75 days. Solanum lycopersicum. Open Pollinated. The plant produces good yields of 6 to 8 oz red tomatoes. They are beautifully smooth, sweet, and very flavorful. It has a rich old-fashioned tomato flavor. Perfect for salads, slicing, sandwiches, and canning. The plant has good foliage protecting tomatoes from sun-scald. Crack Resistant. It has an extended shelf life and stores well. An excellent choice for home gardens and market growers. An heirloom variety from Greece dating back to the 1950s. United States Department of Agriculture, PI 303795. Indeterminate.



TM459-20 - Three Sisters Tomato

82 days. *Solanum lycopersicum*. Open Pollinated. The plant produces good yields of 4 to 6 oz pink beefsteak tomatoes. They are very sweet, meaty, juicy, and flavorful. Perfect for salads, slicing, and sandwiches. It was developed in search of a perfect tomato! It is a cross of three distinctive tomatoes, a Roma type, a large salad type, and a flattened globe type. A potato leaf variety. Always a great seller at Farmer's Markets! Excellent choice for home gardens and market growers. An heirloom variety. Indeterminate.



TM677-20 - Tidwell German Tomato Seeds

80 days. *Solanum lycopersicum*. Tidwell German Tomato. Open Pollinated. The plant produces excellent yields of 1 to 3 lb pink beefsteak tomatoes. They are sweet, meaty, and very flavorful. Perfect for salads, slicing, and sandwiches. Excellent choice for home gardens. A 1920s heirloom variety from the Tidwell family of Tennessee, USA. Indeterminate.



TM136-20 - Tiffen Mennonite Tomato Seeds

85 days. *Solanum lycopersicum*. Open Pollinated. Tiffen Mennonite Tomato. The plant produces excellent good yields of 13 to 16 oz pink beefsteak tomatoes. It has a rich old fashioned tomato flavor. They have an outstanding flavor similar to the Brandywine tomato. It has won a few tomato taste awards. Perfect for salads, slicing, and sandwiches. A potato leaf variety. Excellent choice for home gardens. An heirloom variety from the Mennonites in Wisconsin, USA. Indeterminate.



TM813-20 - Tiger Pink Tomato

70 days. *Solanum lycopersicum*. Open Pollinated. This early maturing plant produces high yields of 1 to 2 oz bi-colored deep pink cherry Roma tomatoes with orange stripes. They are very sweet, juicy, and flavorful. Perfect for salads, garnishes, or culinary creations. They can also be picked prematurely and allowed to ripen off the vine without compromising the flavor. An Artisan Series variety. Crack Resistant. Does well outdoors or in the greenhouse. Excellent choice for home gardens and greenhouses. Indeterminate.



TM490-20 - Tigerella Tomato Seeds

55 days. *Solanum lycopersicum*. Open Pollinated. Tigerella Tomato. This early maturing plant produces high yields of 2 to 4 oz bicolored bright red tomatoes with orange stripes. They are meaty, juicy, and have a rich tangy flavor. One of the finest preferred supermarket tomatoes around. The plant requires support, either staking or cages. Suitable for both greenhouse and open field production. An excellent choice for home gardens, farmer's markets, market growers, greenhouses, open production, and commercial production. An heirloom variety developed by Dr. Lewis Darby of the United Kingdom Glasshouse Crops Research Institute. Indeterminate.



TM266-10 - Tiny Tim Tomato Seeds

45 days. *Solanum lycopersicum*. Open Pollinated. Tiny Tim Tomato. This early maturing plant produces heavy yields of bright red cherry tomatoes. They are very sweet and flavorful. Perfect fresh eating right off the vine or in salads. The dwarf plant is suitable for container gardening, patios, hanging baskets, window sill gardens, or small gardens where space is very limited. An excellent choice for home gardens. An heirloom variety was developed in 1945 by the University of New Hampshire, USA. United States Department of Agriculture, PI 303797. Determinate.



[TM676-10 - Todd County Amish Tomato Seeds](#)

75 days. Solanum lycopersicum. Open Pollinated. Todd County Amish Tomato. The plant produces excellent yields of 1 to 2 lb dark pink beefsteak tomatoes. They are very sweet, meaty, juicy, and flavorful. It has a rich old fashioned tomato flavor. Perfect for salads, slicing, and sandwiches. A potato leaf variety. An excellent choice for home gardens. An Amish heirloom variety from Minnesota, USA. Indeterminate.



[TM416-10 - Tomatoberry Tomato](#)

60 days. Solanum lycopersicum. (F1) This early maturing plant produces high yields of 1 to 2 oz bright red strawberry-shaped tomatoes. They are firm, meaty, and very flavorful. These are perfect for salads, garnishes, or culinary creations. It won the third place innovation award at the Fruit Logistica Show in Berlin in 2008. Also won a major taste trial. Grows in clusters of 25 to 30. Crack Resistant. It has an extended shelf life and stores well. Suitable for container gardening, greenhouse, and open field production. Always a great seller at Farmer's Markets! An excellent choice for home gardens, greenhouses, market growers, and open field production. A variety developed in Japan. Disease Resistant: F, N, TMV. Indeterminate.



[TM344-20 - Tommy Toe Tomato Seeds](#)

70 days. Solanum lycopersicum. Open Pollinated. Tommy Toe Tomato. This early maturing plant produces heavy yields of ½ to ¾ oz bright glossy red cherry tomatoes. They are mild, juicy, and flavorful. It has a rich old fashioned tomato flavor. Perfect for salads, snacks, vegetable platters, and making tomato juice. It has won many blue ribbons and taste tests around the world. Also known as Steakhouse Tomato. The plant produces hundreds of small cherry tomatoes. It does extremely well in hot and humid regions. An excellent choice for home gardens. An heirloom variety from the Ozarks, Arkansas, USA. Disease Resistant: BR, EB. Indeterminate.



[TM955-10 - Topsy Tom Tomato Seeds](#)

55 days. Solanum lycopersicum. Open Pollinated. Topsy Tom Tomato. This early maturing compact plant produces high yields of large 1" round Cherry tomatoes. It was bred especially for upside down container growing. The tomatoes are very sweet and flavorful. Excellent for salads and fresh eating right off the plant. Also, great sautéed and served over pasta. The plant holds an abundant amount of tomatoes, and the branches are wind tolerant and won't break in wind. Cold Tolerant. An excellent choice for home gardens. A variety from the USA. Semi-Determinate.



[TM524-20 - Torbay Tomato Seeds](#)

75 days. Solanum lycopersicum. (F1) Torbay Tomato. The plant produces good yields of 6 to 8 oz pink tomatoes. They are mild, meaty, juicy, and flavorful. A very beautiful tomato that is perfect for salads, garnishes, or culinary creations. Low acidity variety. Always a great seller at Farmer's Markets! Excellent choice for home gardens and market growers. Disease Resistant: V, FF. Determinate.



[TM306-20 - Traveler 76 Tomato](#)

78 days. Solanum lycopersicum. Open Pollinated. The plant produces high yields of 6 to 8 oz dark pink tomatoes. They are very sweet, meaty, juicy, and flavorful. Perfect for sandwiches, salads, slicing, and canning. One of the best-tasting pink tomatoes. It is much earlier and more dependable than the Brandywine tomato. Crack-Resistant. Heat and humidity tolerant. An excellent choice for home gardens. The Arkansas Traveler version was developed in 1971. Later in 1976, the Traveler 76 heirloom version was developed by Joe McFerran at the University of Arkansas Horticulture Department, Arkansas, USA. Indeterminate.



TM386-20 - Trophy Tomato Seeds

80 days. *Solanum lycopersicum*. Open Pollinated. Trophy Tomato. The plant produces high yields of 5 to 8 oz red tomatoes. They are mildly sweet, firm, juicy, and flavorful. Perfect for salads, slicing, sandwiches, and canning. In 1870, Colonel George E Waring, Jr, of Newport, Rhode Island, sold these seeds at the enormous price of \$5.00 per packet (equivalent to \$80 dollars today). Many gardeners purchased these seeds in hopes of winning the \$100 grand prize at the local fair. With national exposure, people planted it all over the country, and it was carried by most seed companies at that time. It remained very popular from 1872 until about 1926. It is a cross of a Large Red Tomato and an Early Red Smooth Tomato. Grows in clusters of 4 to 5. Excellent choice for home gardens. An heirloom variety from Rhode Island, USA. United States Department of Agriculture, PI 636255. Indeterminate.



TM509-20 - Trucker's Favorite Tomato Seeds

75 days. *Solanum lycopersicum*. Open Pollinated. Trucker's Favorite Tomato. The plant produces excellent yields of 6 to 12 oz pink beefsteak tomatoes. They are very sweet and flavorful. It has a rich old fashioned tomato flavor. Perfect for salads, slicing, and sandwiches. Grows in clusters of 3 to 4. Crack Resistant. Excellent choice for home gardens. A pre-1900 heirloom variety from Burlington County, New Jersey, USA. Indeterminate.



TM639-5 - Trust Tomato Seeds

78 days. *Solanum lycopersicum*. (F1) Trust Tomato. The plant produces high yields of 8 to 10 oz bright red beefsteak tomatoes. They are very sweet, firm, and flavorful. Perfect for salads, slicing, and sandwiches. One of the best greenhouse tomatoes in the United States. Suitable for hydroponics gardening. It has an extended shelf life and stores well. An excellent choice for home gardens, greenhouses, and market growers. Disease Resistant: V, FF, FCRR, LM, TMV. Indeterminate.



TM565-10 - Tumbling Tom Yellow Tomato Seeds

63 days. *Solanum lycopersicum*. Open Pollinated. Tumbling Tom Yellow Tomato. This early maturing plant produces high yields of 1 to 2 oz yellow cherry tomatoes. They are very sweet and flavorful. Perfect fresh eating right off the vine or in salads. Produces up to 4 lbs of tomatoes per plant. It is ideal for hanging baskets. Suitable for container gardening, patios, hanging baskets, window boxes, and small gardens where space is very limited. Disease Resistant: V, F, N. Determinate.



TM865-20 - Tye-Dye Orange Tomato Seeds

65 days. *Solanum lycopersicum*. (F1) Tye-Dye Orange Tomato. This early maturing plant produces high yields of 7 oz bi-colored bright yellow-orange tomatoes with a blush of red both inside and outside. They are mildly sweet and flavorful. Perfect for salads, garnishes, or culinary creations. An excellent choice for home gardens. Disease Resistant: V, F, A. Indeterminate.



TM312-20 - Ukrainian Pear Tomato Seeds

84 days. *Solanum lycopersicum*. Open Pollinated. Ukrainian Pear Tomato. The plant produces excellent yields of 6 oz dark pink pear shaped tomatoes. They are very sweet and flavorful. Perfect for salads and for making sauce, puree, and paste. Excellent choice for home gardens. An heirloom variety from Yalta, Ukraine. Indeterminate.



[TM384-10 - Ultimate Opener Tomato Seeds](#)

57 days. Solanum lycopersicum. (F1) Ultimate Opener Tomato. This early maturing plant produces high yields of 8 oz bright red tomatoes. They are very sweet, juicy, and flavorful. They are so sweet and juicy that you can't stop eating them. Some gardeners say it is one of the best tasting tomatoes! Perfect for salads, slicing, and sandwiches. The best early season opening tomato in the world! These tomatoes are a third larger than the Early Girl tomato. Crack Resistant. A variety was developed by Dr. Paul Thomas, the same plant breeder who developed Better Boy and pioneered Early Girl Hybrid tomatoes. An excellent choice for home gardens and market growers. Disease Resistant: V, F. Indeterminate.



[TM640-10 - Ultra Boy II Tomato](#)

68 days. Solanum lycopersicum. (F1) This early maturing plant produces good yields of 8 to 14 oz red tomatoes. It has a rich old-fashioned tomato flavor. Perfect for salads, slicing, and sandwiches. Grows in clusters. The plant requires support, either staking or cages. An excellent choice for home gardens and market growers. Disease Resistant: V, F, N. Indeterminate.



[TM776-10 - Umberto Pear Tomato Seeds](#)

80 days. Solanum lycopersicum. Open Pollinated. Umberto Pear Tomato. The plant produces high yields of 2 oz dark pink Pear shaped tomatoes. They are very sweet, meaty, juicy, and flavorful. Perfect for salads and making sauce, puree, paste, and drying. The plant produces up to 250 tomatoes. Also known as King Umberto Tomato or King Humbert Tomato. Named after King Umberto (1844-1900) of Italy. An excellent choice for home gardens. An heirloom variety from Italy. Indeterminate.



[TM600-20 - Uva Roja Tomato](#)

85 days. Solanum lycopersicum. (F1) The plant produces heavy yields of ¾ oz red grape tomatoes. They are very sweet and flavorful. Perfect fresh eating right off the vine or in salads. Grows in clusters of 7 to 9. It makes a nice presentation selling them on trusses or packed fruit. Always a great seller at Farmer's Markets! Excellent choice for home gardens and market growers. Disease Resistant: V, TMV. Indeterminate.



[TM733-20 - Valencia Tomato](#)

76 days. Solanum lycopersicum. Open Pollinated. The plant produces excellent yields of 8 to 10 oz orange tomatoes. They are meaty and have a tangy flavor with very few seeds. Perfect for salads, slicing, garnishes, or culinary creations. It ripens earlier than many other orange varieties making it a good choice for gardeners with shorter seasons. Excellent choice for home gardens. An heirloom variety from Maine, USA. Indeterminate.



[TM958-10 - Veranda Red Tomato Seeds](#)

60 days. Solanum lycopersicum. (F1) Veranda Red Tomato. This early maturing dwarf plant produces high yields of 1 oz red Cherry tomatoes. They are very flavorful and sweet. This is the plant to get if you want a constant supply of cherry tomatoes. Excellent for snacks and salads. Suitable for decks, balconies, patios, and windowsill houseplants. An excellent choice for home gardens. A variety from the USA. Determinate.



TM757-20 - Vinson Watts Tomato

85 days. Solanum lycopersicum. Open Pollinated. The plant produces good yields of 10 to 18 oz deep pink beefsteak tomatoes. They are very sweet, meaty, juicy, and flavorful. Perfect for salads, slicing, and sandwiches. A tomato was grown by Vinson Watts of Morehead, Kentucky. He perfected the variety over 50 years and the result was a great tomato that had excellent flavor and texture. The tomato has won many taste tests and is considered by many to be the best tomato they ever tasted. An heirloom variety from Lee County, Virginia, USA, dating back to 1956. Indeterminate.



TM642-20 - Violaceum Krypni Rozo Tomato

75 days. Solanum lycopersicum. Open Pollinated. The plant produces good yields of 8 oz dark pink beefsteak tomatoes. They are very sweet, meaty, juicy, and flavorful. Perfect for salads, slicing, and sandwiches. These deeply scalloped tomatoes are so dark pink that they are almost purple. With its unique appearance, it is a real standout in the garden. An excellent choice for home gardens. An heirloom variety originally from Europe. Indeterminate.



TM721-20 - Virginia Sweets Tomato

80 days. Solanum lycopersicum. Open Pollinated. The plant produces high yields of 1 to 2 lb bi-colored golden yellow beefsteak tomatoes with red stripes that turn into a ruby blush on top. It has a rich full tomato flavor. One of the best tasting, most beautiful, and best producing bi-colored tomatoes. Perfect for salads, slicing, sandwiches, and culinary creations. An excellent choice for home gardens. An heirloom variety from Virginia, USA. Indeterminate.



TM282-10 - Viva Italia Tomato Seeds

75 days. Solanum lycopersicum. (F1) Viva Italia Tomato. The plant produces high yields of 3 to 4 oz deep red Roma tomatoes. They have thick walls, are meaty, and are very flavorful. Perfect in salads, for making paste, sauce, salsa, tomato soup, ketchup, canning, and freezing. It sets fruit much better in hot weather than other Roma varieties. Heat Tolerant. An excellent choice for home gardens and market growers. Disease Resistant: V, FF, N, A, BS. Determinate.



TM950-10 - Vivacious Tomato Seeds

85 days. Solanum lycopersicum. (F1) Vivacious Tomato. The plant produces high yields of 3" oval orange plum tomatoes. These beautiful orange tomatoes grow in clusters. They are very sweet, juicy, flavorful, and high in Vitamin A. Perfect fresh eating right off the vine. Excellent for salads, sandwiches, and cooking. An excellent choice for home gardens. Indeterminate.



TM356-10 - Walter Tomato Seeds

75 days. Solanum lycopersicum. Walter Tomato. The plant produces high yields of 8 oz red tomatoes. They are very flavorful. A low acid variety does well in the Southern regions. Excellent for salads, slicing, and sandwiches. Excellent choice for home gardens, farmer's markets, and market growers. An heirloom variety from Gisborne, New Zealand. Indeterminate.



TM405-20 - Wapsipinicon Peach Tomato Seeds

78 days. Solanum lycopersicum. Open Pollinated. Wapsipinicon Peach Tomato. The plant produces heavy yields of 2 to 3 oz creamy-yellow, almost white, tomatoes that are fuzzy like a peach. They are sweet and very flavorful. Perfect for salads, garnishes, or culinary creations. One of the best-tasting tomatoes. It has won many tomato taste tests with its fruity sweet flavor. Also known as Yellow Peach Tomato and White Peach Tomato. An excellent choice for home gardens. An 1890 heirloom variety from the Wapsipinicon River area, Iowa, USA. Indeterminate.



TM139-20 - Washington Cherry Tomato Seeds

60 days. Solanum lycopersicum. Open Pollinated. Washington Cherry Tomato. This early maturing bush plant produces high yields of ¾ to 1 oz red Cherry tomatoes. They are very sweet, meaty, juicy, and flavorful. Perfect for salads, snacks, and vegetable platters. Great shipping and storage tomato. This bush plant doesn't require staking. Always a great seller at Farmer's Markets! An excellent choice for home gardens, market growers, and open field production. A variety developed by the Washington State University, Washington, USA. Determinate.



[TM192-20 - Watermelon Beefsteak Tomato Seeds](#)

75 days. Solanum lycopersicum. Open Pollinated. Watermelon Beefsteak Tomato. The plant produces high yields of 1 to 2 lb pink beefsteak tomatoes. They are very sweet, meaty, juicy, and flavorful. It has a rich old-fashioned tomato flavor. Perfect for salads, slicing, and sandwiches. A plant can produce up to 50 lbs of tomatoes. An excellent choice for home gardens. An heirloom variety from West Virginia dating back to the 1800s. Indeterminate.



[TM206-20 - Wayahead Tomato Seeds](#)

63 days. Solanum lycopersicum. Open Pollinated. Wayahead Tomato. This early maturing plant produces good yields of 6 to 8 oz bright red tomatoes. They are very sweet, meaty, juicy, and flavorful. Perfect for salads, slicing, sandwiches, and making tomato juice. One of the best varieties for making tomato juice. They ripen early as its name indicates, way ahead of other varieties. The seeds were saved from the most select plants that had premium quality traits. Also known as Jung's Wayahead Tomato, Hudson Valley Tomato, and Earliana Tomato. A potato leaf variety. Excellent choice for home gardens. An heirloom variety dating back to 1921. United States Department of Agriculture, PI 633493. Determinate.



[TM803-10 - Wes Tomato](#)

78 days. Solanum lycopersicum. Open Pollinated. The plant produces high yields of 10 to 12 oz red heart-shaped tomatoes. They have thick walls, are meaty, and are very flavorful with few seeds. It has a rich full tomato flavor. Perfect for salads, slicing, and sandwiches. The plant requires support, either staking or cages. Excellent choice for home gardens. An heirloom variety. Indeterminate.



[TM200-20 - White Beauty Tomato](#)

85 days. Solanum lycopersicum. Open Pollinated. The plant produces good yields of 6 to 8 oz creamy white beefsteak tomatoes. They are very sweet, meaty, and flavorful. It is known for its sweet citrus taste that is richer and more complex than many white varieties. It is creamy white inside and outside with few seeds! Add color to salads, and culinary creations, or make a white spaghetti sauce! One of the best white tomatoes that they had ever been grown. Always a great seller at Farmer's Markets! An excellent choice for home gardens and specialty market growers. An heirloom variety dating back to the 1850s. United States Department of Agriculture, PI 270256. Indeterminate.



[TM140-20 - White Bush Tomato](#)

75 days. Solanum lycopersicum. Open Pollinated. The plant produces high yields of 3 to 4 oz white tomatoes with a yellow tinge. They are very sweet, meaty, and flavorful. Perfect for salads, slicing, canning, and making a white tomato sauce. Excellent choice for home gardens. An heirloom variety. Semi-Determinate.



[TM363-20 - White Cherry Tomato Seeds](#)

70 days. Solanum lycopersicum. Open Pollinated. White Cherry Tomato. This early maturing plant produces good yields of ¾ to 1 oz pale yellow to ivory cherry tomatoes. They are very sweet, juicy, and flavorful. It is one of the best white cherry tomatoes. Perfect for salads, garnishes, or culinary creations. Grows in clusters. Crack Resistant. Excellent choice for home gardens. A variety from the USA. Indeterminate.



[TM271-20 - White Potato Leaf Tomato Seeds](#)

75 days. Solanum lycopersicum. Open Pollinated. White Potato Leaf Tomato. The plant produces good yields of 4 to 6 oz pale yellow-white beefsteak tomatoes. They are very flavorful with mild fruity sweetness and a slightly tart flavor. Perfect for salads and slicing, making a white tomato sauce, and culinary creations. A potato leaf variety. Excellent choice for home gardens. Indeterminate.

[TM141-20 - White Wonder Tomato Seeds](#)

90 days. Solanum lycopersicum. Open Pollinated. White Wonder Tomato. The plant produces high yields of 8 to 16 oz yellowish white beefsteak tomatoes. They are mildly sweet, meaty, juicy, and flavorful. Yellowish white inside and outside when ripe. Perfect for salads, slicing, canning, vegetable platters, or making tomato juice. Also great for making a white cream of tomato soup or white tomato sauce. Low acidity variety. Excellent choice for home gardens. A pre-1860 heirloom variety. Indeterminate.



[TM292-20 - Window Box Roma Tomato](#)

70 days. Solanum lycopersicum. (F1) This early maturing plant produces high yields of 2 to 3 oz red pear-shaped tomatoes. They are sweet and flavorful. Perfect for salads and for making sauce and paste. It has an extended shelf life and stores well. Suitable for containers, patios, or small gardens where space is very limited! Excellent choice for home gardens. Disease Resistant: V, F, N. Determinate.



[TM381-10 - White Snowball Tomato Seeds](#)

85 days. Solanum lycopersicum. Open Pollinated. White Snowball Tomato. The plant produces high yields of 5 oz creamy white tomatoes. The skin and flesh are white! Are you allergic to the pigment in red tomatoes? Try this variety as it is less acidic than other tomatoes. One of the sweetest white tomatoes on the market. Add color to gourmet dishes by using white, red, pink, purple, and yellow tomatoes. Perfect for salads, slicing, canning, culinary creations, or making tomato juice. Also great for making a white spaghetti sauce! Low acidity variety. Always a great seller at Farmer's Markets! An excellent choice for home gardens and specialty market growers. An heirloom variety. Indeterminate.



[TM908-10 - Wild Galapagos Yellow Tomato Seeds](#)

70 days. Solanum cheesmaniae. Open Pollinated. Wild Galapagos Yellow Tomato. This early maturing plant produces high yields of very tiny ¼ to ½ oz bright yellow cherry tomatoes. They are very sweet and flavorful. Perfect for salads, garnishes, or culinary creations. This tomato was discovered growing to within a few feet of the surf line, clinging to the black volcanic rocks of the Galapagos Islands. They are a favorite of the marine iguanas that bask there. Excellent choice for home gardens. Indeterminate.



[TM537-10 - Wins All Tomato Seeds](#)

80 days. Solanum lycopersicum. Open Pollinated. Wins All Tomato. The plant produces high yields of 1 to 2 lb deep pink beefsteak tomatoes. They are sweet, tangy, juicy, and very flavorful. It has a rich full tomato flavor. Perfect for salads, slicing, and sandwiches. The plant has a heavy cover that resists foliage diseases and blossom end rot. It is an offspring of the popular heirloom Pink Ponderosa. A potato leaf variety. Excellent choice for home gardens. An heirloom variety dating back to 1924. Indeterminate. Disease Resistant: BR.



[TM207-20 - Wisconsin 55 Tomato Seeds](#)

78 days. *Solanum lycopersicum*. Open Pollinated. Wisconsin 55 Tomato. The plant produces high yields of 6 to 8 oz red tomatoes. They are very sweet and flavorful. Perfect for salads, slicing, sandwiches, and canning. Excellent shipper variety. Crack Resistant. An excellent choice for home gardens, market growers, and open field production. An heirloom variety was developed in 1945 by J.C. Walker of the University of Wisconsin, USA. United States Department of Agriculture, PI 303809. Disease Resistant: St, BER, EB. Indeterminate.



[TM462-20 - Wonder Light Tomato Seeds](#)

78 days. *Solanum lycopersicum*. Open Pollinated. Wonder Light Tomato. The plant produces excellent yields of 6 oz yellow tomatoes. They are very sweet and flavorful. These beautiful lemon shaped tomatoes are great for culinary creations. Also great for salads, salsas, tomato sauce, or wonderful yellow ketchup. An excellent choice for home gardens. An heirloom variety from Moscow, Russia. Indeterminate.



[TM142-20 - World's Smallest Tomato Seeds](#)

65 days. *Solanum lycopersicum*. Open Pollinated. World's Smallest Tomato. The early maturing plant produces heavy yields of tiny ¼ oz red tomatoes. They are very sweet and flavorful. Perfect for salads, garnishes, or culinary creations. Ten tomatoes will fit on a spoon! One of the smallest tomatoes in the world. Kids love them! An excellent choice for home gardens. Indeterminate.



[TM801-20 - Yaqui Tomato Seeds](#)

75 days. *Solanum lycopersicum*. (F1) Yaqui Tomato. The plant produces high yields of 3 to 4 oz red plum tomatoes. They are very sweet and flavorful. Perfect for salads, salsa, and making sauce, puree, and paste. This variety stands out for both quality and quantity. An excellent choice for home gardens and market growers. Disease Resistant: V, FF, N, A. Determinate.



[TM191-20 - Yellow Cherry Tomato](#)

70 days. *Solanum lycopersicum*. Open Pollinated. This early maturing plant produces high yields of yellow cherry tomatoes. They are very sweet and flavorful. Perfect for salads, snacks, and vegetable platters. An excellent choice for home gardens. United States Department of Agriculture, PI 647534. Indeterminate.



[TM718-10 - Yellow Oxheart Tomato](#)

86 days.
Solanum



lycopersicum. Open Pollinated. The plant produces excellent yields of 1 to 2 lb light yellow heart-shaped tomatoes. They are very sweet, meaty, juicy, and flavorful. Perfect for salads, slicing, and sandwiches. An excellent choice for home gardens. A 1915 heirloom variety from Willis, Virginia, USA. Indeterminate.

TM458-20 - Yellow Pear Cherry Tomato

78 days. *Solanum lycopersicum*. Open Pollinated. The plant produces high yields of ¾ to 1 oz yellow pear-shaped cherry tomatoes. They are mildly very sweet and flavorful. Perfect for salads, garnishes, or culinary creations. Grows in clusters. Low acidity variety. Crack Resistant. The plant requires support, either staking or cages. Excellent choice for home gardens. An heirloom variety dating back to the late 1800s. Disease Resistant: A. Indeterminate.



TM177-10 - Zapotec Tomato

86 days. *Solanum lycopersicum*. Open Pollinated. The plant produces excellent yields of 10 to 16 oz bright red tomatoes. They are very sweet and flavorful. Perfect for stuffing or for slicing to show off its scalloped edges. Also great for baking and grilling. It has a pleated shape that makes it very beautiful and ornamental. Excellent choice for home gardens. An heirloom variety from Zapotec Indians of Oaxaca, Mexico. Indeterminate.



TM574-10 - Zebra Cherry Tomato Seeds

60 days. *Solanum lycopersicum*. (F1) Zebra Cherry Tomato. This early maturing plant produces high yields of 1 oz bicolored dark red tomatoes with green stripes. They are very sweet and flavorful. Perfect fresh eating right off the vine or in salads. Suitable for container gardening, patios, hanging baskets, and small gardens where space is very limited. Excellent choice for home gardens. Disease Resistant: V, FF. Determinate.

